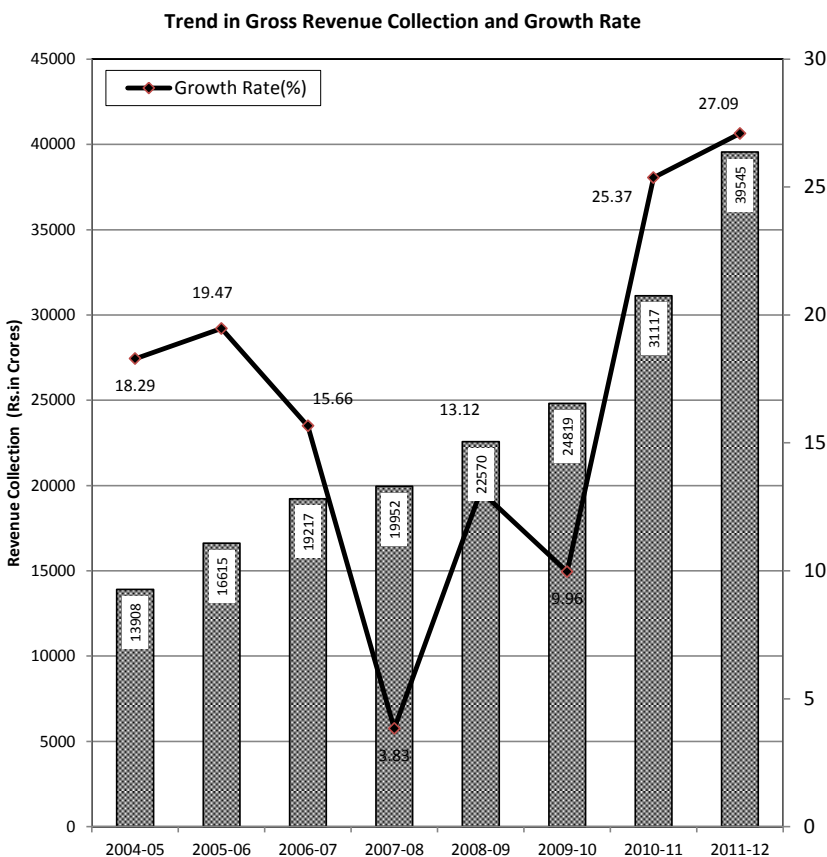




COMMERCIAL TAXES DEPARTMENT AT A GLANCE 2011-2012



COMMERCIAL TAXES DEPARTMENT

AT A GLANCE

2011-2012

compiled by
Statistics and Research Cell
Commercial Taxes Department
CHENNAI-600 005

PREFACE

The booklet titled "Commercial Taxes Department at a Glance 2011-2012" is an important official document of this Department. It contains details of major components of Commercial Taxes Department such as number of registered dealers, dealers filing monthly returns and dealers filing Annual returns, Act-wise revenue collection both at State and divisional level, trend in revenue, share of Commercial Taxes to GSDP and State's Own Tax Revenue, Performance of Territorial and Enforcement Units, etc.

Data for this booklet has been collected from the field level Offices of this Department. Particulars in respect of Gross State Domestic Product and State's Own Tax Revenue were collected from State Planning Commission and the Annual Financial Statement of Government of Tamil Nadu.

I would like to record my appreciation to Statistics & Research Cell for collection, compilation and publication of this booklet.

Ezhilagam,

Chennai:600 005,
Dated : 05.12.2012

Sd/-K.Manivasan
Commissioner of Commercial Taxes

I N D E X

Sl.No.	<u>CONTENT</u>	Table Number	Page No.
<u>PART-1</u>			
1	Acts Administered and Enforced by the Commercial Taxes Department	1	1
2	Target and Achievement	2	2
3	Receipts and Expenditure	3	2
4	Year - Wise Revenue Trend	4	3-4
5	Month - Wise Revenue Trend	5	5-6
6	Act - Wise Revenue	6	7
7	Act - Wise Revenue Trend - A Comparison	7	8
8	Act-wise % Share of Tax Revenue for the year 2011-12 (Pie Chart)	-	9
9	Value Added Tax and Non Value Added Tax Revenue and Growth Rate	8	10
10	Registered Dealers, monthly and Annual return filers	9	11
11	Share of Commercial Taxes Revenue to State's Own Tax Revenue	10	12
12	Trend in Gross State Domestic Product	11	13
13	Trend in Total Own Tax Revenue of the State	12	14
14	Sales Tax Revenue and Gross State Domestic Product	13	15
15	Taxable Turnover And Tax Revenue Details Of Top 100 Dealers	14	16-20
16	Taxable Turnover And Tax Revenue Details Of Top 100 Commodities taken from Top 100 dealers	15	21-25
17	Contribution of Top 100 Dealers and Commodities	16	26
18	Value Added Tax Revenue Collecton and Growth Rate	17	27
19	Non-Value Added Tax Revenue Collecton and Growth Rate	18	28
20	Revenue Collection and Growth Rate	19	29
21	Non-Value Added Tax Commodities Year-wise Revenue Collection	20	30
22	Month-wise and Act-wise Revenue Collection 2011-12	21	31
23	Year-wise and Act-wise Revenue Collection	22	32
24	Division - Wise Registered Dealers	23	33-34
25	Tax Revenue by Rate of Tax (VAT Goods) 2011-12	24	35
26	Revenue - Share	25	36

I N D E X

Sl.No.	<u>CONTENT</u>	Table Number	Page No.
<u>PART - II</u>			
27	Division - Wise Revenue Collection	26	37-38
28	Division-wise Revenue collections under all Acts 2011-12	27	39
29	Division-wise Revenue Receipts at a Glance	28	40-41
30	Commercial Taxes Districts/Zone-wise dealers filing monthly returns and Tax Revenue	29	42-44
31	Division-wise Distribution of VAT dealers filing monthly returns by Turnover Slabs 2011-12	30	45
32	Division-wise Distribution of Value Added Tax dealers filing Annual returns by Turnover Slabs 2010-11	31	46
33	Division-wise Distribution of Tax Revenue by Turnover Slabs 2011-12	32	47
34	Division-wise Distribution of Value Added Tax dealers filing monthly returns by Tax Slabs 2011-12	33	48
35	Division-wise Distribution of Tax Revenue by Tax Slabs 2011-12	34	49
36	Distribution of Value Added Tax dealers filing monthly returns by Turnover Slabs and Tax Slabs	35	50
37	Distribution of Tax Revenue by Turnover Slabs and Tax Slabs	36	51
38	Month-wise and Division-wise Revenue Collection 2011-12	37	52
39	Performance of Field Audit done by the Enforcement Wing 2011-12	38	53
40	Details of Surprise Inspection done by the Enforcement Wing 2011-12	39	54
41	Lorry Check at the Checkpost 2011-12	40	55
42	Lorry Check by the Roving Squad 2011-12	41	56
43	Sales Tax / Value Added Tax Revenue of Selected States	42	57
44	Division-wise No. of Commercial Taxes Districts/Zone and Assessment Circles 2011-12	43	58
45	Large Tax Payer's Unit (LTU)	44	59-60
46	Memorandum of Understanding (MoU) Cell	45	61-62
47	Check Posts	46	63-64
48	Jurisdiction of Territorial Wings	47	65-72
49	Territorial Divisions of Commercial Taxes Department	48	73-74
50	Jurisdiction of Enforcement Wings	49	75-76
51	Enforcement Wings of Commercial Taxes Department	50	77-78
52	Jurisdiction of Appeals	51	79-82
53	Hierarchy at State Headquarters (Flow Chart)	-	83
54	Pay Scales of Officers and Staff	52	84-85

COMMERCIAL TAXES
SELECTED INDICATORS 2011-2012

	Value Added Tax	Central Sales Tax
Registered Dealers (No.in Lakhs)	6.10	3.83
Dealers filing monthly returns(No.in Lakhs)	2.86	2.08
% of Dealers filing monthly returns to Regd. Dealers	47%	54%
TAX REVENUE		
	(Rs. in Crores)	
VAT GOODS		16760.61
NON-VAT GOODS		16948.41
VAT OTHERS		41.21
Central Sales Tax		2818.68
Entry Tax		2147.65
TN General Sales Tax		258.80
Luxury Tax		256.47
Entertainment Tax		59.43
Betting Tax		6.76
TDS		232.48
Enforcement collection		14.24
Total		39544.74
Refund (-)		823.57
Net Tax Revenue		38721.17
Total Own Tax Revenue of the State (Rs.in Crores)		59932.00
% share of Net Sales Tax to State's Own Tax Revenue		64.61
Total No. of Assessment Circles		323
Average No. of returns filed in a Circle per month		1531
Average Net Tax Revenue per Circle/Year		Rs. 119.88 Crores

**1. ACTS ADMINISTERED AND ENFORCED BY THE
COMMERCIAL TAXES DEPARTMENT - 2011-12**

SL.NO.	NAME OF ACT
1	Tamilnadu Value Added Tax Act 2006
2	Central Sales Tax Act 1956
3	Tamilnadu Tax on Entry of Motor Vehicles into Local Areas Act 1990
4	Tamilnadu General Sales Tax Act 1959
5	Tamilnadu Tax on Luxuries Act 1981
6	Tamilnadu Entertainment Tax Act 1939
7	Tamilnadu Betting Tax Act 1935
8	Tamilnadu Tax on Entry of Goods into Local Areas Act 2001
9	Tamilnadu Advertisements Tax Act 1983.
10	Tamilnadu Additional Sales Tax Act 1970

2. TARGET AND ACHIEVEMENT 2011-12

(Rs.in Crores)

YEAR	TARGET	REVENUE COLLECTION	ACHIEVEMENT (%)
1	2	3	4
2011-12	39753.00	39545.00	99.48

3. RECEIPTS AND EXPENDITURE

(Rs.In Crores)

Sl. No.	Head	2005-06	2006-07	2007-08	2008-09	2009-10	2010-11	2011-12
1	2	3	4	5	6	7	8	9
1	Receipts	16615	19217	19738	21918	24028	30491	38721
2	Expenditure	110.44	128.52	143.73	187.27	205.10	219.30	224.05
3	% of expenditure to receipts	0.66	0.67	0.73	0.85	0.85	0.72	0.58

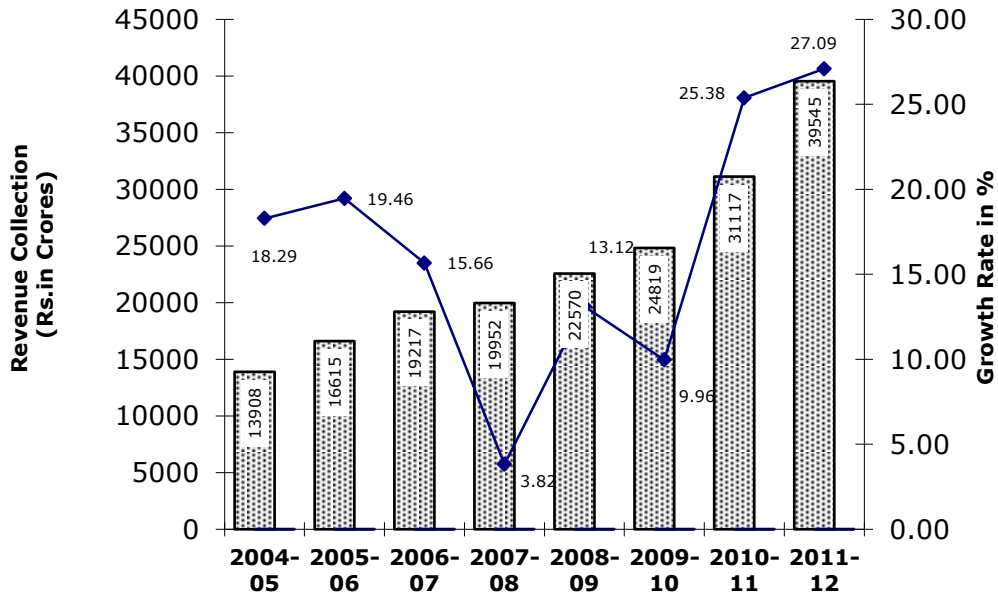
Note: Net Tax revenue from 2007-08.

4. YEAR-WISE GROSS AND NET REVENUE TREND

(Rs.in Crores)

Sl.No.	Year	Gross Revenue Collection	Growth Rate (in %)	Net Revenue Collection	Growth Rate (in %)
1	2	3	4	5	6
1	2004-05	13908	18.29	-	-
2	2005-06	16615	19.46	-	-
3	2006-07	19217	15.66	-	-
4	2007-08	19952	3.82	19738	-
5	2008-09	22570	13.12	21918	11.04
6	2009-10	24819	9.96	24029	9.63
7	2010-11	31117	25.38	30491	26.89
8	2011-12	39545	27.09	38721	26.99

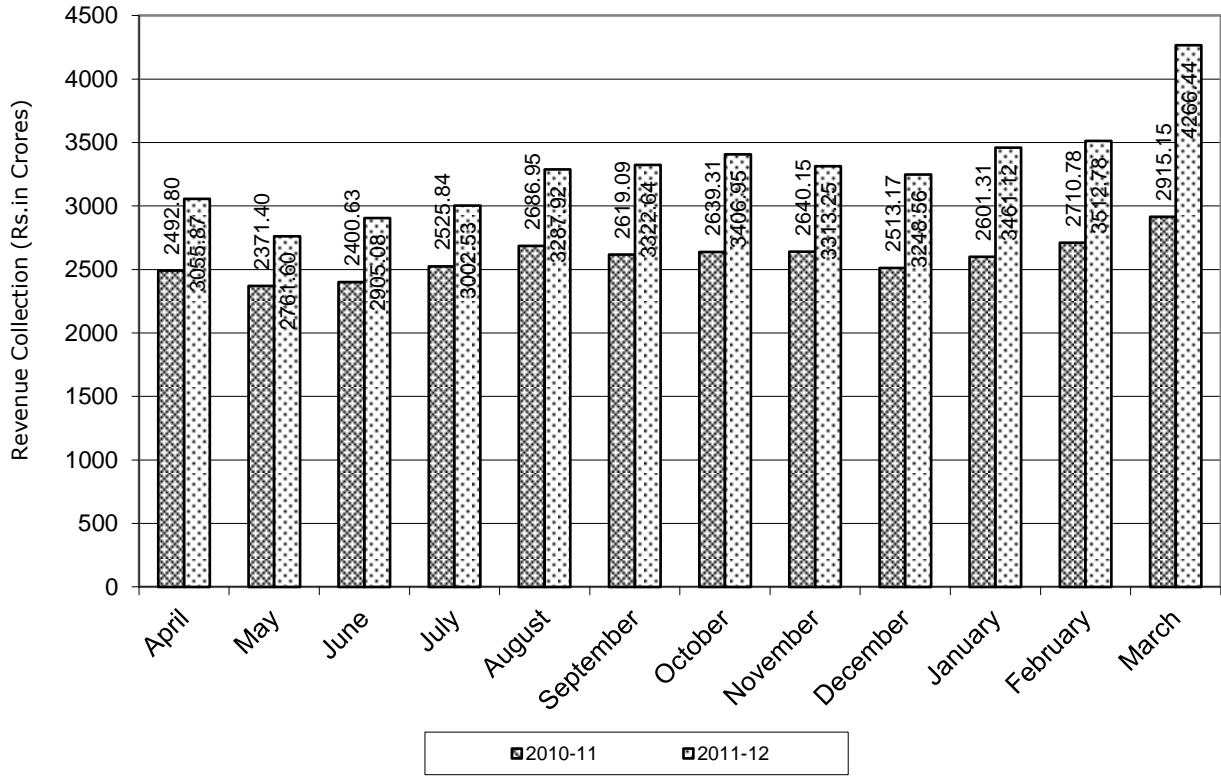
Trend in Gross Revenue Collection and Growth Rate



5. MONTH-WISE REVENUE TREND

Sl.No.	MONTH	Revenue Collection (Rs. In Crores)		Growth Rate (in %)
		2010-11	2011-12	
1	2	3	4	5
1	April	2492.80	3055.87	22.59
2	May	2371.40	2761.60	16.45
3	June	2400.63	2905.08	21.01
4	July	2525.84	3002.53	18.87
5	August	2686.95	3287.92	22.37
6	September	2619.09	3322.64	26.86
7	October	2639.31	3406.95	29.08
8	November	2640.15	3313.25	25.49
9	December	2513.17	3248.56	29.26
10	January	2601.31	3461.12	33.05
11	February	2710.78	3512.78	29.59
12	March	2915.15	4266.44	46.35
	Gross Revenue	31116.58	39544.74	27.09
	Refund	625.58	823.57	31.65
	Net Revenue	30491.00	38721.17	26.99

Month-wise Gross Revenue Trend 2010-11 and 2011-12



6. ACT- WISE REVENUE

(Rs.in Crores)

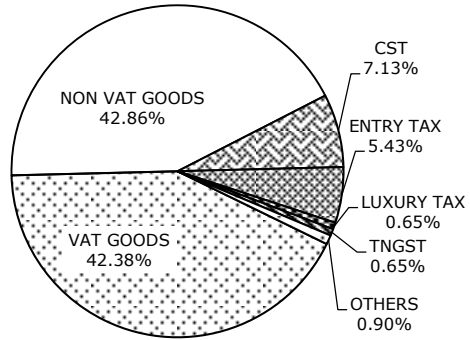
Sl. No.	ACTS	2007-08	GR	2008-09	GR	2009-10	GR	2010-11	GR	2011-12	GR
1	2	3	4	5	6	7	8	9	10	11	12
1	TN VAT*	16472	619.3	19440	18.0	21478	10.5	26558	23.7	33997	28.0
2	CST	1744	-14.2	1653	-5.2	1773	7.3	2263	27.6	2819	24.6
3	Entry Tax on Goods & Vehicles	1125	-14.7	996	-11.5	1162	16.7	1708	47.0	2148	25.8
4	TNGST	429	-96.8	293	-31.7	218	-25.6	350	60.6	259	-26.0
5	Luxury Tax	160	25.0	170	6.3	168	-1.2	216	28.6	256	18.5
6	Entertainment Tax	16	-36.0	12	-25.0	13	8.3	15	15.4	59	293.3
7	Betting Tax	6	0.0	6	0.0	7	16.7	6	-14.3	7	16.7
	Gross Revenue	19952	3.8	22570	13.1	24819	10.0	31116	25.4	39545	27.1
	Refund	214	0.0	652	204.7	791	21.3	626	-20.9	824	31.6
	Net Revenue	19738	2.7	21918	11.0	24028	9.6	30490	26.9	38721	27.0

* Includes TDS and Enf Collection

7. ACT- WISE REVENUE COLLECTION - A COMPARISON

Sl. No	Act	Revenue Collection (Rs. in Crores)		G.R. (%)
		2010-11	2011-12	
1	2	3	4	5
1	VAT			
	VAT-Goods	12561.82	16760.61	33.43
	NON-VAT-Goods	13794.71	16948.41	22.86
	Others	32.24	41.21	27.82
	VAT Sub Total	26388.77	33750.23	27.90
2	Central Sales Tax	2262.82	2818.68	24.56
3	Entry Tax			
	Entry -Goods	0.49	0.04	-91.84
	Entry -Vehicles	1707.08	2147.61	25.81
	Entry Tax-sub Total	1707.57	2147.65	25.77
4	TNGST			
	Sales Tax under TNGST	314.01	250.49	-20.23
	Additional sales Tax	6.55	0.86	-86.87
	Surcharge	1.62	2.97	83.33
	Additional Surcharge	0.17	0.00	-100.00
	others	27.16	3.52	-87.04
	Resale	0.19	0.40	110.53
	Surcharge u/s 3(1)	0.42	0.56	33.33
	TNGST Sub Total	350.12	258.80	-26.08
5	Luxury Tax	216.14	256.47	18.66
6	Entertainment Tax	15.41	59.43	285.66
7	Betting Tax	6.13	6.76	10.28
8	TDS Collection Chennai(E)	91.90	135.63	47.58
9	TDS Collection -AG.	77.72	96.85	24.61
10	Enf.Collection		14.24	
	Gross Revenue	31116.58	39544.74	27.09
	Refund	625.58	823.57	31.65
	Net Revenue	30491.00	38721.17	26.99

ACT-WISE % SHARE OF TAX REVENUE FOR THE YEAR 2011-12



Note: OTHERS includes VAT others, Entertainment Tax, Betting Tax and TDS Collection.

8. VAT AND NON VAT REVENUE AND GROWTH RATE

(Rs.in Crores)

Sl. No.	MONTH	VAT GOODS			NON VAT GOODS		
		2010-11	2011-12	GR	2010-11	2011-12	GR
1	2	3	4	5	6	7	8
1	April	996.57	1148.36	15.23	1100.73	1362.35	23.77
2	May	965.23	1144.74	18.60	1075.18	1226.00	14.03
3	June	943.14	1181.37	25.26	1137.82	1325.73	16.51
4	July	995.88	1268.85	27.41	1166.59	1295.07	11.01
5	August	1030.97	1369.69	32.85	1203.18	1442.79	19.91
6	September	1041.12	1412.60	35.68	1187.05	1462.35	23.19
7	October	1099.06	1464.77	33.27	1157.37	1450.66	25.34
8	November	1108.55	1406.44	26.87	1170.29	1461.63	24.89
9	December	1001.15	1369.61	36.80	1124.94	1394.77	23.99
10	January	1074.24	1497.71	39.42	1102.45	1449.25	31.46
11	February	1095.49	1537.78	40.37	1182.55	1457.11	23.22
12	March	1210.47	1958.69	61.81	1186.57	1620.70	36.59
Total		12561.87	16760.61	33.42	13794.72	16948.41	22.86

9. REGISTERED DEALERS, MONTHLY AND ANNUAL RETURN FILERS

(In No.)

SL.NO	Category	2005-06		2006-07		2007-08		2008-09		2009-10		2010-11		2011-12	
		No.	%	No.	%	No.	%	No.	%	No.	%	No.	%	No.	%
1	2	3	4	5	6	7	8	9	10	11	12	13	14	15	16
I	Tamil Nadu General Sales Tax/Value Added Tax														
1	Regd. Dealers	387527	100.0	399103	100.0	446251	100.0	496715	100.0	543203	100.0	580749	100.0	610241	100.0
2	Dealers Filing Monthly Returns	142601	36.8	151818	38.0	179714	40.3	205319	41.3	224168	41.3	237561	40.9	285912	46.9
3	Dealers filing Annual Returns	244926	63.2	247285	62.0	266537	59.7	291396	58.7	319035	58.7	343188	59.1	324329	53.1
4	Growth of Registered Dealers over previous year		0.8		3.0		11.8		11.3		9.4		6.9		5.1
II	Central Sales Tax														
1	Regd. Dealers	176056	100.0	176554	100.0	256872	100.0	307516	100.0	338396	100.0	350667	100.0	382825	100.0
2	Dealers Filing Monthly Returns	39669	22.5	46393	26.3	44360	17.3	39733	12.9	45991	13.6	73956	21.1	208362	54.4
3	Dealers filing Annual Returns	136387	77.5	130161	73.7	212512	82.7	267783	87.1	292405	86.4	276711	78.9	174463	45.6
4	Growth of Registered Dealers over previous year		-2.1		0.3		45.5		19.7		10.0		3.6		9.2

10.SHARE OF COMMERCIAL TAXES REVENUE TO STATE'S OWN TAX REVENUE

(Rs.in Crores)

Sl.No.	Heads	2007-08	2008-09	2009-10	2010-11	2011-12
1	2	3	4	5	6	7
1	Commercial Taxes Gross Revenue	19952	22570	24819	31117	39545
2	Commercial Taxes Net Revenue	19738	21918	24028	30491	38721
3	State's Own Tax Revenue *	29619	33684	36547	47782	59932
4	% Share of CT Net Revenue to State's own Tax Revenue	66.6	65.1	65.7	63.8	64.6

Source : *www.tn.gov.in/budget/budget_speech_e_2012-2013.pdf

Page.No.103

11.TREND IN GROSS STATE DOMESTIC PRODUCT

(Rs. In Crores)

Sl.No.	Year	GROSS STATE DOMESTIC PRODUCT at current prices	GR (%)
1	2	3	4
1	2004-05	219003	15.05
2	2005-06	257833	17.73
3	2006-07	310526	20.44
4	2007-08	350819	12.98
5	2008-09	401336	14.40
6	2009-10 _(RE)	479720	19.53
7	2010-11 _(QE)	566422	18.07
8	2011-12 _(AE)	639025	12.82

Source: GROSS STATE DOMESTIC PRODUCT Estimate Report P.No.3 from Dept. of Economics & Statistics RE-Revised Estimates, QE-Quick Estimates,AE-Advance Estimates,

12.TREND IN TOTAL OWN TAX REVENUE OF THE STATE

(Rs. In Crores)

Sl.No.	Year	TOTAL OWN TAX REVENUE OF THE STATE	GR (%)
1	2	3	4
1	2004-05	20167	21.97
2	2005-06	23774	17.89
3	2006-07	29106	22.43
4	2007-08	29619	1.76
5	2008-09	33684	13.72
6	2009-10	36547	8.50
7	2010-11(Accts)	47782	30.74
8	2011-12(RE)	59932	25.43

Source:www.tn.gov.in/budget/budget_speech_e_2012-2013.pdf Page.No.103

13.SALES TAX REVENUE AND GROSS STATE DOMESTIC PRODUCT

(Rs. In Crores)

Sl.No.	Year	Gross State Domestic Product at Current Prices	Gross Sales Tax Revenue	% of Gross Sales tax Revenue to Gross State Domestic Product	Net Sales Tax Revenue	% of Net Sales tax Revenue to Gross State Domestic Product
1	2	3	4	5	6	7
1	2004-05	219003	13908	6.35	-	-
2	2005-06	257833	16615	6.44	-	-
3	2006-07	310526	19217	6.19	-	-
4	2007-08	350819	19952	5.69	19738	5.63
5	2008-09	401336	22570	5.62	21918	5.46
6	2009-10(RE)	479720	24819	5.17	24028	5.01
7	2010-11(QE)	566422	31117	5.49	30491	5.38
8	2011-12(AE)	639025	39545	6.19	38721	6.06

Source: GROSS STATE DOMESTIC PRODUCT Estimate Report P.No.3
from Dept. of Economics & Statistics

14.TAXABLE TURNOVER AND TAX REVENUE DETAILS OF TOP 100 DEALERS

(Rs.in Crores)

Sl. No.	DEALER NAME	Taxable Turnover		G.R (%)	Tax Revenue		G.R (%)
		2010-11	2011-12		2010-11	2011-12	
1	2	3	4	5	6	7	8
1	INDIAN OIL CORPORATION	23079.74	28348.08	22.83	3389.18	4037.35	19.12
2	TASMAC	8175.07	9660.00	18.16	3101.22	3690.00	18.99
3	BHARAT PETROLEUM CORPORATION	11019.66	13113.63	19.00	2090.11	2521.21	20.63
4	HINDUSTAN PETROLEUM CORPORATION	8096.13	9824.09	21.34	1618.93	1833.39	13.25
5	CPCL	16665.55	21324.75	27.96	534.93	736.85	37.75
6	UNITED SPIRITS	1619.24	1218.33	-24.76	863.78	705.77	-18.29
7	ITC LIMITED	4248.80	4401.18	3.59	488.77	648.65	32.71
8	SNJ DISTILLERS	767.09	939.77	22.51	486.46	544.47	11.92
9	MIDAS GOLDEN DISTILLERIES	368.25	852.45	131.49	206.24	494.24	139.64
10	SHIVA DISTILLERIES LTD	795.15	745.99	-6.18	460.05	449.78	-2.23
11	ELTE DISTILLERIES	655.59	712.59	8.69	462.69	412.85	-10.77
12	KALS DISTILLERY PVT. LTD	75.03	711.48	848.26	327.16	412.47	26.08
13	EMPEE DISTILLERIES	482.69	594.21	23.10	263.65	344.45	30.65
14	MOHAN BREWERIES DISTILLIERIES	583.77	594.44	1.83	313.71	330.02	5.20
15	ASHOK LEYLAND	3264.26	4016.62	23.05	190.96	289.68	51.70
16	HINDUSTAN LEVER	2207.71	2541.59	15.12	214.83	275.51	28.25
17	SOUTHERN AGRIFURANE INDUSTRIIES(P) LTD.	451.89	452.65	0.17	256.34	261.84	2.15
18	THE INDIA CEMENTS	1331.50	1797.03	34.96	154.17	232.36	50.72
19	MADRAS CEMENT LTD	1587.51	1754.69	10.53	167.13	216.39	29.47
20	SAMSUNG INDIA ELEC.LTD	1896.45	1811.05	-4.50	96.99	201.98	108.25

(ctd...)

TAXABLE TURNOVER AND TAX REVENUE DETAILS OF TOP 100 DEALERS

Sl. No.	DEALER NAME	Taxable Turnover		G.R (%)	Tax Revenue		G.R (%)
		2010-11	2011-12		2010-11	2011-12	
1	2	3	4	5	6	7	8
21	DELL INDIA	4985.56	4787.72	-3.97	185.99	200.68	7.90
22	NOKIA INDIA	1308.57	4746.27	262.71	50.21	194.54	287.45
23	B.H.E.L	10916.94	12244.40	12.16	185.43	191.79	3.43
24	CHETTINADU CEMENT	1123.24	1631.51	45.25	138.53	191.60	38.31
25	DALMIA CEMENTS(AVINIJA)	516.66	1341.67	159.68	48.25	166.50	245.08
26	TATA MOTORS	665.58	1216.07	82.71	20.86	155.44	645.16
27	GOLDEN VATS	0.00	262.46	0.00	0.00	153.12	0.00
28	ULTRATECH CEMENT(P)LTD	774.83	1162.57	50.04	97.33	152.96	57.16
29	CHENNAI BEWERIES (P) LTD	0.00	255.54	0.00	0.00	144.69	0.00
30	MAHINDRA MAHINDRA	837.47	1483.05	77.09	66.15	137.66	108.10
31	L.G. ELECTRONICS INDIA	908.48	996.62	9.70	98.44	130.32	32.39
32	ASIAN PAINTS	855.13	1044.73	22.17	96.29	128.66	33.62
33	STEEL AUTHORITY OF INDIA	3031.71	3230.60	6.56	109.61	124.59	13.67
34	T V S MOTOR COMPANY	3408.55	3990.68	17.08	108.46	120.76	11.34
35	BRITANIA INDUSTRIES	749.34	909.39	21.36	90.30	120.54	33.49
36	MRF	1481.93	1932.46	30.40	88.38	119.93	35.70
37	EMPEE BREWERIES	177.84	207.50	16.68	102.53	119.29	16.35
38	MINERAL METAL TRADING CORPORATION	14782.75	11144.10	-24.61	147.87	111.47	-24.62
39	SCOTIA BANK	8164.39	11026.93	35.06	81.06	110.27	36.04
40	HYUNDAI MOTOR INDIA	13506.05	16544.79	22.50	72.22	107.33	48.62

(ctd...)

TAXABLE TURNOVER AND TAX REVENUE DETAILS OF TOP 100 DEALERS

Sl. No.	DEALER NAME	Taxable Turnover		G.R (%)	Tax Revenue		G.R (%)
		2010-11	2011-12		2010-11	2011-12	
1	2	3	4	5	6	7	8
41	TVL.PEPSICO INDIA HOLDING	756.55	1017.49	34.49	72.96	105.65	44.81
42	TATA STEEL	1856.18	2222.89	19.76	73.09	96.29	31.74
43	OIL NATURAL GAS COMMISSION	1402.40	1981.43	41.29	56.31	92.15	63.65
44	HYSKO STEEL	1672.11	2140.05	27.99	55.97	86.99	55.42
45	NESTLE INDIA	700.08	735.50	5.06	68.56	86.21	25.74
46	V.S.T. MOTORS	870.82	1183.40	35.89	61.20	85.60	39.87
47	GLAXO SMITHKLINE CONSUMER HEALTHCARE	579.53	645.17	11.33	68.75	83.84	21.95
48	LANSON MOTORS	409.01	533.27	30.38	49.74	76.60	54.00
49	TV SUNDRAM IYENGAR AND SONS LTD.	2749.04	3183.27	15.80	51.98	69.63	33.96
50	SONY INDIA	515.17	622.97	20.93	49.41	69.54	40.74
51	RASHTRIYA ISPAT NIGA LTD-VISAK STEEL	1202.09	1450.48	20.66	47.88	66.97	39.87
52	A B T LTD.	608.58	515.51	-15.29	73.38	65.79	-10.34
53	HINDUSTAN COCA - COLA BEVERAGES	515.96	583.97	13.18	51.78	64.51	24.58
54	RELIANCE INDUSTRIES	1275.38	1199.67	-5.94	113.08	64.37	-43.08
55	EXIDE INDUSTRIES	801.91	1032.86	28.80	41.81	63.74	52.45
56	AMWAY INDIA ENTERPRISES	339.77	452.49	33.18	37.72	59.90	58.80
57	GODREJ BOYCE MFG. CO	433.74	567.09	30.74	42.83	58.78	37.24
58	APOLLO TYRES	361.10	1201.25	232.66	29.70	57.19	92.56
59	WHIRLPOOL INDIA	369.60	414.63	12.18	45.27	56.23	24.21
60	ZUARI CEMENT	264.30	384.51	45.48	33.75	52.87	56.65

(ctd...)

TAXABLE TURNOVER AND TAX REVENUE DETAILS OF TOP 100 DEALERS

Sl. No.	DEALER NAME	Taxable Turnover		G.R (%)	Tax Revenue		G.R (%)
		2010-11	2011-12		2010-11	2011-12	
1	2	3	4	5	6	7	8
61	V.E. COMMERCIAL VEHIVLES	293.93	400.59	36.29	36.04	52.70	46.23
62	PHILIPS ELECTRONICS	371.33	412.37	11.05	42.84	52.68	22.97
63	CROMPTON GRAVES	363.86	420.22	15.49	40.98	52.52	28.16
64	RAIN CEMENT INDUSTRIES.	276.15	357.04	29.29	34.52	49.00	41.95
65	CADBURY INDIA	291.80	408.49	39.99	29.46	46.36	57.37
66	CBE. ANNAMALAI AGENCIES	261.84	325.81	24.43	31.89	44.95	40.95
67	E.I.D.PARRY (INDIA)	305.95	170.02	-44.43	25.00	43.91	75.64
68	ESSAR STEEL	600.83	906.01	50.79	22.95	41.95	82.79
69	PROCTOR & GAMBLE HOME PRODUCTS	218.05	308.45	41.46	26.76	41.73	55.94
70	VISTEON AUTOMOTIVE SYSTEMS	1181.31	1295.32	9.65	7.72	41.70	440.16
71	TUBE INVESTMENTS OF INDIA .,	1332.01	1689.31	26.82	29.95	41.09	37.20
72	PENNA CEMENT	271.61	295.19	8.68	33.92	40.69	19.96
73	NOKIA SIEMENS NETWORKS	1141.00	1850.63	62.19	23.63	39.30	66.31
74	CONCORDE MOTORS	267.24	278.12	4.07	32.47	37.96	16.91
75	REDINGTON INDIA	1112.34	1141.34	2.61	23.08	37.31	61.66
76	TITAN INDUSTRIES.	1242.27	1753.04	41.12	27.64	36.84	33.29
77	SNJ BREWERIES	0.00	63.69	0.00	0.00	36.09	0.00
78	AXIS BANK	2109.76	3490.88	65.46	21.11	35.59	68.59
79	COLGATE- PAL MOLIVE	230.27	265.87	15.46	28.00	35.29	26.04
80	CASTROL INDIA	260.45	312.12	19.84	26.92	35.23	30.87

(ctd...)

TAXABLE TURNOVER AND TAX REVENUE DETAILS OF TOP 100 DEALERS

Sl. No.	DEALER NAME	Taxable Turnover		G.R (%)	Tax Revenue		G.R (%)
		2010-11	2011-12		2010-11	2011-12	
1	2	3	4	5	6	7	8
81	J S W STEELS P. LTD.	901.83	1227.58	36.12	19.98	34.99	75.13
82	KYUNGSHIN INDUSTRIAL MOTHERSON	664.00	780.77	17.59	25.46	34.57	35.78
83	STERILITE INDUSTRIES (i) LTD.	955.55	1178.82	23.37	9.33	32.85	252.09
84	RAMANI CARS P LTD	112.69	238.33	111.49	14.95	32.85	119.73
85	JK TYRE INDUSTRIES	238.27	291.87	22.50	26.35	32.84	24.63
86	SHV LPG INDIA	302.61	453.70	49.93	20.96	32.45	54.82
87	JOHNSON JOHNSON	255.62	311.29	21.78	22.66	32.26	42.37
88	TVL.MAHINDRA NAVISTAR AUTOMOTIVES	156.60	224.42	43.31	19.66	31.32	59.31
89	SAKTHI SUGARS LTD.	217.75	316.02	45.13	28.14	31.23	10.98
90	SHELL INDIA MARKETS	164.08	190.51	16.11	26.84	31.12	15.95
91	PSL LIMITED	274.18	597.61	117.96	27.11	30.92	14.05
92	CHEMPLAST SANMAR LTD,	884.57	1189.18	34.44	20.71	30.79	48.67
93	HEWLETT - PACKARD INDIA	742.47	776.26	4.55	23.73	29.90	26.00
94	HDFC Bank Ltd.	946.03	2954.51	212.31	9.48	29.55	211.71
95	GODREJ CONSUMER PRODUCTS LTD.	136.16	339.95	149.67	13.40	28.99	116.34
96	LARSEN TOUBRO	1516.56	2193.56	44.64	29.22	28.43	-2.70
97	TAMILNADU CEMENT CORPORATION	298.08	218.92	-26.56	33.22	28.06	-15.53
98	SICAGEN INDIA	533.91	662.53	24.09	20.45	28.04	37.11
99	PREETHI KITCHEN APPLIANCES	159.93	244.37	52.80	15.05	27.86	85.12
100	THE ASSOCIATED CEMENT CO. (P) LTD	115.43	199.49	72.82	13.66	27.73	103.00
TOTAL		194957.74	238375.78	22.27	19565.62	24443.89	24.93

15. TAXABLE TURNOVER AND TAX REVENUE DETAILS OF TOP 100 COMMODITIES TAKEN FROM TOP 100 DEALERS

(Rs.in Crores)

Sl. No.	Name of the Commodity	Taxable Turnover		G.R (%)	Tax Revenue		G.R (%)
		2010-11	2011-12		2010-11	2011-12	
1	2	3	4	5	6	7	8
1	PETROLEUM PRODUCTS	61378.69	74710.44	21.72	7691.02	9237.19	20.10
2	IMFL & BEER	14517.58	17251.61	18.83	6750.35	8082.59	19.74
3	MOTOR VEHICLES (TWO/THREE/FOUR WHEELERS & SPARES)	50178.22	72895.00	45.27	1641.82	2538.85	54.64
4	CEMENT	7466.65	10110.67	35.41	848.57	1253.79	47.75
5	IRON & STEEL	18229.30	19172.23	5.17	498.94	656.23	31.52
6	TOBACCO PRODUCTS	3491.00	4464.77	27.89	454.81	650.63	43.06
7	WHITE GOODS	4085.45	4958.98	21.38	354.64	512.96	44.64
8	FMCG	3727.96	4597.59	23.33	340.64	457.95	34.44
9	GOLD BULLION JEWELLERY & SILVER ARTICLES	38272.10	53204.32	39.02	339.48	432.59	27.43
10	COMPUTERS	8432.01	7710.25	-8.56	265.21	308.41	16.29
11	TYRES & TUBES	3048.89	4558.21	49.50	204.83	289.37	41.27
12	ELECTRONICS	4765.89	2166.51	-54.54	149.57	229.49	53.43
13	PAINTS & VARNISHES	2071.08	2241.98	8.25	176.43	224.85	27.44
14	BOILER COMPONENTS	12077.50	13549.39	12.19	201.07	210.61	4.74
15	SUGARCANE & MOLASSES	1499.31	2415.95	61.14	115.34	201.09	74.35
16	CELL PHONE	1308.57	4804.52	267.16	50.21	198.10	294.54
17	FOOD & BEVERAGES	2131.92	2297.06	7.75	23.37	192.22	722.51
18	COTTON & COTTON WASTE	6549.73	6104.40	-6.80	156.42	183.93	17.59
19	SOFT DRINKS	1394.40	1614.64	15.79	135.09	171.88	27.23
20	ELECTRICALS	3905.69	3169.49	-18.85	240.50	155.91	-35.17

(ctd...)

TAXABLE TURNOVER AND TAX REVENUE DETAILS OF TOP 100 COMMODITIES TAKEN FROM TOP 100 DEALERS

Sl. No.	Name of the Commodity	Taxable Turnover		G.R (%)	Tax Revenue		G.R (%)
		2010-11	2011-12		2010-11	2011-12	
1	2	3	4	5	6	7	8
21	MACHINERY & SPARES	1447.81	2029.78	40.20	85.71	153.51	79.10
22	DRUGS & PHARMACEUTICALS	3010.17	2960.23	-1.66	129.09	136.27	5.56
23	BISCUITS & CAKES	834.35	1018.56	22.08	99.82	130.66	30.90
24	CERAMICS & SANITARYWARE	300.62	1290.89	329.41	26.03	120.87	364.35
25	BATTERIES	796.68	2096.98	163.21	28.90	105.43	264.81
26	CRUDE OIL & NATURAL GAS	1396.74	1981.43	41.86	56.06	92.15	64.38
27	LUBRICANT OIL	1195.07	1409.00	17.90	68.99	91.09	32.03
28	GLUCOSE LUCOZODE	579.53	645.17	11.33	67.52	83.84	24.17
29	CONFECTIONERY	168.01	600.55	257.45	18.67	70.55	277.88
30	TIMBER	1457.22	737.23	-49.41	89.10	68.15	-23.51
31	DYES	1628.89	2196.05	34.82	44.21	68.14	54.13
32	WORKS CONTRACT	443.69	2904.72	554.67	8.08	60.68	650.99
33	LPG	558.69	741.55	32.73	19.17	58.61	205.74
34	PAPER & PAPER PRODUCTS	1896.72	2107.91	11.13	45.78	52.50	14.68
35	CHEMICALS	2891.10	1805.70	-37.54	52.93	49.28	-6.90
36	EDIBLE OIL	1268.41	1826.49	44.00	8.10	49.11	506.30
37	EARTH MOVING EQUIPMENTS	332.81	1633.24	390.74	21.05	48.85	132.07
38	GLASS & MIRROR	1728.18	1506.63	-12.82	60.58	45.71	-24.55
39	AIRCONDITIONER	1106.01	445.54	-59.72	102.88	45.42	-55.85
40	GRANITES TILES & MARBLES	463.31	406.30	-12.30	40.32	42.15	4.54

(ctd...)

TAXABLE TURNOVER AND TAX REVENUE DETAILS OF TOP 100 COMMODITIES TAKEN FROM TOP 100 DEALERS

Sl. No.	Name of the Commodity	Taxable Turnover		G.R (%)	Tax Revenue		G.R (%)
		2010-11	2011-12		2010-11	2011-12	
1	2	3	4	5	6	7	8
41	HEALTHCARE PRODUCTS	242.63	308.45	27.13	29.65	41.73	40.74
42	CYCLES & SPARES	1534.17	1695.20	10.50	35.65	41.31	15.88
43	TRUCK CHASIS	329.29	576.49	75.07	17.34	41.21	137.66
44	WATCHES & ACCESSORIES	1265.04	1777.70	40.53	30.33	40.20	32.54
45	TELECOM & NETWORK EQUIPMENTS	1143.22	1854.98	62.26	23.73	39.39	65.99
46	STEEL PIPES	446.43	832.80	86.55	15.00	36.18	141.20
47	TEXTILES	759.85	951.66	25.24	23.98	35.79	49.25
48	ALU.WIRE & RODS	230.60	780.77	238.58	9.65	34.57	258.24
49	TRACTOR & ACCESSORIES	340.31	408.98	20.18	27.44	33.80	23.18
50	CONCRETE MIXER	694.21	779.43	12.28	22.64	31.64	39.75
51	WHEAT PRODUCTS	1044.03	761.85	-27.03	31.78	31.63	-0.47
52	COMPUTER PERIPHERALS	496.22	593.48	19.60	17.90	27.58	54.08
53	READYMADE GARMENTS	3025.15	548.48	-81.87	64.12	26.26	-59.05
54	CABLES & WIRES	206.98	295.34	42.69	19.33	26.03	34.66
55	TEXTILE MACHINERY	1802.71	2189.44	21.45	22.51	25.88	14.97
56	CEMENT SHEETS	215.57	271.83	26.10	17.69	25.45	43.87
57	INGOTS	702.56	874.02	24.41	18.51	24.81	34.04
58	FANS	206.43	202.13	-2.08	23.32	24.70	5.92
59	HERBAL PRODUCTS	71.89	174.42	142.62	8.99	23.84	165.18
60	TURBINES	398.94	740.87	85.71	14.16	23.75	67.73

(ctd...)

TAXABLE TURNOVER AND TAX REVENUE DETAILS OF TOP 100 COMMODITIES TAKEN FROM TOP 100 DEALERS

Sl. No.	Name of the Commodity	Taxable Turnover		G.R (%)	Tax Revenue		G.R (%)
		2010-11	2011-12		2010-11	2011-12	
1	2	3	4	5	6	7	8
61	LEATHERS	313.12	304.14	-2.87	18.65	23.32	25.04
62	ADHESIVES	185.55	198.23	6.83	17.37	23.04	32.64
63	AIR BRAKES	519.61	615.04	18.37	12.00	21.45	78.75
64	LIGNITE	432.73	479.06	10.71	16.34	21.08	29.01
65	DIESEL & FUEL INJECTION	1059.13	230.23	-78.26	27.18	21.02	-22.66
66	PRESSURE COOKERS	181.79	261.95	44.09	11.19	20.14	79.98
67	PVC PIPES	387.98	447.46	15.33	14.72	20.02	36.01
68	BEARINGS	487.50	559.46	14.76	15.57	18.45	18.50
69	STEEL SHEETS	653.81	904.75	38.38	8.84	17.85	101.92
70	COAL	463.27	440.80	-4.85	15.43	17.70	14.71
71	MASALA POWDER	350.61	504.87	44.00	10.65	17.39	63.29
72	MEDICAL EQUIPMENTS	532.57	645.48	21.20	13.12	16.50	25.76
73	MOSQUITO COILS	176.46	191.01	8.25	12.96	16.09	24.15
74	DAIRY PRODUCTS	840.86	219.84	-73.86	79.03	14.79	-81.29
75	WATER FILTER	97.06	108.01	11.28	11.35	14.71	29.60
76	TRUCKER	776.45	1211.47	56.03	9.58	14.23	48.54
77	STEEL TUBES	484.01	527.94	9.08	9.20	13.78	49.78
78	COSMETICS	2871.12	130.06	-95.47	291.91	13.69	-95.31
79	HOISERY GARMENTS	903.54	785.68	-13.04	14.68	13.60	-7.36
80	TELEPHONE CABLES	99.05	127.30	28.52	3.78	13.51	257.41

(ctd...)

TAXABLE TURNOVER AND TAX REVENUE DETAILS OF TOP 100 COMMODITIES TAKEN FROM TOP 100 DEALERS

Sl. No.	Name of the Commodity	Taxable Turnover		G.R (%)	Tax Revenue		G.R (%)
		2010-11	2011-12		2010-11	2011-12	
1	2	3	4	5	6	7	8
81	GUN & RIFLES	78.43	109.22	39.26	7.39	13.44	81.87
82	IRON CASTING	648.35	889.50	37.19	8.73	12.46	42.73
83	FERTILIZERS & PESTICIDES	1865.10	337.09	-81.93	62.95	12.20	-80.62
84	FIRE WORKS	593.64	303.42	-48.89	23.57	12.12	-48.58
85	FOAM MATTRESS & PILLOWS	61.35	85.42	39.23	7.22	11.15	54.43
86	WIND MILL	150.27	399.41	165.79	4.36	10.85	148.85
87	BOLT & NUTS	1031.51	1387.63	34.52	10.22	10.73	4.99
88	BRAKE SHOES	1364.70	1622.80	18.91	13.65	10.67	-21.83
89	HARDWARES	181.48	158.33	-12.76	9.44	10.59	12.18
90	ABRASIVES	537.74	630.05	17.17	9.28	10.57	13.90
91	TEA	218.32	226.87	3.92	8.18	10.20	24.69
92	GASKET OIL TANKERS	46.26	87.12	88.33	5.13	10.17	98.25
93	PLASTIC PRODUCTS	687.82	435.65	-36.66	19.41	10.07	-48.12
94	RUBBER PRODUCTS	716.15	439.78	-38.59	17.71	10.05	-43.25
95	DISPLAY BOARDS & PANEL ITE	140.67	96.43	-31.45	7.56	9.53	26.06
96	MOTOR PUMPS	751.15	469.11	-37.55	13.44	9.40	-30.06
97	FITNESS EQUIPMENT	39.83	69.97	75.67	4.46	9.21	106.50
98	DUM TIPPER	224.69	259.88	15.66	8.30	9.11	9.76
99	HIGH SPEED DIESEL OIL	389.56	725.93	86.35	6.37	9.05	42.07
100	MACHINE TOOLS	242.23	305.58	26.15	5.16	8.70	68.60
	TOTAL	308977.65	376892.25	21.98	23051.10	28959.99	25.63

16. CONTRIBUTION OF TOP 100 DEALERS AND COMMODITIES

(Rs.in Crores)

SL.No.	DESCRIPTION	2010-11	2011-12	% of Share to total revenue*	
				2010-11	2011-12
1	2	3	4	5	6
1	Total Revenue*	30359.16	38716.56	100.00	100.00
2	Share of Top 100 Dealers	19565.62	24443.89	64.45	63.14
3	Share of Top 100 Commodities	23051.10	28959.99	75.93	74.80

(*Excluding Luxury Tax, Entertainment Tax, Betting Tax,T.N.G.S.T., Enft. and T.D.S)

17. REVENUE COLLECTION FROM VAT GOODS AND GROWTH RATE

(Rs in Crores)

Sl. No.	Month	2008-09	2009-10	GR (%)	2009-10	2010-11	GR (%)	2010-11	2011-12	GR (%)
1	2	3	4	5	6	7	8	9	10	11
1	April	758.36	792.25	4.5	792.25	996.57	25.8	996.57	1148.36	15.2
2	May	720.68	781.37	8.4	781.37	965.23	23.5	965.23	1144.74	18.6
3	June	742.94	771.97	3.9	771.97	943.14	22.2	943.14	1181.37	25.3
4	July	752.61	799.53	6.2	799.53	995.88	24.6	995.88	1268.85	27.4
5	August	782.95	829.51	5.9	829.51	1030.97	24.3	1030.97	1369.69	32.9
6	Septem.	811.82	854.64	5.3	854.64	1041.12	21.8	1041.12	1412.60	35.7
7	October	814.14	873.32	7.3	873.32	1099.06	25.8	1099.06	1464.77	33.3
8	November	785.70	889.76	13.2	889.76	1108.55	24.6	1108.55	1406.44	26.9
9	December	706.42	799.28	13.1	799.28	1001.15	25.3	1001.15	1369.61	36.8
10	January	702.21	875.17	24.6	875.17	1074.24	22.7	1074.24	1497.71	39.4
11	February	694.12	876.97	26.3	876.97	1095.49	24.9	1095.49	1537.78	40.4
12	March	766.15	999.01	30.4	999.01	1210.47	21.2	1210.47	1958.69	61.8
Total		9038.10	10142.78	12.2	10142.78	12561.87	23.9	12561.87	16760.61	33.4

18. REVENUE COLLECTION FROM NON-VAT GOODS AND GROWTH RATE

(Rs in Crores)

Sl. No.	Month	2008-09	2009-10	GR (%)	2009-10	2010-11	GR (%)	2010-11	2011-12	GR (%)
1	2	3	4	5	6	7	8	9	10	11
1	April	779.47	913.25	17.2	913.25	1100.73	20.5	1100.73	1362.35	23.8
2	May	816.81	869.81	6.5	869.81	1075.18	23.6	1075.18	1226.00	14.0
3	June	875.98	893.68	2.0	893.68	1137.82	27.3	1137.82	1325.73	16.5
4	July	865.21	904.20	4.5	904.20	1166.59	29.0	1166.59	1295.07	11.0
5	August	903.66	939.00	3.9	939.00	1203.18	28.1	1203.18	1442.79	19.9
6	Septem.	894.09	978.55	9.4	978.55	1187.05	21.3	1187.05	1462.35	23.2
7	October	897.09	974.82	8.7	974.82	1157.37	18.7	1157.37	1450.66	25.3
8	November	884.66	999.10	12.9	999.10	1170.29	17.1	1170.29	1461.63	24.9
9	December	786.04	862.47	9.7	862.47	1124.94	30.4	1124.94	1394.77	24.0
10	January	840.83	888.48	5.7	888.48	1102.45	24.1	1102.45	1449.25	31.5
11	February	894.12	966.99	8.1	966.99	1182.55	22.3	1182.55	1457.11	23.2
12	March	811.99	985.28	21.3	985.28	1186.57	20.4	1186.57	1620.70	36.6
Total		10249.95	11175.63	9.0	11175.63	13794.72	23.4	13794.72	16948.41	22.9

19.REVENUE COLLECTION AND GROWTH RATE UNDER ALL ACTS (2007-08 TO 2011-12)

(Rs. in Crores)													
Sl. No.	MONTH	2007-08	2008-09	GR (%)	2008-09	2009-10	GR (%)	2009-10	2010-11	GR (%)	2010-11	2011-12	GR (%)
1	2	3	4	5	6	7	8	9	10	11	12	13	14
1	April	1615.75	1902.00	17.7	1902.00	2005.24	5.4	2005.24	2492.80	24.3	2492.80	3055.87	22.6
2	May	1531.82	1803.79	17.8	1803.79	1894.25	5.0	1894.25	2371.40	25.2	2371.40	2761.60	16.5
3	June	1614.67	1903.62	17.9	1903.62	1906.25	0.1	1906.25	2400.63	25.9	2400.63	2905.08	21.0
4	July	1652.28	1908.06	15.5	1908.06	1958.18	2.6	1958.18	2525.84	29.0	2525.84	3002.53	18.9
5	August	1654.12	1941.61	17.4	1941.61	2033.65	4.7	2033.65	2686.96	32.1	2686.96	3287.92	22.4
6	Septem.	1665.51	1963.01	17.9	1963.01	2103.80	7.2	2103.80	2619.08	24.5	2619.08	3322.64	26.9
7	October	1727.50	2048.58	18.6	2048.58	2166.92	5.8	2166.92	2639.31	21.8	2639.31	3406.95	29.1
8	Novem.	1614.74	1895.96	17.4	1895.96	2162.90	14.1	2162.90	2640.15	22.1	2640.15	3313.25	25.5
9	Dece.	1601.24	1702.07	6.3	1702.07	1935.74	13.7	1935.74	2513.17	29.8	2513.17	3248.56	29.3
10	January	1701.45	1775.79	4.4	1775.79	2092.46	17.8	2092.46	2601.31	24.3	2601.31	3461.12	33.1
11	Febr.	1690.17	1815.37	7.4	1815.37	2176.57	19.9	2176.57	2710.78	24.5	2710.78	3512.78	29.6
12	March	1883.34	1910.26	1.4	1910.26	2382.88	24.7	2382.88	2915.15	22.3	2915.15	4266.44	46.4
	Gross Revenue	19952.59	22570.12	13.1	22570.12	24818.84	10.0	24818.84	31116.58	25.4	31116.58	39544.74	27.1
	Refund	214.55	652.15	204.0	652.15	790.30	21.2	790.30	625.58	-20.8	625.58	823.57	31.6
	Net Revenue	19738.04	21917.97	11.0	21917.97	24028.54	9.6	24028.54	30491.00	26.9	30491.00	38721.17	27.0

20. REVENUE FROM NON-VAT COMMODITIES

(Rs.In Crores)

Sl. No.	Name of the Commodity	2001-02	2002-03	2003-04	2004-05	2005-06	2006-07	2007-08	2008-09	2009-10	2010-11	2011-12
1	2	3	4	5	6	7	8	9	10	11	12	13
I	IMFL PRODUCTS											
	IMFL -VI Schedule	1584.82	1695.25	1897.71	2172.94	2842.50	3498.94	4035.94	4811.65	5458.46	6746.00	8179.75
	Foreign Liquor	4.03	5.48	4.98	5.02	5.49	8.29	11.26	129.81	284.26	104.99	89.07
	Sub - Total	1588.85	1700.73	1902.68	2177.96	2847.99	3507.23	4047.20	4941.46	5742.73	6850.99	8268.82
II	PETROLEUM PRODUCTS											
	High Speed Diesel	1265.67	1389.88	1636.44	2050.94	2395.63	2664.89	2780.36	3246.14	3394.88	4264.61	4935.68
	Petrol	592.04	686.97	805.14	955.36	1141.01	1343.56	1462.05	1744.35	1802.23	2391.43	2871.83
	White Kerosene (Superior Kerosene Oil)	0.00	0.00	24.06	35.46	29.95	28.61	8.33	2.69	7.75	6.90	1.00
	Light Diesel Oil	7.07	11.88	12.98	11.25	12.05	14.68	8.58	7.67	3.01	4.07	15.52
	Aviation Gasoline	6.19	5.78	2.48	5.91	4.17	4.52	0.11	0.13	0.29	0.39	0.27
	Aviation Turbine Fuel	90.50	80.33	59.30	86.21	104.62	157.55	170.62	154.60	109.12	160.98	251.88
	Sub - Total	1961.48	2174.83	2540.40	3145.12	3687.44	4213.80	4430.04	5155.59	5317.27	6828.38	8076.18
III	SugarCane	117.98	127.46	112.42	64.29	115.48	170.86	182.09	134.15	100.07	82.91	175.80
	Molasses	11.77	10.94	14.61	22.64	19.39	13.93	8.85	18.76	15.56	32.43	22.01
	Tobacco Products	0.00	0.00	0.00	0.00	0.00	0.00	0.00	0.00	0.00	0.00	405.60
	Sub - Total	129.74	138.40	127.04	86.93	134.87	184.79	190.94	152.91	115.63	115.34	603.41
	Grand Total	3680.08	4013.96	4570.12	5410.01	6670.31	7905.82	8668.18	10249.95	11175.63	13794.71	16948.41

21.Month-wise and Act-wise Revenue Collection 2011-12

(Rs.in Crores)

Sl. No.	Act	Apr	May	Jun	Jul	Aug	Sep	Oct	Nov	Dec	Jan	Feb	Mar	TOTAL
1	2	3	4	5	6	7	8	9	10	11	12	13	14	15
1	Value Added Tax.													
	VAT-Goods	1148.36	1144.74	1181.37	1268.85	1369.69	1412.60	1464.77	1406.44	1369.61	1497.71	1537.78	1958.69	16760.61
	NON VAT-Goods	1362.35	1226.00	1325.73	1295.07	1442.79	1462.35	1450.66	1461.63	1394.77	1449.25	1457.11	1620.70	16948.41
	Others	1.36	0.63	1.06	0.74	1.95	2.52	3.36	4.26	4.44	4.68	5.05	11.16	41.21
	VAT-Total	2512.07	2371.37	2508.16	2564.66	2814.43	2877.47	2918.79	2872.33	2768.82	2951.64	2999.94	3590.55	33750.23
2	Central Sales Tax	289.17	176.51	189.14	210.18	223.74	214.48	245.40	220.32	248.96	255.61	240.66	304.51	2818.68
3	Entry Tax.													
	Entry Tax - Goods	0.01	0.00	0.00	0.03	0.00	0.00	0.00	0.00	0.00	0.00	0.00	0.00	0.04
	Entry Tax - Vehicles	190.29	148.11	153.49	169.89	192.64	177.62	178.25	148.53	154.87	181.87	206.90	245.15	2147.61
	Entry Tax - Total	190.30	148.11	153.49	169.92	192.64	177.62	178.25	148.53	154.87	181.87	206.90	245.15	2147.65
4	TNGST.													
	Sales Tax	27.78	11.79	11.67	12.30	13.95	13.04	20.08	19.52	25.04	26.82	27.77	40.73	250.49
	Add.Sales Tax	0.06	0.00	0.03	0.04	0.02	0.02	0.03	0.17	0.04	0.03	0.12	0.30	0.86
	Surcharge	0.00	0.01	0.01	0.00	0.01	0.16	0.03	0.17	0.17	0.29	0.99	1.13	2.97
	Addl.Surcharge	0.00	0.00	0.00	0.00	0.00	0.00	0.00	0.00	0.00	0.00	0.00	0.00	0.00
	Others	0.03	0.13	0.35	0.29	0.02	0.20	0.18	0.17	0.36	0.44	0.35	1.00	3.52
	Resale	0.00	0.00	0.01	0.00	0.28	0.00	0.06	0.00	0.00	0.03	0.02	0.00	0.40
	Surcharge U/S 3(i)	0.14	0.14	0.15	0.03	0.00	0.00	0.00	0.00	0.00	0.00	0.00	0.10	0.56
	TNGST - Sub Total	28.01	12.07	12.22	12.66	14.28	13.42	20.38	20.03	25.61	27.61	29.25	43.26	258.80
5	Luxury Tax	20.62	19.71	21.70	19.90	21.13	19.98	19.89	20.85	21.93	22.72	22.04	26.00	256.47
6	Entertainment Tax	1.04	1.62	2.54	4.46	3.18	4.41	4.66	12.68	9.59	5.32	2.56	7.37	59.43
7	Betting Tax	0.55	0.41	0.30	0.44	0.58	0.65	0.57	0.61	0.57	0.74	0.70	0.64	6.76
8	TDS-Chennai(E)	13.66	6.64	8.18	14.42	11.99	9.43	11.42	10.06	12.25	14.10	9.08	14.40	135.63
9	TDS-A.G.	0.00	24.15	8.78	4.91	5.22	4.51	6.93	6.62	4.88	0.00	0.00	30.85	96.85
10	Enf.Collection	0.45	1.01	0.57	0.98	0.73	0.67	0.66	1.22	1.08	1.51	1.65	3.71	14.24
	Gross Revenue	3055.87	2761.60	2905.08	3002.53	3287.92	3322.64	3406.95	3313.25	3248.56	3461.12	3512.78	4266.44	39544.74

22.Year-wise and Act-wise Revenue Collection

(Rs.In Crores)

Sl. NO.	ACT	2001-02	2002-03	2003-04	2004-05	2005-06	2006-07	2007-08	2008-09	2009-10	2010-11	2011-12
1	2	4	5	6	7	8	9	10	11	12	13	14
1	Value Added Tax.*											
	VAT Goods	0.00	0.00	0.00	0.00	0.00	1013.23	7790.51	9038.10	10142.78	12561.87	16760.61
	NON VAT-Goods	0.00	0.00	0.00	0.00	0.00	1275.70	8668.18	10249.95	11175.63	13794.71	16948.41
	Others	0.00	0.00	0.00	0.00	0.00	0.96	13.79	16.73	17.11	32.18	41.21
	VAT-SUB TOTAL	0.00	0.00	0.00	0.00	0.00	2289.89	16472.48	19304.78	21335.52	26388.76	33750.23
2	Central Sales Tax	903.72	981.81	1185.89	1495.22	1799.24	2033.44	1743.41	1653.03	1772.65	2262.81	2818.68
3	Entry Tax											
	Entry Tax - Goods	0.00	228.77	249.02	288.56	360.23	476.30	73.99	8.90	0.59	0.49	0.04
	Entry Tax - Vehicles	296.66	324.01	388.91	519.21	655.67	842.13	1051.36	987.40	1161.89	1707.08	2147.61
	Entry Tax - Total	296.66	552.78	637.93	807.77	1015.90	1318.43	1125.35	996.30	1162.48	1707.57	2147.65
4	TNGST											
	Sales Tax	6752.76	7490.41	8605.50	10053.04	11899.67	11723.51	300.89	258.80	206.24	314.00	250.49
	Add.Sales Tax	750.52	658.66	708.14	834.07	1057.63	999.06	9.04	5.26	2.32	6.56	0.86
	Surcharge	0.88		0.32	0.10	0.02	0.00	0.02	0.00	0.16	1.62	2.97
	Addl.Surcharge	0.04	0.12	0.00	0.04	0.11	0.06	0.00	0.01	0.05	0.17	0.00
	Others	28.23	50.12	39.27	40.16	52.36	71.97	15.86	26.62	8.09	27.17	3.52
	Resale	0.00	143.32	244.63	286.00	345.67	329.78	1.89	0.69	0.71	0.19	0.40
	Surcharge U/S 3(i)	0.00	155.36	169.55	207.67	241.36	222.84	1.29	1.07	0.10	0.42	0.56
	TNGST - Sub Total	7532.43	8497.99	9767.41	11421.08	13596.82	13347.22	328.99	292.45	217.67	350.13	258.80
5	Luxury Tax	89.03	81.99	62.61	77.80	92.62	128.24	159.73	170.15	168.47	216.13	256.47
6	Entertainment Tax	68.31	71.19	75.07	59.09	43.65	24.90	16.35	12.24	13.18	15.41	59.43
7	Betting Tax	5.60	5.22	5.39	5.65	6.11	6.40	6.35	6.12	6.87	6.13	6.76
8	TDS -AG	8.93	8.28	14.53	23.73	35.68	25.03	42.09	68.13	65.80	91.90	96.85
9	TDS -EAST	0.00	0.00	8.09	17.05	25.29	43.66	57.84	66.92	76.20	77.72	135.63
10	Enf.Collection											14.24
	Gross Revenue	8904.68	10199.26	11756.92	13907.39	16615.31	19217.21	19952.59	22570.12	24818.84	31116.56	39544.74
	Refund							214.55	652.15	790.30	625.56	823.57
	Net Revenue							19738.04	21917.97	24028.54	30491.00	38721.17

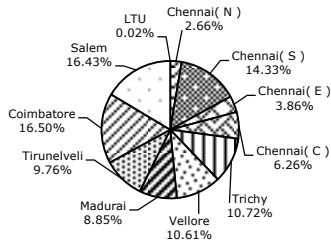
*VAT introduced from 01.01.2007

23. DIVISION - WISE REGISTERED DEALERS - 2011-12

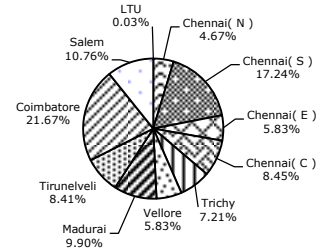
(In No.)

SL. NO.	Category	LTU	Chennai (N)	Chennai (S)	Chennai (E)	Chennai (C)	Trichy	Vellore	Madurai	Tirun- elveli	Coim- batore	Salem	STATE
1	2	3	4	5	6	7	8	9	10	11	12	13	14
I	VALUE ADDED TAX												
1	Regd. Dealers	100	16228	87470	23545	38231	65417	64771	53991	59561	100682	100245	610241
2	Dealers Filing Monthly Returns	100	13341	49288	16666	24151	20616	16677	28291	24059	61947	30776	285912
3	Dealers filing Annual Returns	0	2887	38182	6879	14080	44801	48094	25700	35502	38735	69469	324329
4	% of dealers filing monthly returns to State	0.03	4.67	17.24	5.83	8.45	7.21	5.83	9.90	8.41	21.67	10.76	100.00
5	% of dealers filing monthly returns to Regd. dealers	100.00	82.21	56.35	70.78	63.17	31.51	25.75	52.40	40.39	61.53	30.70	46.85
II	CENTRAL SALES TAX												
1	Regd. Dealers	100	14007	58753	19007	30343	25366	30001	25451	34279	86000	59518	382825
2	Dealers Filing Monthly Returns	100	12160	36556	13950	19719	10085	8719	15564	15873	54956	20680	208362
3	Dealers filing Annual Returns	0	1847	22197	5057	10624	15281	21282	9887	18406	31044	38838	174463
4	% of dealers filing monthly returns to State	0.05	5.84	17.54	6.70	9.46	4.84	4.18	7.47	7.62	26.38	9.93	100.00
5	% of dealers filing monthly returns to Regd Dealers	100.00	86.81	62.22	73.39	64.99	39.76	29.06	61.15	46.31	63.90	34.75	54.43

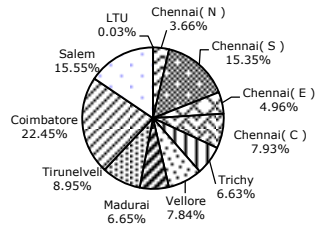
Division-wise Share of VAT Registered Dealers



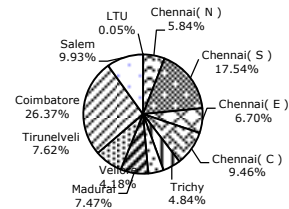
Division-wise Share of VAT Dealers filing Monthly Returns



Division-wise Share of CST Registered Dealers



Division-wise Share of CST Dealers filing Monthly Returns



24. Tax Revenue by Rate of Tax (VAT GOODS) 2011-12

(Rs in Crores)

Sl. No.	DIVISION	Rate of Tax (VALUE ADDED TAX Goods)						TOTAL
		1%	2%	4%	5%	12.50%	14.50%	
1	2	3	4	5	6	7	8	9
1	LTU	140.09	0.26	212.53	898.20	1040.28	2836.48	5127.84
2	Chennai (N)	44.26	0.59	59.28	188.55	42.68	246.11	581.47
3	Chennai (S)	0.15	8.99	174.96	778.28	251.31	1364.04	2577.73
4	Chennai (E)	84.65	5.85	87.33	396.68	148.83	634.78	1358.12
5	Chennai (C)	69.54	15.79	124.46	443.25	289.53	1202.35	2144.92
6	Trichy	8.63	1.47	20.30	93.31	113.22	504.09	741.02
7	Vellore	2.33	0.76	13.90	50.40	68.63	305.98	442.00
8	Madurai	11.47	1.48	37.08	138.65	68.30	246.15	503.13
9	Tirunelveli	5.63	2.34	24.41	115.59	113.01	522.99	783.97
10	Coimbatore	141.48	4.83	53.48	245.20	187.78	884.56	1517.33
11	Salem	4.76	2.50	88.32	322.04	114.00	451.46	983.08
TOTAL		512.99	44.86	896.05	3670.15	2437.57	9198.99	16760.61
Share of Revenue across Rate of Tax		3.06	0.27	5.35	21.90	14.54	54.88	100.00

25.REVENUE - SHARE**(Rs in Crores)**

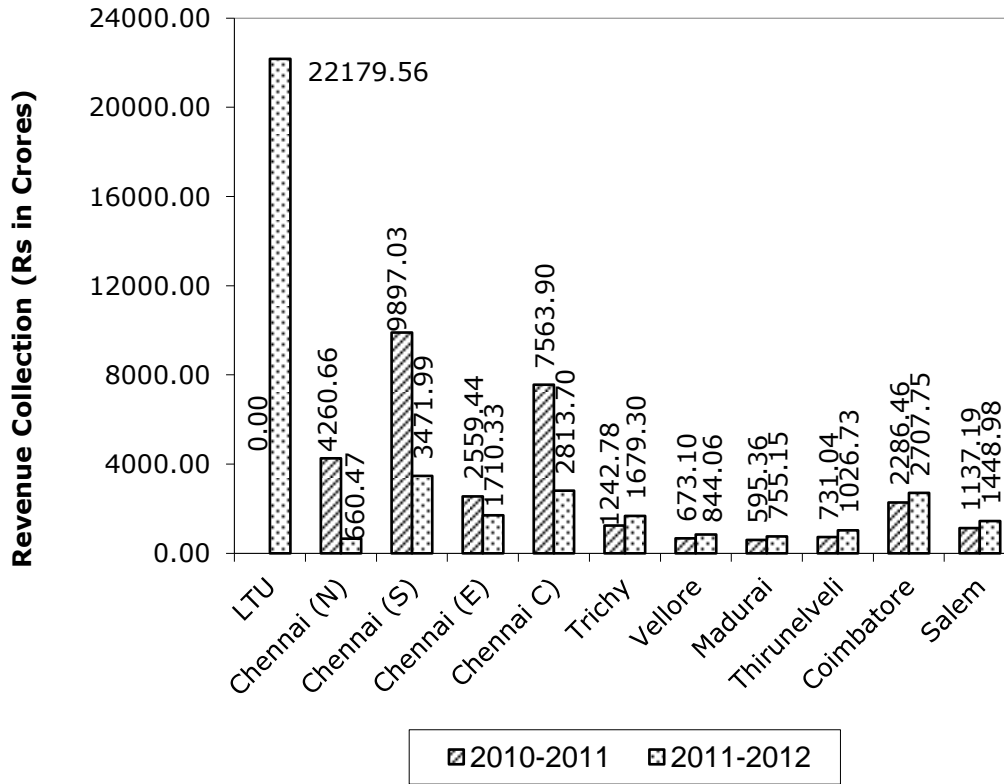
Sl. No.	YEAR	VAT GOODS	NON-VAT GOODS	From OTHER ACTS	TOTAL	% Share of Revenue From VAT Goods to Total	% Share of Revenue From NON-VAT Goods to Total	% Share of Revenue From other ACTS to Total
1	2	3	4	5	6	7	8	9
1	2007-08	7790.51	8668.18	3493.90	19952.59	39.05	43.44	17.51
2	2008-09	9038.10	10249.95	3282.07	22570.12	40.04	45.41	14.55
3	2009-10	10142.78	11175.63	3500.43	24818.84	40.87	45.03	14.10
4	2010-11	12561.87	13794.72	4759.99	31116.58	40.37	44.33	15.30
5	2011-12	16760.61	16948.41	5835.72	39544.74	42.38	42.86	14.76

26. DIVISION-WISE REVENUE COLLECTION

Sl. No.	Division	Revenue Collection (Rs. In Crores)	
		2010-2011	2011-2012
1	2	3	4
1	LTU	0.00	22179.56
2	Chennai (N)	4260.66	660.47
3	Chennai (S)	9897.03	3471.99
4	Chennai (E)	2559.44	1710.33
5	Chennai C)	7563.90	2813.70
6	Trichy	1242.78	1679.30
7	Vellore	673.10	844.06
8	Madurai	595.36	755.15
9	Thirunelveli	731.04	1026.73
10	Coimbatore	2286.46	2707.75
11	Salem	1137.19	1448.98
12	TDS/Chennai (E)	91.90	135.63
13	TDS -A.G.	77.72	96.85
14	Enf.Collection	0.00	14.24
Gross Revenue		31116.58	39544.74
Refund		625.58	823.57
Net Revenue		30491.00	38721.17

Note: LTU formed on 1.4.2011

Division-wise Share of Revenue Collection for the years 2010-11 and 2011-12



27. DIVISION-WISE REVENUE COLLECTIONS UNDER ALL ACTS - 2011-12

(Rs.In Crores)

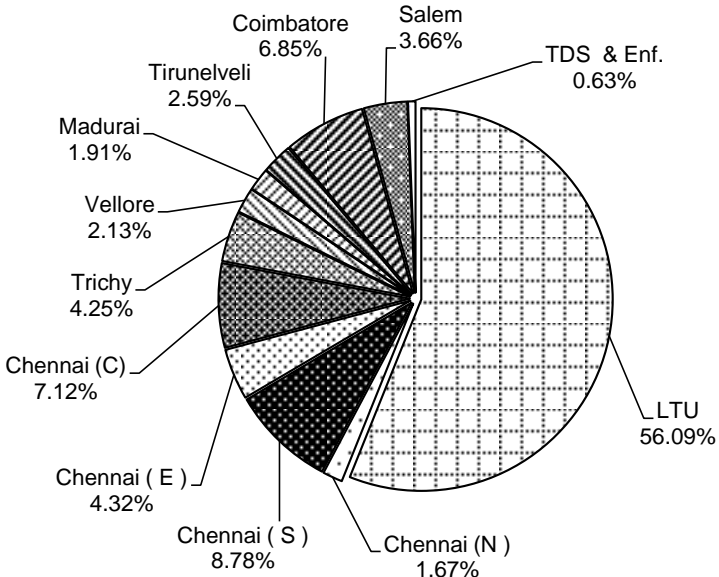
SL. NO	Type of Tax	LTU	Chennai (N)	Chennai (S)	Chennai (E)	Chennai (C)	Tiruchy	Vellore	Madurai	Tirunelveli	Coimbatore	Salem	TDS/Enf	STATE (Gross Revenue)	% to the State
1	2	3	4	5	6	7	8	9	10	11	12	13	14	15	16
1	VALUE ADDED TAX														
	VAT-Goods	5127.84	581.47	2577.73	1358.12	2144.92	741.02	442.00	503.13	783.97	1517.33	983.08	0.00	16760.61	42.4
	NON-VAT-Goods	15266.26	5.37	148.30	7.69	130.51	578.87	282.15	3.34	1.51	508.06	16.35	0.00	16948.41	42.9
	Others	7.45	1.32	0.34	0.06	1.43	1.00	3.75	18.92	0.55	2.40	4.05	0.00	41.21	0.1
	VAT Sub Total	20401.6	588.16	2726.37	1365.87	2276.84	1320.89	727.90	525.35	786.03	2027.79	1003.48	0.00	33750.23	85.3
2	Central Sales Tax	1016.69	59.23	456.98	196.78	246.09	255.75	23.12	53.56	103.49	243.94	163.05	0.00	2818.68	7.1
3	Entry Tax														
	Entry -Goods	0.00	0.00	0.03	0.00	0.00	0.00	0.00	0.01	0.00	0.00	0.00	0.00	0.04	0.0
	Entry -Vehicles	686.77	5.36	176.70	76.36	192.76	77.36	85.49	148.43	101.89	354.60	241.89	0.00	2147.61	5.4
	Entry Tax-sub Total	686.77	5.36	176.73	76.36	192.76	77.36	85.49	148.44	101.89	354.60	241.89	0.00	2147.65	5.4
4	TNGST	74.55	6.73	24.99	7.68	17.06	10.28	1.89	11.06	28.07	46.59	29.90	0.00	258.80	0.7
5	Luxury Tax	0.00	0.99	67.42	45.59	72.00	12.08	4.90	14.92	6.14	25.61	6.82	0.00	256.47	0.6
6	Entertainment Tax	0.00	0.00	12.84	18.05	8.95	2.94	0.76	1.82	1.11	9.12	3.84	0.00	59.43	0.2
7	Betting Tax	0.00	0.00	6.66	0.00	0.00	0.00	0.00	0.00	0.00	0.10	0.00	0.00	6.76	0.0
8	TDS Collection Chennai (E)	0.00	0.00	0.00	0.00	0.00	0.00	0.00	0.00	0.00	0.00	0.00	135.63	135.63	0.3
9	TDS Collection -AG.	0.00	0.00	0.00	0.00	0.00	0.00	0.00	0.00	0.00	0.00	0.00	96.85	96.85	0.2
10	ENF.CIn.	0.00	0.00	0.00	0.00	0.00	0.00	0.00	0.00	0.00	0.00	0.00	14.24	14.24	0.0
	All Taxes of CT	22179.56	660.47	3471.98	1710.33	2813.69	1679.30	844.06	755.14	1026.74	2707.76	1448.99	246.72	39544.74	100.0

28. DIVISION - WISE GROSS REVENUE RECEIPTS

(Rs. In Crores)

SL. NO	CT Division	2006-07		2007-08		2008-09		2009-10		2010-11		2011-12	
		Gross Revenue	% to the Gross	Gross Revenue	% to the Gross	Gross Revenue	% to the Gross	Gross Revenue	% to the Gross	Gross Revenue	% to the Gross	Gross Revenue	% to the Gross
1	2	3	4	5	6	7	8	9	10	11	12	13	14
1	LTU	LTU was formed on 01.04.2011										22180	56.09
2	Chennai (N)	2301	12	2564	13	3056	13	3437	14	4261	14	661	1.67
3	Chennai (S)	6180	32	6498	33	7601	34	7908	32	9897	32	3472	8.78
4	Chennai (E)	1952	10	1889	9	1994	9	2129	8	2559	8	1710	4.32
5	Chennai (C)	4358	23	4649	23	5217	23	5997	24	7564	24	2814	7.12
6	Trichy	596	3	659	3	684	3	848	3	1243	4	1679	4.25
7	Vellore	435	2	443	2	495	2	541	2	673	2	844	2.13
8	Madurai	448	2	404	2	416	2	465	2	595	2	755	1.91
9	Tirunelveli	379	2	350	2	445	2	591	2	731	2	1027	2.59
10	Coimbatore	1763	9	1704	9	1766	8	1881	8	2286	7	2708	6.85
11	Salem	736	4	693	3	761	3	880	4	1137	4	1449	3.66
12	TDS - AG & East	69	0	100	1	135	1	142	1	170	1	232	0.59
13	Enf. Colln.	0	0	0	0	0	0	0	0	0	0	14	0.04
Total		19217	100	19953	100	22570	100	24819	100	31117	100	39545	100.00

Division-wise share of Revenue Collection for the Year 2011-12



**29. CT DISTRICT / ZONEWISE DEALERS FILING MONTHLY RETURNS AND
TAX REVENUE**

Sl.No.	Division	District / Zone	Number of dealers filing monthly returns under VAT Act			Total Revenue under all Acts (Rs. In Croress)		
			2010-11	2011-12	GR (%)	2010-11	2011-12	GR (%)
1	2	3	4	5	6	7	8	9
1	LTU (Formed on 01.04.2011)	LTU-DC-I	0	25	0.00	0.00	5347.91	0.00
		LTU-DC-II	0	25	0.00	0.00	4581.93	0.00
		LTU-DC-III	0	25	0.00	0.00	6434.55	0.00
		LTU-DC-IV	0	25	0.00	0.00	5815.17	0.00
		TOTAL	0	100	0.00	0.00	22179.56	0.00
2	Chennai (N)	ZONE I	4109	4477	8.96	271.83	303.04	11.48
		ZONE II	3948	4473	13.30	112.89	153.39	35.88
		ZONE III	4088	4391	7.41	153.43	204.04	32.99
		FTACIII	19	0	-100.00	3716.05	0.00	-100.00
		ENFT(N)				6.46	0.00	-100.00
		TOTAL	12164	13341	9.68	4260.66	660.47	-84.50
3	Chennai (S)	ZONE VII	14550	18143	24.69	1062.98	1307.82	23.03
		ZONE X	17376	21120	21.55	851.08	919.93	8.09
		KANCHIPURAM	6592	10025	52.08	1245.70	1244.24	-0.12
		FTACIV	17	0	-100.00	6737.27	0.00	-100.00
		TOTAL	38535	49288	27.90	9897.03	3471.99	-64.92
4	Chennai (E)	ZONE V	3908	4483	14.73	619.66	602.55	-2.76
		ZONE VI	4798	5459	13.79	594.03	786.21	32.35
		ZONE IX	5820	6723	15.52	200.66	321.57	60.26
		FTACI	24	0	-100.00	1145.09	0.00	-100.00
		TOTAL	14550	16666	14.54	2559.44	1710.33	-33.18
								(Contd...)

Sl.No.	Division	District / Zone	Number of dealers filing monthly returns under VAT Act			Total Revenue under all Acts (Rs. In Croress)		
			2010-11	2011-12	GR (%)	2010-11	2011-12	GR (%)
1	2	3	4	5	6	7	8	9
5	Chennai (C)	ZONE IV	5991	6476	8.10	696.68	819.72	17.66
		ZONE VIII	9417	7716	-18.06	1077.50	839.83	-22.06
		ZONE XI	7010	9959	42.06	1941.67	1154.15	-40.56
		FTACII	33	0	-100.00	3848.05	0.00	-100.00
		TOTAL	22451	24151	7.57	7563.90	2813.70	-62.80
6	Trichy	TRICHY (T)	6232	6850	9.92	530.60	661.24	24.62
		KARUR	4816	5211	8.20	266.70	301.24	12.95
		THANJAVUR	3031	3233	6.66	46.76	215.62	361.11
		KUMBAKONAM	2555	2839	11.13	30.70	37.85	23.29
		PUDUKKOTTAI	1836	2483	35.22	368.02	463.35	25.90
		TOTAL	18470	20616	11.62	1242.78	1679.30	35.12
7	Vellore	VELLORE	4774	5830	22.13	226.13	322.09	42.44
		TIRUVANNAMALAI	3507	4150	18.33	43.91	56.14	27.85
		CUDDALORE	2963	3364	13.54	81.76	115.92	41.78
		VILLUPURAM	2643	3333	26.09	321.30	349.91	8.90
		TOTAL	13887	16677	20.09	673.10	844.06	25.40
8	Madurai	MADURAI (E)	8468	10297	21.60	177.59	238.19	34.12
		MADURAI (W)	6618	8442	27.57	250.36	321.20	28.30
		DINDIGUL	4188	5229	24.87	132.35	150.46	13.68
		SIVAGANGAI	3533	4322	22.35	35.06	45.30	29.21
		TOTAL	22807	28291	24.05	595.36	755.15	26.84
								(Contd...)

Sl.No.	Division	District / Zone	Number of dealers filing monthly returns under VAT Act			Total Revenue under all Acts (Rs. In Crores)		
			2010-11	2011-12	GR (%)	2010-11	2011-12	GR (%)
1	2	3	4	5	6	7	8	9
9	Tirunelveli	TIRUNELVELI	5049	6486	28.46	184.77	296.27	60.35
		NAGERCOIL	3416	4182	22.42	74.89	98.67	31.75
		TUTICORIN	3404	4205	23.52	96.59	148.07	53.30
		VIRUDHUNAGAR	2139	2394	11.92	241.54	315.27	30.52
		SIVAKASI	5742	6792	18.29	133.25	168.45	26.42
		TOTAL	19750	24059	21.82	731.04	1026.73	40.45
10	Coimbatore	ZONE I	9578	11539	20.47	1008.05	1198.50	18.89
		ZONE II	9215	10795	17.15	373.43	458.08	22.67
		ZONE III	12560	15020	19.59	369.92	468.68	26.70
		TIRUPPUR	14794	19207	29.83	302.57	75.56	-75.03
		POLLACHI	2716	3305	21.69	65.50	74.83	14.24
		NILGIRIS	1792	2049	14.33	36.88	76.94	108.64
		FTAC I	15	16	3.58	70.75	318.67	350.41
		FTAC II	17	17	-2.51	59.35	36.49	-38.52
		TOTAL	50687	61947	22.21	2286.46	2707.75	18.43
11	Salem	SALEM	6453	7752	20.13	312.06	401.62	28.70
		NAMAKKAL	4675	6911	47.83	183.94	217.64	18.32
		ERODE	9037	12208	35.08	224.74	288.27	28.27
		DHARMAPURI	4099	3905	-4.72	416.45	541.45	30.02
		TOTAL	24264	30776	26.84	1137.19	1448.98	27.42
12	TDS				169.62	232.48	37.06	
13	Enft. Colln.					14.24		
State Total			237565	285912	20.35	31116.58	39544.74	27.09
Net Revenue						30491.00	38721.17	26.99

30. DIVISION - WISE VAT DEALERS FILING MONTHLY RETURNS BY TURNOVER SLABS-2011-12

(In Numbers)

Sl. No.	Turnover Slabs	Number of dealers filing monthly returns												
		Chennai(N)	Chennai(S)	Chennai(E)	Chennai(C)	Trichy	Vellore	Madurai	Tirun- elveli	Coimb- atore	Salem	LTU	TOTAL	% to state
1	2	3	4	5	6	7	8	9	10	11	12	13	14	15
1	0-3 Lakhs	2378	13768	4154	5783	2994	2976	5790	5035	20314	6529	0	69721	24.39
2	3-4	310	1289	378	511	426	404	850	653	1807	798	0	7426	2.60
3	4-5	274	1198	332	465	407	407	779	643	1549	712	0	6766	2.37
4	5-10	1151	4741	1372	2022	2147	1667	3413	2400	6226	2997	0	28136	9.84
5	10-25	2321	8407	2844	3814	4461	3440	5721	4549	9880	5192	0	50629	17.71
6	25-50	1861	6112	2051	3112	3366	2667	4060	3588	7052	4263	0	38132	13.34
7	50-75	967	2903	1042	1523	1432	1194	1706	1610	3333	2057	0	17767	6.21
8	75-100	563	1831	690	1075	903	727	1090	960	2086	1402	0	11327	3.96
9	1-10 Croress	2940	7633	3013	4696	3953	2867	4293	4038	8404	5942	1	47780	16.71
10	10-50	451	1092	599	802	442	283	508	495	1075	736	0	6483	2.27
11	50-100	67	170	94	167	54	27	46	53	110	79	4	871	0.30
12	100-200	38	83	55	102	12	8	20	23	65	37	13	456	0.16
13	200-300	8	26	18	33	8	5	3	8	9	14	11	143	0.05
14	300-400	1	11	5	13	0	2	3	1	11	7	7	61	0.02
15	400-500	1	4	5	3	2	0	2	0	4	5	8	34	0.01
16	500 & above	10	20	14	30	9	3	7	3	22	6	56	180	0.06
	Total	13341	49288	16666	24151	20616	16677	28291	24059	61947	30776	100	285912	100.00
	% to State	4.67	17.24	5.83	8.45	7.21	5.83	9.90	8.41	21.67	10.76	0.03	100.00	

31. DIVISION - WISE VAT DEALERS FILING ANNUAL RETURNS BY TURNOVER SLABS-2011-12

(In Numbers)

Sl. No.	Turnover Slabs	Number of Dealers filing Annual returns												STATE	% to state
		Chennai (N)	Chennai (S)	Chennai (E)	Chennai (C)	Trichy	Vellore	Madurai	Tirunelveli	Coimbatore	Salem	LTU			
1	2	3	4	5	6	7	8	9	10	11	12	13	14	15	
1	0-3 Lakhs	2405	35071	5922	12446	43032	46690	23137	34211	34323	64946	0	302183	93.17	
2	3-4	46	320	50	143	123	97	243	135	474	348	0	1979	0.61	
3	4-5	42	278	49	106	103	84	212	86	326	280	0	1566	0.48	
4	5-10	109	795	175	359	361	299	611	311	949	906	0	4875	1.50	
5	10-25	82	740	164	348	444	372	511	279	995	1000	0	4935	1.52	
6	25-50	66	403	143	208	272	234	361	165	552	683	0	3087	0.95	
7	50-75	25	150	70	109	107	74	141	85	268	241	0	1270	0.39	
8	75-100	16	82	40	54	50	58	80	39	184	194	0	797	0.25	
9	1-10 Crores	85	316	236	273	270	177	366	175	627	782	0	3307	1.02	
10	10-50	9	21	28	24	31	9	36	16	36	80	0	290	0.09	
11	50-100	0	3	1	9	7	0	2	0	1	3	0	26	0.01	
12	100-200	2	1	0	1	1	0	0	0	0	4	0	9	0.00	
13	200-300	0	1	1	0	0	0	0	0	0	2	0	4	0.00	
14	300-400	0	0	0	0	0	0	0	0	0	0	0	0	0.00	
15	400-500	0	0	0	0	0	0	0	0	0	0	0	0	0.00	
16	500 & above	0	1	0	0	0	0	0	0	0	0	0	1	0.00	
	Total	2887	38182	6879	14080	44801	48094	25700	35502	38735	69469	0	324329	100.00	
	% to State	0.89	11.77	2.12	4.34	13.81	14.83	7.92	10.95	11.94	21.42	0.00	100.00		

32. DIVISION-WISE TAX REVENUE BY TURN OVER SLABS - 2011-12

(Rs. in Crores)

Sl. No.	Turnover Slabs	Tax Revenue													
		Chennai (N)	Chennai (S)	Chennai (E)	Chennai (C)	Trichy	Vellore	Madurai	Tirunelveli	Coimbatore	Salem	LTU	TDS/Enf.	STATE	% to state
1	2	3	4	5	6	7	8	9	10	11	12	13	14	15	16
1	0-3 Lakhs	0.50	1.98	0.77	2.93	0.57	0.44	1.04	0.62	4.06	1.29	0.00	0.00	14.21	0.04
2	3-4	0.33	1.10	0.36	0.46	0.26	0.23	0.39	0.42	1.20	0.61	0.00	0.00	5.35	0.01
3	4-5	0.36	1.33	0.39	0.51	0.36	0.32	0.51	0.44	1.27	0.65	0.00	0.00	6.13	0.02
4	5-10	2.46	7.35	2.61	3.67	3.57	499.14	3.25	2.56	72.18	4.09	0.00	0.00	600.87	1.52
5	10-25	8.26	27.77	11.36	13.38	8.14	5.63	13.48	9.62	27.33	21.11	0.00	0.00	146.08	0.37
6	25-50	14.86	42.80	15.45	22.72	11.63	8.66	17.22	15.63	41.47	24.16	0.00	0.00	214.59	0.54
7	50-75	12.92	35.69	13.38	20.66	9.39	7.51	13.03	12.33	34.68	18.12	0.00	0.00	177.71	0.45
8	75-100	9.72	32.91	13.29	19.80	7.34	5.53	11.79	8.81	30.72	16.67	0.00	0.00	156.57	0.40
9	100 Croress	323.92	1666.61	766.23	1232.42	596.81	69.97	453.64	571.13	1460.00	782.41	0.16	0.00	7923.32	20.04
10	10-50	141.99	481.56	271.08	407.57	81.40	62.78	108.26	131.07	320.42	200.05	0.00	0.00	2206.18	5.58
11	50-100	56.25	316.24	155.88	306.41	39.67	30.42	47.57	62.83	96.55	74.75	8.26	0.00	1194.82	3.02
12	100-200	44.79	363.89	244.27	444.91	37.28	12.25	41.12	53.28	153.45	89.95	135.76	0.00	1620.94	4.10
13	200-300	11.13	317.17	55.91	131.94	183.58	0.30	10.33	17.01	34.27	66.28	304.01	0.00	1131.94	2.86
14	300-400	0.00	65.79	7.39	54.76	0.00	13.43	9.24	1.31	29.69	93.59	233.84	0.00	509.04	1.29
15	400-500	3.70	13.08	38.08	4.19	5.89	0.00	0.06	0.00	17.62	17.91	519.05	0.00	619.57	1.57
16	500 & above	29.28	96.72	113.88	147.38	693.42	127.46	24.23	139.67	382.84	37.34	20978.47	0.00	22770.68	57.58
TDS/ENF		0.00	0.00	0.00	0.00	0.00	0.00	0.00	0.00	0.00	0.00	0.00	246.72	246.72	0.62
STATE		660.47	3471.99	1710.33	2813.70	1679.30	844.06	755.15	1026.73	2707.75	1448.98	22179.56	246.72	39544.74	100.00
% to State		1.67	8.78	4.33	7.12	4.25	2.13	1.91	2.60	6.85	3.66	56.09	0.62	100.00	

33. DIVISION-WISE VAT DEALERS FILING MONTHLY RETURNS BY TAX SLABS - 2011-12

(in Number)

Sl. No.	Tax Slab	Number of Dealers filing monthly returns												
		Chennai (N)	Chennai (S)	Chennai (E)	Chennai (C)	Trichy	Vellore	Madurai	Tirunelveli	Coimbatore	Salem	LTU	STATE	% to state
1	2	3	4	5	6	7	8	9	10	11	12	13	14	15
1	<1000 Rupees	3496	15487	4677	6979	5677	5416	9951	9252	24085	10415	3	95438	33.38
2	1000-5000	1042	4092	1255	1799	2873	2128	3692	2467	5167	3082	0	27597	9.65
3	5000-10000	877	3641	1176	1564	2437	1882	2762	2110	4161	2547	0	23157	8.10
4	10000-50000	2921	9763	3194	4562	5141	3718	5888	4818	11257	6529	0	57791	20.21
5	50000-100000	1267	3792	1282	1887	1287	834	1626	1452	4199	2088	0	19714	6.90
6	1-5 Rs Lakhs	2213	6217	2282	3466	1800	1245	2486	2187	6383	3532	0	31811	11.13
7	5-10	568	1400	568	952	360	253	505	458	1392	689	0	7145	2.50
8	10-50	577	1652	739	1228	366	235	505	427	1319	703	3	7754	2.71
9	50-100	75	298	145	240	48	32	65	95	205	111	1	1315	0.46
10	1-10 Rs Crores	78	310	185	287	56	31	66	93	162	122	15	1405	0.49
11	10-20	2	22	12	25	1	1	1	2	10	5	7	88	0.03
12	20-30	0	3	4	3	0	1	0	1	2	1	14	29	0.01
13	30-40	0	0	0	1	0	0	0	0	0	0	9	10	0.00
14	40-50	0	0	0	0	0	0	0	0	0	2	7	9	0.00
15	>50	0	1	0	1	4	2	0	2	3	0	41	54	0.02
16	Return Not Filed	225	2610	1147	1157	566	899	744	695	3602	950	0	12595	4.41
	Total	13341	49288	16666	24151	20616	16677	28291	24059	61947	30776	100	285912	100.00
	% to state	4.67	17.24	5.83	8.45	7.21	5.83	9.90	8.41	21.67	10.76	0	100.00	

34.DIVISION-WISE TAX REVENUE BY TAX SLABS - 2011-12

(in Rs.Crores)

Sl. No	Tax Slab	Tax Revenue												STATE	% to state	
		Chennai (N)	Chennai (S)	Chennai (E)	Chennai (C)	Trichy	Vellore	Madurai	Tirunelveli	Coimbatore	Salem	LTU	TDS/ENFT.			
1	2	3	4	5	6	7	8	9	10	11	12	13	14	15	16	
1	<1000 Rupees	0.02	0.07	0.02	0.03	0.04	0.03	0.06	0.04	0.10	0.05	0.00	0.00	0.46	0.00	
2	1000-5000	0.30	1.16	0.36	0.52	0.84	0.60	1.06	0.71	1.45	0.89	0.00	0.00	7.87	0.02	
3	5000-10000	0.64	2.67	0.86	1.16	1.78	1.36	1.99	1.54	3.04	1.86	0.00	0.00	16.90	0.04	
4	10000-50000	7.49	23.90	7.94	11.27	11.51	8.24	13.44	11.16	27.68	15.56	0.00	0.00	138.18	0.35	
5	50000-100000	9.12	27.28	9.30	13.55	9.20	5.88	11.71	10.33	30.03	14.95	0.00	0.00	141.36	0.36	
6	1-5 Rs Lakhs	49.91	141.38	52.27	79.81	39.39	27.12	55.10	48.45	142.11	79.41	0.00	0.00	714.94	1.81	
7	5-10	39.86	98.91	39.98	67.62	25.41	18.18	35.23	32.08	97.61	48.65	0.00	0.00	503.53	1.27	
8	10-50	120.87	345.10	157.74	268.41	77.50	51.24	105.60	92.53	280.26	151.09	0.46	0.00	1650.81	4.17	
9	50-100	51.05	207.63	99.73	166.80	32.90	21.57	45.33	67.07	139.76	76.84	0.62	0.00	909.29	2.30	
10	1-10 Rs Crores	352.28	2147.55	1080.34	1677.79	616.45	71.91	466.58	189.33	1444.03	870.81	62.83	0.00	8979.89	22.71	
11	10-20	28.94	285.41	165.12	334.01	14.31	13.41	19.04	24.95	132.64	73.18	110.41	0.00	1201.42	3.04	
12	20-30	0.00	65.43	96.68	75.01	0.00	21.38	0.00	21.25	47.21	27.99	350.77	0.00	705.72	1.78	
13	30-40	0.00	0.00	0.00	32.90	0.00	0.00	0.00	0.00	0.00	0.00	293.97	0.00	326.87	0.83	
14	40-50	0.00	0.00	0.00	0.00	0.00	0.00	0.00	0.00	0.00	87.70	309.56	0.00	397.26	1.00	
15	>50	0.00	125.51	0.00	84.83	849.97	603.14	0.00	527.30	361.84	0.00	21050.93	0.00	23603.50	59.69	
	TDS/ENF	0.00	0.00	0.00	0.00	0.00	0.00	0.00	0.00	0.00	0.00	0.00	0.00	246.72	246.72	0.62
	STATE	660.47	3471.99	1710.33	2813.70	1679.30	844.06	755.15	1026.73	2707.75	1448.98	22179.56	246.72	39544.74	100.00	
	% to State	1.67	8.78	4.33	7.12	4.25	2.13	1.91	2.60	6.85	3.66	56.09	0.62	100.00		

35. DISTRIBUTION OF VAT DEALERS FILING MONTHLY RETURNS BY TURNOVER SLABS AND TAX SLABS - 2011-12

(in Numbers)

Sl. No	TAX SLABS	Turnover Slabs																Total
		Rs. In Lakhs								Rs. In Crores								
		0-3	3-4	4-5	5-10	10-25	25-50	50-75	75-100	1-10	10-50	50-100	100-200	200-300	300-400	400-500	>500	
1	2	3	4	5	6	7	8	9	10	11	12	13	14	15	16	17	18	19
1	< 1000 RS.	43681	2946	2517	8557	11979	8209	4108	2504	9697	1058	102	43	10	10	4	13	95438
2	1000-5000	7411	1759	1658	6323	4541	2610	1035	552	1611	92	2	1	0	2	0	0	27597
3	5000-10000	3313	754	626	3696	9483	2115	973	565	1542	78	7	4	0	1	0	0	23157
4	10000-50000	2658	1879	1750	8107	16101	13770	3937	2183	6884	471	20	15	6	2	1	7	57791
5	50000-100000	28	82	205	1094	5667	4460	2160	1248	4417	310	29	9	1	0	2	2	19714
6	1-5 Lakhs	24	6	8	340	2819	6671	4916	3659	12245	990	73	25	8	6	1	20	31811
7	5-10	7	0	2	15	32	293	613	438	5161	525	38	13	2	1	1	4	7145
8	10-50	2	0	0	1	4	2	25	178	5757	1568	150	47	9	4	2	5	7754
9	50-100	0	0	0	0	0	1	0	0	397	751	98	47	12	2	2	5	1315
10	1-10 Crores	2	0	0	1	3	1	0	0	68	639	341	212	68	18	11	41	1405
11	10-20	0	0	0	0	0	0	0	0	0	1	11	31	17	6	2	20	88
12	20-30	0	0	0	0	0	0	0	0	0	0	0	8	5	2	2	12	29
13	30-40	0	0	0	0	0	0	0	0	0	0	0	0	2	1	1	6	10
14	40-50	0	0	0	0	0	0	0	0	0	0	0	0	0	6	0	3	9
15	>50 Crores	0	0	0	2	0	0	0	0	1	0	0	1	3	0	5	42	54
16	Return Not Filed	12595	0	0	0	0	0	0	0	0	0	0	0	0	0	0	0	12595
	TOTAL	69721	7426	6766	28136	50629	38132	17767	11327	47780	6483	871	456	143	61	34	180	285912

36. DISTRIBUTION OF TAX REVENUE BY TURNOVER SLABS AND TAX SLABS - 2011-12

(Rs.in Crores)

Sl. No.	TAX SLABS	Turnover Slabs																TDS/ENF	TOTAL		
		Rs. In Lakhs									Rs. In Crores										
		0-3	3-4	4-5	5-10	10-25	25-50	50-75	75-100	1-10	10-50	50-100	100-200	200-300	300-400	400-500	>500				
1	2	3	4	5	6	7	8	9	10	11	12	13	14	15	16	17	18	19	20		
1	< 1000 RS.	0.22	0.02	0.02	0.05	0.07	0.04	0.01	0.01	0.02	0.00	0.00	0.00	0.00	0.00	0.00	0.00	0.00	0.00	0.00	
2	1000-5000	1.85	0.45	0.46	2.10	1.31	0.75	0.30	0.16	0.46	0.03	0.00	0.00	0.00	0.00	0.00	0.00	0.00	0.00	0.00	
3	5000-10000	2.36	0.55	0.46	2.52	7.12	1.56	0.71	0.42	1.14	0.06	0.00	0.00	0.00	0.00	0.00	0.00	0.00	0.00	0.00	
4	10000-50000	4.70	3.75	3.62	19.97	37.17	32.26	10.60	5.96	18.72	1.28	0.05	0.04	0.01	0.01	0.00	0.02	0.00	0.00	0.00	
5	50000-100000	0.20	0.46	1.25	7.85	39.63	32.43	15.81	9.21	32.02	2.19	0.21	0.07	0.01	0.00	0.01	0.02	0.00	0.00	0.00	
6	1-5 Lakhs	0.49	0.13	0.19	4.35	46.12	127.66	104.53	88.62	314.11	25.43	1.95	0.55	0.20	0.12	0.03	0.48	0.00	0.00	0.00	
7	5-10	0.43	0.00	0.13	1.04	2.43	17.28	42.86	31.41	365.28	38.48	2.77	0.86	0.15	0.05	0.06	0.30	0.00	0.00	0.00	
8	10-50	0.35	0.00	0.00	0.39	0.84	0.23	2.89	20.79	1148.90	417.42	39.67	13.30	2.77	1.12	0.69	1.45	0.00	0.00	0.00	
9	50-100	0.00	0.00	0.00	0.00	0.00	0.67	0.00	0.00	265.78	523.88	69.93	33.18	9.36	1.54	1.24	3.72	0.00	0.00	0.00	
10	1-10 Crores	3.61	0.00	0.00	1.40	11.38	1.71	0.00	0.00	83.99	1181.27	957.49	861.52	290.03	86.70	48.73	5452.05	0.00	0.00	0.00	
11	10-20	0.00	0.00	0.00	0.00	0.00	0.00	0.00	0.00	0.00	16.15	122.74	436.47	224.31	76.57	26.38	298.79	0.00	0.00	0.00	
12	20-30	0.00	0.00	0.00	0.00	0.00	0.00	0.00	0.00	0.00	0.00	0.00	190.12	126.86	48.73	46.46	293.55	0.00	0.00	0.00	
13	30-40	0.00	0.00	0.00	0.00	0.00	0.00	0.00	0.00	0.00	0.00	0.00	0.00	68.13	31.45	32.50	194.79	0.00	0.00	0.00	
14	40-50	0.00	0.00	0.00	0.00	0.00	0.00	0.00	0.00	0.00	0.00	0.00	0.00	0.00	262.77	0.00	134.50	0.00	0.00	0.00	
15	>50 Crores	0.00	0.00	0.00	0.00	0.00	0.00	0.00	0.00	0.00	0.00	0.00	84.83	410.10	0.00	463.48	22645.10	0.00	0.00	0.00	
TDS/ENF		0.00	0.00	0.00	0.00	0.00	0.00	0.00	0.00	0.00	0.00	0.00	0.00	0.00	0.00	0.00	0.00	246.72	0.00	0.00	0.00
STATE		14.21	5.35	6.13	39.67	146.08	214.59	177.71	156.57	2230.43	2206.18	1194.82	1620.94	1131.94	509.04	619.57	29024.77	246.72	0.00	0.00	0.00

37.MONTH - WISE AND DIVISION - WISE GROSS REVENUE COLLECTION - 2011-2012

Sl. No.	Division	(Rs.In Crores)												
		Apr-11	May-11	Jun-11	Jul-11	Aug-11	Sep-11	Oct-11	Nov-11	Dec-11	Jan-12	Feb-12	Mar-12	Division Total
1	1	2	3	2	4	5	3	6	7	4	8	9	5	10
1	LTU	1784.51	1573.04	1687.73	1728.68	1875.96	1877.18	1888.92	1851.46	1797.50	1934.02	1937.05	2243.51	22179.56
2	Chennai (N)	47.00	45.93	47.49	50.18	53.01	56.50	57.79	57.75	56.64	55.00	58.00	75.18	660.47
3	Chennai (S)	231.89	228.55	245.01	251.70	281.11	292.04	300.33	300.02	303.12	305.10	333.06	400.06	3471.99
4	Chennai (E)	111.32	111.02	119.33	122.35	133.67	144.14	150.95	145.01	145.00	155.79	160.09	211.66	1710.33
5	Chennai (C)	216.09	187.95	193.88	197.04	234.81	228.09	247.02	237.50	231.12	258.61	250.35	331.24	2813.70
6	Trichy	138.17	101.07	110.22	123.86	145.01	141.32	151.01	130.03	140.70	145.68	150.62	201.61	1679.30
7	Vellore	68.11	64.70	60.22	64.54	67.58	66.90	70.85	71.04	69.45	70.15	75.65	94.87	844.06
8	Madurai	54.23	54.95	52.81	56.88	62.02	63.04	64.54	62.12	61.52	64.92	67.03	91.09	755.15
9	Tirunelveli	66.97	62.32	65.72	70.16	78.72	84.46	92.25	92.51	92.16	96.80	104.05	120.61	1026.73
10	Coimbatore	215.15	197.99	205.04	209.60	222.09	233.31	238.80	225.60	213.09	230.40	227.66	289.02	2707.75
11	Salem	108.33	102.28	100.10	107.23	116.00	121.05	125.48	122.31	120.05	129.04	138.49	158.62	1448.98
Divn. Total		3041.77	2729.80	2887.55	2982.22	3269.98	3308.03	3387.94	3295.35	3230.35	3445.51	3502.05	4217.47	39298.02
12	TDS -AG	0.00	24.15	8.78	4.91	5.22	4.51	6.93	6.62	4.88	0.00	0.00	30.85	96.85
13	TDS East	13.65	6.64	8.18	14.42	11.99	9.43	11.42	10.06	12.25	14.10	9.08	14.41	135.63
14	Enf.Collection	0.45	1.01	0.57	0.98	0.73	0.67	0.66	1.22	1.08	1.51	1.65	3.71	14.24
Gross Revenue		3055.87	2761.60	2905.08	3002.53	3287.92	3322.64	3406.95	3313.25	3248.56	3461.12	3512.78	4266.44	39544.74

38. PERFORMANCE OF FIELD AUDIT DONE BY THE ENFORCEMENT WING -2011-12

(Rs.in Crores)

Sl. No.	Enforcement Division	No. of cases Audited	Revenue detected	Revenue collected at the instance of Audit	ITC Suggested for Reversal	Balance amount to be Collected
1	2	3	4	5	6	7
1	Chennai-I	53	853.13	1.86	24.36	826.91
2	Chennai-II	38	6572.25	1.13	386.97	6184.15
3	Trichy	0	0.00	0.00	0.00	0.00
4	Madurai	6	6.66	0.01	0.00	6.65
5	Tirunelveli	0	0.00	0.00	0.00	0.00
6	Coimbatore	177	17.99	1.49	1.40	15.09
7	Salem	4	0.74	0.07	0.00	0.68
8	Vellore	0	0.00	0.00	0.00	0.00
Total		278	7450.77	4.56	412.73	7033.48

39.DETAILS OF SURPRISE INSPECTION DONE BY THE ENFORCEMENT WING - 2011-12

(Rs.in Crores)

Sl. No.	Enforcement Division	No.of.cases Inspected	No.of.cases in which defects noticed	Revenue detected (Tax +Penalty)	Revenue collected	Balance amount to be collected	ITC suggested for reversal
1	2	3	4	5	6	7	8
1	Chennai - I	95	82	524.74	40.14	464.33	13.32
2	Chennai - II	316	310	376.53	9.73	358.12	8.68
3	Trichy	116	115	11.22	8.97	2.23	0.00
4	Madurai	62	62	18.49	0.33	16.64	1.52
5	Tirunelveli	51	46	10.11	1.63	8.44	0.04
6	Coimbatore	114	109	133.90	3.17	129.03	8.59
7	Salem	40	40	91.10	0.69	90.41	0.00
8	Vellore	98	95	13.96	4.22	9.61	0.12
Total		892	859	1180.05	68.88	1078.81	32.27

40.LORRY CHECK AT THE CHECKPOST 2011-12

(Rs.in Crores)

Sl. No.	Enforcement Division	Total No. of Vehicles Checked	No. of offences Booked	Compounding Fees Collected	Advance Tax Collected	Total Amount Collected
1	2	3	4	5	6	7
1	Chennai - I	276952	1585	2.34	14.83	17.18
2	Chennai - II	39561	888	0.22	0.22	0.44
3	Trichy	33664	140	0.03	0.01	0.04
4	Madurai	51141	2534	0.24	0.03	0.27
5	Tirunelveli	256259	421	0.07	0.17	0.24
6	Coimbatore	892382	1802	0.96	1.20	2.16
7	Salem	1195290	2989	1.55	3.96	5.50
8	Vellore	270125	1969	3.22	1.53	4.75
Total		3015374	12328	8.63	21.95	30.58

41.LORRY CHECK BY THE ROVING SQUADS 2011-12**(Rs.in Crores)**

Sl. No.	Enforcement Division	Total No. of Vehicles Checked	No. of offences Booked	Compounding Fees Collected	Advance Tax Collected	Total Amount Collected
1	2	3	4	5	6	7
1	Chennai - I	139612	3233	4.52	6.44	10.96
2	Chennai - II	79822	5226	3.84	1.72	5.56
3	Trichy	82803	2222	0.53	2.78	3.31
4	Madurai	35257	7653	2.15	0.04	2.19
5	Tirunelveli	22622	1162	0.42	0.48	0.90
6	Coimbatore	68712	1751	3.11	2.14	5.25
7	Salem	44697	1712	1.74	2.76	4.50
8	Vellore	21764	1521	1.51	0.35	1.86
Total		495289	24480	17.82	16.71	34.53

42. SALES TAX / VAT REVENUE OF SELECTED STATES

(Rs.in Crores)

Sl.No.	State	2007-2008	2008-2009	2009-2010	2010-2011	2011-2012	G.R
1	2	3	4	5	6	7	8
1	Maharashtra	31214.05	34307.49	36936.60	47302.14	56708.43	19.9
2	Andhra Pradesh	20106.09	23258.03	25068.89	32880.10	36742.76	11.7
3	Tamil Nadu	19952.59	22570.12	24818.84	31116.58	39544.74	27.1
4	Gujarat	15817.39	16595.25	18215.00	27281.13	31172.91	14.3
5	Karnataka	16163.50	17422.17	18767.01	23721.81	28784.56	21.3
6	Kerala	9372.00	11571.47	13149.65	16155.95	19303.38	19.5

**43.DIVISION-WISE NO. OF CT DISTRICTS/ZONES
AND ASSESSMENT CIRCLES - 2011-12**

Sl.No.	Division	No. of CT Districts / Zones	No. of Assesment Circles
1	2	3	4
1	LTU	4	4
2	Chennai(N)	3	21
3	Chennai(S)	3	25
4	Chennai(E)	3	22
5	Chennai(C)	3	21
6	Trichy	5	41
7	Vellore	4	30
8	Madurai	4	38
9	Tirunelveli	5	33
10	Coimbatore	6	47
11	Salem	4	41
Total		44	323

TABLE-44

LARGE TAXPAYERS UNIT

The Large Taxpayer Unit (LTU) started functioning with effect from 01.04.2011. It was formed by merging the erstwhile Fast Track Assessment Circles I to IV of Chennai Divisions with the top 100 taxpayers in Chennai Territorial Divisions. LTU is contributing about 60% of the State's Commercial Taxes Revenue.

The selected 100 dealers are allotted to Deputy Commissioners (CT) I to IV (25 cases each). LTU is headed by a Joint Commissioner [CT] in the cadre of IAS who is the overall in-charge for all matters pertaining to its functioning. The four Deputy Commissioners are performing the assessment and statutory functions under the control and supervision of the Joint Commissioner [CT].

The LTU is performing all the statutory functions presently mandated under the Tamil Nadu Value Added Tax Act, 2006, Central Sales Tax Act, 1956 and Entry of Vehicles into Local Areas Act, 1990. It also provides certain tangible advantages such as time bound disposal of refund claims and settlement of non statutory disputes etc., and to follow single set of simple and transparent procedures for all taxpayers. The underlying commitment is of providing better service to the taxpayer, through personalized attention, quality of service, transparency in transactions and cordial atmosphere. This will reduce tax compliance cost, and eliminate delays.

LARGE TAXPAYERS UNIT

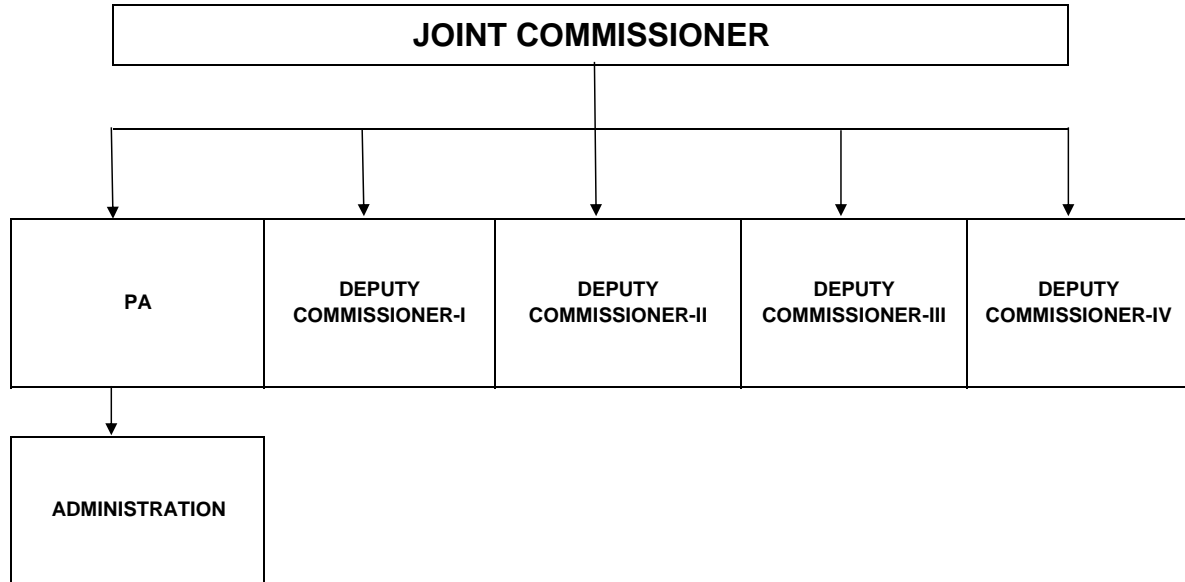
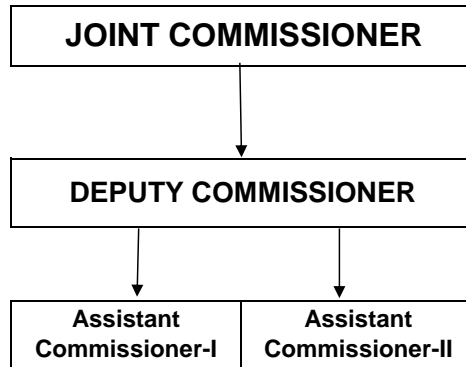


TABLE-45

MEMORANDUM OF UNDERSTANDING CELL

A cell was formed with effect from 26.3.2008 to issue necessary certificates for refund and soft loan for MOU companies, subject to fulfillment of conditions stipulated. It is headed by a Joint Commissioner and is assisted by a Deputy Commissioner and Two Assistant Commissioners. The MOU Cell examines the issues relating to operating sales tax/VAT incentives and other concessions for MOU projects under VAT Scheme among others.

MoU



46. CHECKPOSTS

SI No.	Name of Checkposts	Border State	National Highways	C.T.District/
			State Highways	Zone
1	2	3	4	5
1	CHENNAI ENFORCEMENT WING - I - 2			
	Puzhal. (Outgoing) Major Border	Andhra Pradesh	National Highways	Kancheepuram
	Pethikuppam (Incoming) Maj-Border	Andhra Pradesh	National Highways	
2	CHENNAI ENFORCEMENT WING - II - 2			
	Tiruttani - Minor Border	Andhra Pradesh	State Highways	Kancheepuram
	Uthukkottai - Minor Border	Andhra Pradesh	State Highways	
3	COIMBATORE ENFORCEMENT WING - 6			
	K.G.Chavadi (In) Maj-Border	Kerala	National Highways	Zone I, Coimbatore
	K.G.Chavadi (Out) Maj-Border	Kerala	National Highways	Zone I, Coimbatore
	Pitchanur – Minor Border	Kerala	State Highways	Zone I, Coimbatore
	Gudalur – Minor Border	Kerala	State Highways	The Nilgiris
	Gopalapuram – Minor Border	Kerala	State Highways	Pollachi
	Meenakshipuram – Minor Border	Kerala	State Highways	Pollachi
4	SALEM ENFORCEMENT WING - 5			
	Hosur (Incoming)- Major-Border	Karnataka	National Highways	Dharmapuri
	Hosur (Out going)- Major –Border	Karnataka	National Highways	Dharmapuri
	Thoppur(In) – Major Border	Andhra Pradesh	National Highways	Dharmapuri
	Thoppur(Out)- Major Border	Andhra Pradesh	National Highways	Dharmapuri
	Bannari – Major Border	Karnataka	National Highways	Erode

(ctd...)

CHECKPOSTS

1	2	3	4	5
5	TRICHY ENFORCEMENT WING - 2			
	Tharangambadi (Minor Border)	Pondicherry	National Highways	Kumbakonam
	Melavanjoor (Minor Border)	Pondicherry	National Highways	Kumbakonam
6	VELLORE ENFORCEMENT WING - 7			
	Ranipet (In) - Major Border	Andhra	National Highways	Vellore
	Ranipet (Out) - Major Border	Andhra	National Highways	Vellore
	Katpadi (Major Border)	Andhra	National Highways	Vellore
	Kottakuppam (Minor Border) (Keezputhupattu)	Pondicherry	State Highways	Villupuram
	Pattanur (Minor Border)	Pondicherry	State Highways	Villupuram
	Pennaiyar Bridge (Minor Border)	Pondicherry	State Highways	Cuddalore
	Kandamangalam (Major Border) (now at Lingreddypalayam)	Pondicherry	National Highways	Villupuram
7	MADURAI ENFORCEMENT WING - 2			
	Lower Camp (Minor Border)	Kerala	National Highways	Madurai (W)
	Bodimettu (Minor Border)	Kerala	State Highways	Madurai (W)
8	TIRUNELVELI ENFORCEMENT WING - 3			
	Puliyarai (Major Border)	Kerala	National Highways	Tirunelveli
	Kaliyakkavilai (Major Border)	Kerala	National Highways	Nagercoil

Sl.No	47. TERRITORIAL JURISDICTION.			
1	2	3	4	5
I	DIVISION : LARGE TAX PAYER'S UNIT (LTU) - FORMED ON 01.04.2011 BY MERGING THE FTACS I,II,III AND IV IN CHENNAI			
	Assessment Circles	DC(CT)-I, DC(CT)-II, DC(CT)-III, DC(CT)-IV		
II	DIVISION : CHENNAI (NORTH)		NO.OF ZONES : 3, NO.OF ASSESSMENT CIRCLES : 21.	
	Assessment Circles	Zone - I	Zone - II	Zone - III
		Harbour - I	Loansquare - I	Evening Bazaar
		Harbour - II	Loansquare - II	Rattan Bazaar
		Harbour - III		Park Town - I
		Harbour - IV	Kothawalchavadi	Park Town - II
		Harbour - V	Sowcarpet - I	Moore Market(North)
		Esplanade - I	Sowcarpet - II	Moore Market(South)
Esplanade - II	Sowcarpet - III	Peddunaickenpet(South)		
III	DIVISION : CHENNAI (SOUTH)		NO.OF ZONES : 3, NO.OF ASSESSMENT CIRCLES : 25.	
	Assessment Circles	Zone - VII	Zone - X	Kancheepuram
		Adayar - I	Ambattur	Chengalpattu
		Adayar - II	Ashok Nagar	Kancheepuram(North)
		Alandur	Avadi	Kancheepuram(South)
		Guindy	Korattur	Maduranthagam
		Tambaram - I	Koyambedu	Ponneri
		Tambaram - II	Porur	Sriperumbudur
		Tiruvanmiyur	Saligramam	Tiruttani
		Velachery	Villivakkam	Tiruvallur
Saidapet				

(ctd.)

TERRITORIAL JURISDICTION

	1	2	3	4	
IV	DIVISION : CHENNAI (EAST)			NO.OF ZONES : 3, NO.OF ASSESSMENT CIRCLES : 22	
	Assessment Circles	Zone - V		Zone - VI	Zone - IX
		Annasalai - I		Royapettah - I	Peddunaickenpet (North)
		Annasalai - II		Royapettah - II	Vallalar Nagar
		Annasalai - III		Alwarpet	Royapuram
		Chintadripet		Ice House	Tondaiarpet
		Triplicane - I		Luz	Washermenpet - I
		Triplicane - II		Mandaveli	Washermenpet - II
		Chepauk		Mylapore	Mannady (East)
				Mannady (West)	
V	DIVISION : CHENNAI (CENTRAL)			NO.OF ZONES: 3, NO.OF ASSESSMENT CIRCLES : 21	
	Assessment Circles	Zone - IV		Zone - VIII	Zone - XI
		Nungambakkam		Ayyanavaram	Valluvar Kottam
		Egmore - I		Amainthakarai	Vadapalani - I
		Egmore - II		Kilpauk	Vadapalani - II
		Purasawalkam		Manali	T.Nagar (North)
		Vepery		Tiruvotriyur	T.Nagar (South)
		Periamet		Perambur - I	T.Nagar (East)
		Choolai		Perambur - II	Nandhanam

(ctd.)

TERRITORIAL JURISDICTION

DIVISION : TRICHY		NO.OF CT DISTRICTS : 5 NO. OF ASSESSMENT CIRCLES:41			
Assessment Circles	Trichy	Karur	Thanjavur	Kumbakonam	Pudukkottai
	Gandhi Market	Karur(North)	Thanjavur - I	Kumbakonam - I	Pudukkottai - I
	Rockfort	Karur(South)	Thanjavur - II	Kumbakonam - II	Pudukkottai - II
	Singarathoppu	Karur(West)	Papanasam	Kumbakonam - III	Aranthangi
	Mailamchandai-I	Karur(East)	Mannargudi	Kumbakonam - IV	Pattukottai - I
	Mailamchandai-II	Jayamkondam	Tiruthuraiipoondi	Mayiladuthurai - I	Pattukottai - II
	Palakkarai - I	Ariyalur	Tiruvarur	Mayiladuthurai - II	
	Palakkarai - II	Thuraiyur	Nagapattinam	Sirkali	
	Tiruverumbur	Musiri		Nannilam	
	Srirangam	Kulithalai			
	Lalgudi	Manapparai			
	Woraiyur				

(ctd...)

TERRITORIAL JURISDICTION

DIVISION : VELLORE		NO.OF CT DISTRICTS : 4 NO. OF ASSESSMENT CIRCLES:30		
Assessment Circles	Vellore	Tiruvanna- malai	Cuddalore	Villupuram
	Vellore(North)	Tiruvannamali-I	Cuddalore (Town)	Villupuram - I
	Vellore(South)	Tiruvannamali-II	Cuddalore (Taluk)	Villupuram - II
	Vellore(Rural)	Vaniyambadi	Virudachalam	Tirukoilur
	Ambur	Thirupathur	Chidambaram - I	Tindivanam
	Ranipet	Polur	Chidambaram - II	Gingee
	Ranipet Sipcot	Arani	Panruti (Town)	Kallakurichi
	Gudiyatham(East)	Arcot	Panruti (Rural)	
	Gudiyatham(West)	Vandavasi		
	Arakkonam			

(ctd...)

TERRITORIAL JURISDICTION

DIVISION : MADURAI		NO.OF CT DISTRICTS : 4 NO.OF ASSESSMENT CIRCLES : 38		
Assessment Circles	Madurai (East)	Madurai (West)	Dindigul	Sivagangai
	West Tower St.	Theni - I	Dindigul - I	Tirupathur
	Kamarajar Salai	Theni - II	Dindigul - II	Karaikudi
	South Avani Moola St.	Periyakulam	Dindigul - III	Devakottai
	Vengalakadai St.	Bodinayakanoor	Dindigul - IV	Sivagangai
	Thallakulam	Uthamapalayam	Dindigul - V	Paramakudi
	Chokkikulam	Thirumangalam	Dindigul (Rural)	Ramanathapuram
	Tamil Sangam Rd.	West Veli St.	Palani - I	Mudukulathur
	Chitrakara Street	Mahal	Palani - II	
	Nethaji Road	Madurai Rural(S)	Nilakottai	
	Munichalai Road	Thiruparankundram	Kodaikanal	
	Melur			

(ctd...)

TERRITORIAL JURISDICTION

DIVISION : TIRUNELVELI		NO.OF CT DISTRICTS : 5 NO.OF ASSESSMENT CIRCLES : 33			
Assessment Circles	Tirunelveli	Nagercoil	Tuticorin	Sivakasi	Virudhunagar
	Tirunelveli (Town)	Nagercoil(Town)	Tuticorin - I	Sivakasi - I	Virudhunagar-I
	Tirunelveli (Jn)	Nagercoil(Rural)	Tuticorin - II	Sivakasi - II	Virudhunagar-II
	Tirunelveli(Bazaar)	Nagercoil(Tower)	Tuticorin - III	Sivakasi - III	Virudhunagar-III
	Palayamkottai	Kulithurai	Kovilpatti - I	Sivakasi - IV	Aruppukkottai
	Ambasamudram	Thuckalay	Kovilpatti - II	Rajapalayam - I	Sathur
	Nanguneri		Ettayapuram	Rajapalayam - II	
	Tenkasi		Tiruchendur	Srivilliputhur	
	Shenkottai				
	Sankarankoil				

(ctd...)

TERRITORIAL JURISDICTION

DIVISION : COIMBATORE				NO.OF CT DISTRICTS : 6 NO.OF ASSESSMENT CIRCLES : 47 (INCLUDES 2 FTACS)		
Assessment Circles	Zone - I	Zone - II	Zone - III	Pollachi	Tiruppur	Nilgiri's
	R.G.Street	Ramnagar	Pappanaicken Palayam	Pollachi (East)	Tiruppur (North)	Udagamandalam (South)
	Oppanakara St.	R.S.Puram (East)	Dr.Nanjappa Road	Pollachi (West)	Tiruppur (Central I)	Udagamandalam (North)
	N.H.Road	R.S.Puram (West)	Gandhipuram	Pollachi (Rural)	Tiruppur(Central II)	Kothagiri
	B.B.Street	Mettu palayam Rd.	Ganapathi	Udumalpet (South)	Tiruppur (South)	Gudalur
	Avinashi Rd	Saibaba Colony	Avaram Palayam	Udumalpet (North)	Tiruppur (Kongunagar)	Coonoor
	Trichy Road	Thudiyalur	Peelamedu (South)	Valparai	Tiruppur (Lakshminagar)	
	Singanallur	Mettu palayam	Peelamedu (North)		Tiruppur (Bazaar)	
	Pothanur	Velandi palayam	Avinashi		Tiruppur(Rural)	
	Perur				Palladam	

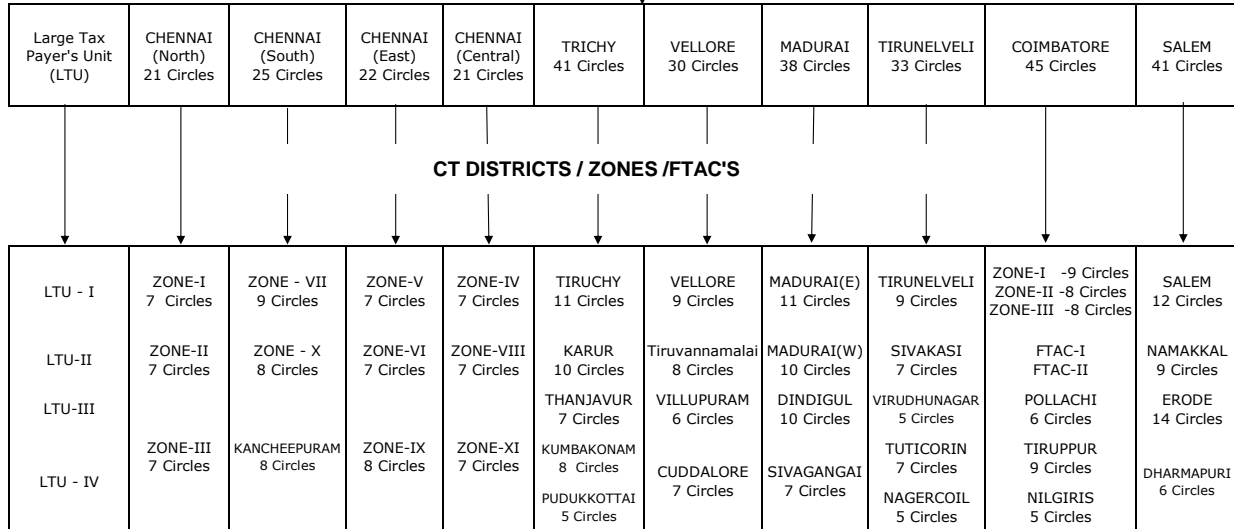
(ctd...)

TERRITORIAL JURISDICTION

DIVISION : SALEM		NO.OF CT DISTRICTS : 4 NOF ASSESSMENT CIRCLES : 41		
Assessment Circles	Salem	Namakkal	Erode	Dharmapuri
	SalemTown(North)	Namakkal(Town)	Park Road	Dharmapuri
	Salem (South)	Namakkal(Rural)	Brough Road	Krishnagiri
	Salem (West)	Tiruchengode (Town)	Nethaji Road	Harur
	Salem (Bazaar)	Tiruchengode (Rural)	Mettur Road	Hosur (North)
	Salem (Rural)	Athur (Town)	Erode (Rural)	Hosur (South)
	Shevapet (North)	Athur (Rural)	Bhavani	Palacode
	Shevapet (South)	Rasipuram	Perundurai	
	Leigh Bazaar	Sankagiri	Gobichetti-palayam	
	Guhai	Omalur	Sathyamangalam	
	Annadhanapatti		Dharapuram	
	Suramangalam		Kangeyam	
	Arisipalayam		Chithode	
			Sathy Road	
			Periya Agraharam	

TERRITORIAL DIVISIONS OF COMMERCIAL TAXES DEPARTMENT

TERRITORIAL DIVISIONS JC



Sl. No.	<u>48.TERRITORIAL DIVISIONS OF COMMERCIAL TAXES DEPARTMENT</u>										
1	2	3	4	5	6	7	8	9	10	11	12
I		DIVISIONS									
	Large Tax Payer's Unit	CHENNAI (North)	CHENNAI (South)	CHENNAI (East)	CHENNAI (Central)	TRICHY	VELLORE	MADURAI	TIRUNELVELI	COIMBATORE	SALEM
II		CT DISTRICTS / ZONES / FTACs									
	DC (LTU) - I	ZONE-I	ZONE - VII	ZONE-V	ZONE-IV	TIRUCHY	VELLORE	MADURAI(E)	TIRUNELVELI	ZONE-I, ZONE-II, ZONE-III	SALEM
	DC (LTU) - II	ZONE-II	ZONE - X	ZONE-VI	ZONE-VIII	KARUR	Tiruvannamalai	MADURAI(W)	SIVAKASI	FTAC-I FTAC-II	NAMAKKAL
	DC (LTU) -III	ZONE-III	KANCHEEPURAM	ZONE-IX	ZONE-XI	THANJAVUR	VILLUPURAM	DINDIGUL	VIRUDHUNAGAR	POLLACHI	ERODE
	DC (LTU) - IV					KUMBAKONAM	CUDDALORE	SIVAGANGAI	TUTICORIN	TIRUPPUR	DHARMAPURI
						PUDUKKOTTAI			NAGERCOIL	NILGIRIS	

49. JURISDICTION OF ENFORCEMENT WINGS.

SL.NO.	ENFORCEMENT DIVISION	CT TERRITORIAL DIVISIONS	CT DISTRICTS / ZONES
1	2	3	4
1	Chennai - I	Chennai (North)	Zones I, II, and III
		Chennai (Central)	Zones - IV, VIII and XI
2	Chennai - II	Chennai (South)	Zone - VII, X and Kancheepuram
		Chennai (East)	Zone - V, VI and IX
3	Coimbatore	Coimbatore	Zone - I, II & III of Coimbatore CT District and The Nilgiris & FTAC - I & II.
			Pollachi and Tiruppur C.T. Districts
4	Trichy	Trichy	Trichy (Town), Karur, Kumbakonam, Thanjavur and Pudukkottai

(ctd..)

JURISDICTION OF ENFORCEMENT WINGS.

SL.NO.	ENFORCEMENT DIVISION	CT TERRITORIAL DIVISIONS	CT DISTRICTS / ZONES
1	2	3	4
5	Vellore	Vellore	Vellore, Tiruvannamalai, Villupuram and Cuddalore
6	Madurai	Madurai	Madurai (East), Madurai (west), Sivagangai and Dindigul.
7	Tirunelveli	Tirunelveli	Tirunelveli, Tuticorin, Nagercoil, Sivakasi and Virudhunagar
8	Salem	Salem	Salem, Erode, Namakkal and Dharmapuri

ENFORCEMENT WING OF COMMERCIAL TAXES DEPARTMENT

JOINT COMMISSIONER

ISIC	CHENNAI-I	CHENNAI - II	TRICHY	VELLORE	MADURAI	TIRUNELVELI	COIMBATORE	SALEM
------	-----------	--------------	--------	---------	---------	-------------	------------	-------

DEPUTY COMMISSIONER

CHENNAI (N)	CHENNAI (C)	CHENNAI (S)	CHENNAI (E)	TRICHY	VILLUPURAM	MADURAI	TIRUNELVELI	COIMBATORE	SALEM
-------------	-------------	-------------	-------------	--------	------------	---------	-------------	------------	-------

ISIC wing mainly co-ordinates with the officers of other states to curtail evasion of tax on inter-state transaction and exchanges date with them for further processing to arrest tax evasion.	A.C (HQ)	*	*	*	A.C. Kumbakonam	A.C Vellore	A.C (H.Q)	A.C (HQ)	A.C Pollachi	A.C Erode
	Groups including Roving Squads	Groups including Roving Squads	Groups including Roving Squads	Groups including Roving Squads	A.C Karur	Groups including Roving Squads	A.C Dindigul	A.C Tuticorin	Groups including Roving Squads	A.C Namakkal
	Check Points	Check Points	Check Points	Check Points	A.C Thanjavur	Check Posts	Groups including Roving Squads	A.C Nagarcoil	Check Posts	A.C Dharma puri
	Check Posts	Check Posts	Check Posts	Check Posts	Groups including Roving Squads	Check Posts	A.C Virudhunagar	Groups including Roving Squads Check Points Tuticorin Port Trust Check Posts	Check Posts	Groups including Roving Squads Check Posts

* Under the direct control of JC(Enf) I & II Chennai, Madurai and Coimbatore there is one AC(Central Enforcement Wing)

50.ENFORCEMENT WING OF COMMERCIAL TAXES DEPARTMENT

1	2	3	4	5	6	7	8	9	10
ENFORCEMENT DIVISIONS									
CHENNAI-I		CHENNAI - II		TRICHY	VELLORE	MADURAI	TIRUNELVELI	COIMBATORE	SALEM

CT TERRITORIAL DIVISIONS

CHENNAI (N)	CHENNAI (C)	CHENNAI (S)	CHENNAI (E)	TRICHY	VELLORE	MADURAI	TIRUNELVELI	COIMBATORE	SALEM
CT DISTRICTS / ZONES									
Zone-I	Zone-IV	Zone-VII	Zone-V	Trichy (Town)	Vellore	Madurai (E)	Tirunelvelil	Zones - I to III	Salem
Zone-II	Zone-VIII	Zone-X	Zone-VI	Karur	Thiruvan- namalai	Madurai (W)	Tuticorin	Pollachi	Dharma- puri
Zone-III	Zone-XI	KANCHEEPU RAM	Zone-IX	Thanjavur	Villupuram	Dindugul	Nagercoil	Tirupur	Erode
				Kumba- konam	Cuddalore	Sivagangai	Virudunagar	The Nilgiris	Nama- kkal
				Pudukottai			Sivakasi	FTAC I and II	

51. JURISDICTION FOR APPEALS

Sl.No.	Head Quarters	Designation / Constitution	Jurisdiction (Assessment Circles unless otherwise specified)
1	2	3	4
1	Kuralagam Annexe, Chennai-600108	Appellate Deputy Commissioner (CT) - I, Chennai	Harbour - I to V, Esplanade - I & II, Rattan Bazaar, Park Town - I & II, Moore Market(North & South), Evening Bazaar, Pedunaickenpet(South)
2	- do -	Appellate Deputy Commissioner (CT) -II, Chennai	Sowcarpet - I to III, Godown Street, Kothavalchavadi, Loansquare - I & II, Tondaiarpeta, Washermentpet - I & II, Royapuram, Vallalar Nagar, Mannady East & West, Pedunaickenpet(North)
3	- do -	Appellate Deputy Commissioner (CT) - III, Chennai	Periyamet, Veppery, Egmore - I & II, Nungambakkam, Choolai, Purasawalkam, Vadapalani - I & II, T.Nagar(North, South & East) and Nandhanam
4	- do -	Appellate Deputy Commissioner (CT) - IV, Chennai	Annasalai - I to III, Chintadripeta, Triplicane, Chepauk, Ice House, Alwarpet, Mylapore, Luz, Royapettah and Mandaveli.
5	C.T.Buildings, Collectorate Compound, Kancheepuram - 631501	Appellate Deputy Commissioner (CT) - V, at Kancheepuram (with the status quo of two days camp in Chennai for hearing of appeals)	Tambaram - I & II, Guindy, Adyar - I & II, Alandur, Thiruvannamiyur, Velachery and all Assessment Circles in Chengalpattu.
6	Kuralagam Annexe, Chennai-600108	Appellate Deputy Commissioner (CT) - VI, Chennai	Ayanavaram, Amaintthakarai, Kilpauk, Sengundram, Thiruvotriyur, Avadi, Ashoknagar, Porur, Perambur - I & II, Saligramam, Koyambedu, Ambattur and Villivakkam.
7	- do -	Appellate Deputy Commissioner (CT) -VII, Chennai	Cases Transferred by the Chairman, STAT from other Appellate Deputy Commissioners of Chennai
8	4, Fort Round Rd, Vellore. 632 001.	Appellate Deputy Commissioner (CT) , Vellore	All Assessment circles in Vellore and Tiruvannamalai C.T.Districts.
9	C.T.Buildings, Sub-Jail Road, Manjakuppam, Cuddalore-607001	Appellate Deputy Commissioner (CT), Cuddalore.	All Assessment circles in Cuddalore and Villupuram C.T.Districts, Sirkali, Mayiladuthurai - I & II and Nannilam in Kumbakonam C.T.District.
			(ctd...)

JURISDICTION FOR APPEALS

Sl.No.	Head Quarters	Designation / Constitution	Jurisdiction (Assessment Circles unless otherwise specified)
10	Collectorate Compound, Contonment, Tiruchirapalli	Appellate Deputy Commissioner (CT), Trichirapalli.	All Assessment circles in Trichy and Karur C.T.Districts.
11	20 / 3, Sachidananda Moopanan Road, Thanjavur, 613 001.	Appellate Deputy Commissioner (CT), Thanjavur	All Assessment circles in Thanjavur C.T.District, Kumbakonam - I to IV, Thiruvavur, Nagapattinam, Kumbakonam C.T.District, Aranthangi, Pudukottai I & II in, Pudukottai C.T.District.
12	C.T.Buildings, Dr.S.V.K.S.Thangaraj Salai, Madurai-625 020	Appellate Deputy Commissioner (CT), Madurai (North).	Melakopuram street, Vengalacadai street, Thallakulam, Chokkikulam, Tamil sangam Circle, Nethaji circle, Melur, Dindigul I-V, Palani I & II, Dindigul Rural, Nilakottai, Kodaikanal and Assistant Commr.(Enft) Madurai
13	C.T.Buildings, Dr.S.V.K.S.Thangaraj Salai, Madurai-625 020.	Appellate Deputy Commissioner (CT), Madurai (South).	Melaveliveedhi, Kamarajar Salai, South Avani Moola street, Chithrakara street, Thirumangalam, Mahal Assessment Circle, Munisalai Road assessment Circle, Theni-I&II, Bodinayakanur, Uthamapalayam, Periyakulam, Madurai (Rural & South) Circle, Assistant Commissioner (Enforcement) Madurai.
14	C.T.Buildings, Madurai Road, Virudhunagar. 626 001.	Appellate Deputy Commissioner (CT), Virudhunagar.	Virudhunagar I to III, Srivilliputhur, Sattur, Aruppukottai, Karaikudi, Thirupathur, Sivagangai, Devakottai, Paramakudi, Ramnad, Mudukulathur, Sivakasi Town I & II, Sivakasi Rural I & II, Rajapalayam.
15	C.T.Buildings, Ist Floor, Reserve Line Road, Palayamkottai, Tirunelveli-627002.	Appellate Deputy Commissioner (CT), Tirunelveli	All Assessment circles in Tirunelveli, Kanniyakumari and Tuticorin C.T.Districts.
16	C.T.Buildings, Balasundaram Chettiar Road, Coimbatore.641 018.	Appellate Deputy Commissioner (CT),(Main) Coimbatore	R.S.Puram (East), R.S.Puram (West), Mettupalayam Road, Ram Nagar, Saibaba colony,Thudiyalur, Mettupalayam, Gandhipuram, Ganapathy, Dr.Nanjappa Road, Pappanaickenpalayam,Avarampalayam, Udagamandalam(South) & (North), Gudalur, Kothagiri and Coonor.

(ctd...)

JURISDICTION FOR APPEALS

Sl.No.	Head Quarters	Designation / Constitution	Jurisdiction (Assessment Circles unless otherwise specified)
17	C.T.Buildings, Balasundaram Chettiar Road, Coimbatore 641 018	Appellate Deputy Commissioner (CT),(Addl.) Coimbatore	R.G.Street, B.B.Street, Avinashi Road, Pothanur, Perur, Singanallur, N.H.Road, Trichy Road, Oppanakara Street, Peelamedu (North) & (South) and Avinashi.
18	C.T.Buildings, Palghat Road,Pollachi - 642001	Appellate Deputy Commissioner (CT), Pollachi.	All Assessment circles in Pollachi C.T.Districts.
19	71, Poongundranar St,Karungalpalayam Erode. 638 001.	Appellate Deputy Commissioner (CT), Erode.	Erode (North), (South), (Central), (East), & (Rural) Chithode at Erode, Perundurai, Bhavani, Gopichettipalayam, Sathyamangalam, Dharapuram, Kangayam, Tiruchengodu (Town) and (Rural) and (Rural) and Sankari Assessment Circles.
20	35/19,Car Street, P.T.K.Complex, Salem 636 001	Appellate Deputy Commissioner (CT),Salem.	All Assessment circles in Salem, Namakkal (Except Sankari, Tiruchengode Town and Rural) and Dharmapuri C.T.Districts.
21	Wavoo Complex, 3rd Floor,191, N.S.C. Bose Road, Chennai - 1.	Joint Commissioner (CT),Appeals, Chennai.	Large Tax Payers Unit Deputy Commissioners (I to IV) Chennai.
22	C.T.Buildings, Dr.Balasundaram Chettiar Road, Coimbatore-641018.	Joint Commissioner (CT),Appeals, Coimbatore.	FTAC I & II, Coimbatore

(ctd...)

JURISDICTION FOR APPEALS

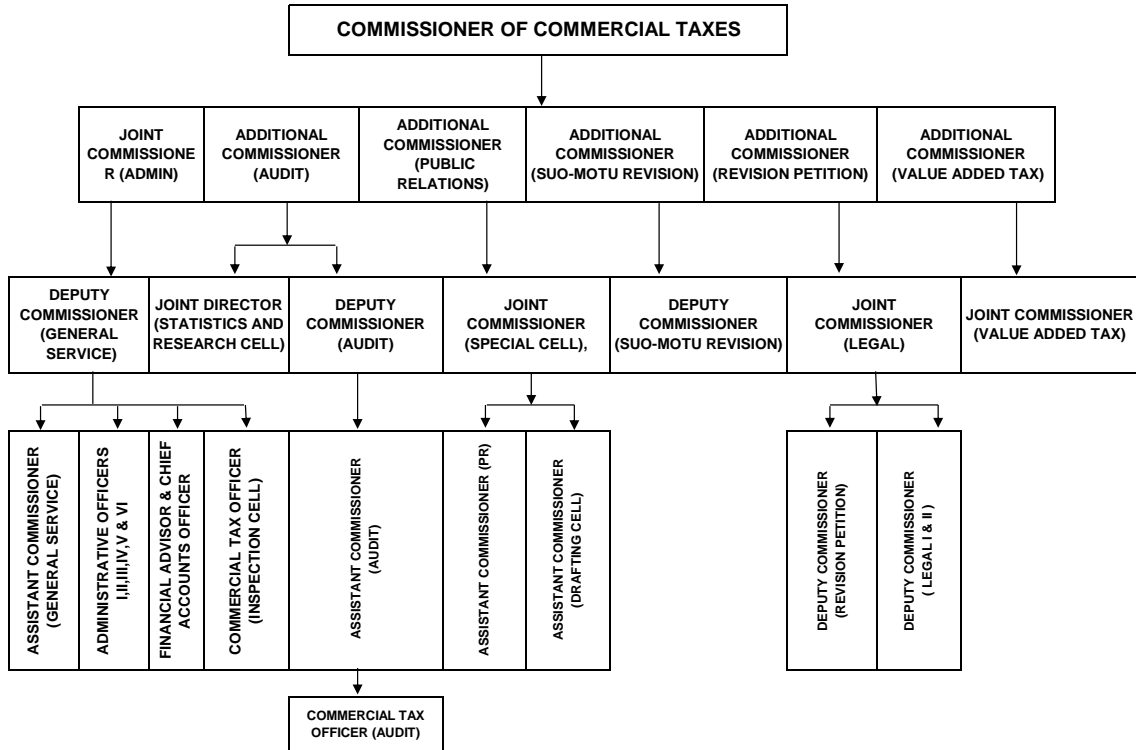
Sl.No.	Head Quarters	
<u>II. SECOND APPEAL TO SALES TAX APPELLATE TRIBUNAL.</u>		
23	Main Bench, City Civil Court Buildings, High Court Compound, Chennai - 600 104.*	All Appeals and applications for review and enhancement petitions arising from Joint Commissioner (CT), (Appeal) Chennai, Appellate Deputy Commissioner (CT) - IV, V, VI, VII, Kancheepuram, Cuddalore, Vellore, Trichy and Thanjavur.
24	Addl. Bench, City Civil Court Buildings, High Court Compound, Chennai - 600104.**	All Appeals and applications for review and enhancement petitions arising from Appellate Deputy Commissioner (CT) - I, II and III.
25	Addl. Bench, Madurai, S.K.S. Thangaraj Salai, Madurai -625020.**	All Appeals and applications for review and enhancement petitions arising Appellate Deputy Commissioner (CT) - Madurai (North), Madurai (South), Virudhunagar and Tirunelveli.
26	Addl. Bench at Coimbatore Balasundaram Chettiar Road, Jail Compound, Coimbatore.641018.**	All Appeals and applications for review and enhancement petitions arising from Joint Commissioner (CT), (Appeal) Coimbatore, Appellate Deputy Commissioner (CT) -Coimbatore Main, Coimbatore Additional, Pollachi, Erode and Salem.

Note * 1. Chairman - In the cadre of District Judge.

2. Second Member - An Officer of the Indian Revenue Service (or) in the cadre of Assistant Commr. of Income -Tax (or) a Chartered Accountant having not less than 5 years practical perience and being a Member of the Institute of Chartered Accountant of India.
3. Departmental Member(Main Bench) - In the cadre of Additional Commissioner (CT)

** 1. Addl. Departmental Member(Addl.Bench) - In the rank of Joint Commissioner (CT), 2. Addl. Judicial Member - In the rank of Sub - Judge.1.

HIERARCHY AT STATE HEADQUARTERS



52. PAY SCALES OF OFFICERS AND STAFF

Sl.No	Name of the Post	Scale of Pay (Rs.)	Grade Pay	Pay Band	Cadre Strength
1	2	3	4	5	6
	<u>OFFICERS</u>				
1	Commissioner of Commercial Taxes	I.A.S. Cadre			1
2	Joint Commissioner (Admn)	I.A.S. Cadre			1
3	Additional Commissioner (CT)	37400 - 67000	8800	P.B - 4	7
4	Joint Commissioner (CT)	15600 - 39100	7600	P.B - 3	33
5	Joint Director of Statistics	15600 - 39100	7600	P.B - 3	1
6	Deputy Commissioner (GS)	15600 - 39100	7600	P.B - 3	1
7	Financial Advisor and CAO	15600 - 39100	7600	P.B - 3	1
8	Legal Officer	15600 - 39100	7600	P.B - 3	1
9	Deputy Commissioner (CT)	15600 - 39100	6600	P.B - 3	101
10	Assistant Commissioner (GS)	15600 - 39100	6600	P.B - 3	1
11	System Analyst	15600 - 39100	6600	P.B - 3	1
12	Assistant Director of Statistics/ Lecturer	15600 - 39100	5400	P.B - 3	1
13	Programmer	15600 - 39100	5400	P.B - 3	4
14	Administrative Officer	15600 - 39100	5400	P.B - 3	6
15	Public Relations Officer	15600 - 39100	5400	P.B - 3	1
16	Assistant Commissioner (C.T)	15600 - 39100	5400	P.B - 3	352
17	Commercial Tax Officer	9300 - 34800	4900	P.B - 2	679
18	TNMS /Superintendent	9300 - 34800	4800	P.B - 2	31
19	Deputy Commercial Tax Officer	9300 - 34800	4800	P.B - 2	1309
20	Deputy Programmer	9300 - 34800	4600	P.B - 2	4
21	Statistical Officer	9300 - 34800	4600	P.B - 2	1
22	Junior Research Officer	9300 - 34800	4600	P.B - 2	10

(ctd...)

PAY SCALES OF OFFICERS AND STAFF

Sl.No	Name of the Post	Scale of Pay (Rs.)	Grade Pay	Pay Band	Cadre Strength
1	2	3	4	5	6
23	Assistant Programmer	9300 - 34800	4400	P.B - 2	18
24	Statistical Inspector	9300 - 34800	4400	P.B - 2	36
25	Stenographer - Grade I	9300 - 34800	4300	P.B - 2	1
26	Steno grapher - Grade II	9300 - 34800	4200	P.B - 2	7
27	Service Engineer	5200 - 20200	2800	P.B - 1	1
28	Junior Draughtsman	5200 - 20200	2800	P.B - 1	1
29	Assistant / Sales Tax Collection Inspector / Gujarathi Assistant / System Assistant	5200 - 20200	2800	P.B - 1	2447
30	Stenographer - Grade III	5200 - 20200	2800	P.B - 1	127
31	Assistant Statistical Investigator	5200 - 20200	2400	P.B - 1	2
32	Junior Assistant	5200 - 20200	2400	P.B - 1	1407
33	Typist	5200 - 20200	2400	P.B - 1	652
34	Driver	5200 - 20200	2400	P.B - 1	229
35	Telephone Operator (Junior Assistant)	5200 - 20200	2000	P.B - 1	1
36	Service Assistant	5200 - 20200	1900	P.B - 1	2
37	Telephone Operator (RC)	4800 - 10000	1400	P.B - 1A	4
38	Record Clerk	4800 - 10000	1400	P.B - 1A	675
39	Lift Operator	4800 - 10000	1400	P.B - 1A	11
40	Office Assistant	4800 - 10000	1300	P.B - 1A	2172
41	Duffedar	4800 - 10000	1300	P.B - 1A	2
42	Gardener	4800 - 10000	1300	P.B - 1A	1
43	Masalchi / Watchman /Watchman cum-Sweeper/Guard/Water Carrier	4800 - 10000	1300	P.B - 1A	81
44	Load Man	4800 - 10000	1300	P.B - 1A	10
Total					10434