

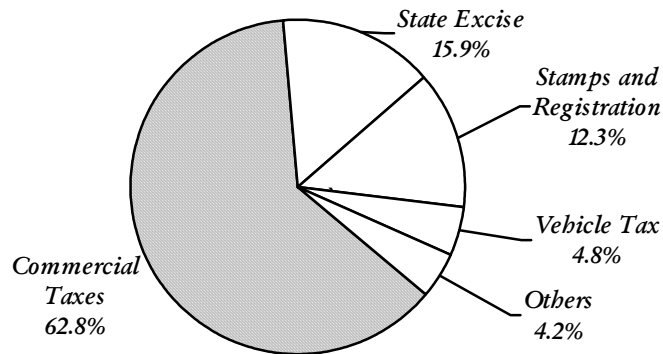
For Official Use Only



COMMERCIAL TAXES DEPARTMENT

AT A GLANCE

2008-09



COMMISSIONER OF COMMERCIAL TAXES
(Statistics and Research Cell)
CHENNAI - 600 005

COMMERCIAL TAXES DEPARTMENT

AT A GLANCE

2008 - 09

Compiled by
STATISTICS AND RESEARCH CELL
COMMERCIAL TAXES DEPARTMENT
CHENNAI - 600 005

PREFACE

The booklet " Commercial Taxes Department At A Glance 2008-09 " is exclusively for official use. This Booklet comprises of Commercial Taxes Revenue under all Acts, details of Assesseees, performance of the Divisions / Enforcement wing, Tax Rates of selected commodities and important activities of the Department. The administrative set up in the State Headquarters and the sub-ordinate offices of the Commercial Taxes Department has also been presented.

The details given in this booklet has been collected from the field level Officers of this Department. Particulars in respect of Net State Domestic Product have been collected from the Department of Economics and Statistics, Chennai-6, and the Monthly RBI Bulletin.

I would like to record my appreciation for collection and compilation of the details by the officer and staff of the Statistics and Research Cell.

I solicit suggestions for making the book more useful.

Ezilagam
Chennai - 600 005.
Dated: 29.07.09

(Sd) T.Jacob,
Principal Secretary/
Commissioner of Commercial Taxes

| Sl.No. | <u>CONTENT</u> | Page No. |
|---------------|--|-----------------|
| 1. | Acts administered by the C.T. Department | 1 |
| 2. | Registered Dealers in Tamil Nadu | 2 |
| 3. | Divisionwise Registered Dealers | 4 |
| 4. | State Tax Revenue Receipts | 6 |
| 5. | Divisionwise Revenue Receipts under all Acts | 10 |
| 6. | Divisionwise Tax Revenue Receipts | 12 |
| 7. | Divisionwise Distribution of VAT Act Assesseees by Turnover slabs | 14 |
| 8. | Divisionwise Distribution of VAT Act Non-Assesseees by Turnover slabs | 16 |
| 9. | Divisionwise Distribution of VAT Act Assesseees by Tax slabs | 18 |
| 10. | Distribution of Assesseees by Turnover and Tax slabs | 20 |
| 11. | Distribution of Tax Revenue by Turnover and Tax slabs | 23 |
| 12. | Divisionwise Number of Assesseees and Tax Revenue | 26 |
| 13. | Slabwise Assesseees and Tax Revenue under VAT Act | 27 |
| 14. | Divisionwise Slabwise Assesseees and Tax Revenue | 28 |
| 15. | Divisionwise Turnover Slabwise Assesseees and Tax Revenue (VAT Act) | 34 |
| 16. | C.T.District / Zonewise number of Assesseees and Tax Revenue (VAT Act) | 40 |
| 17. | Divisionwise number of Assessmentes finalised | 44 |

| Sl.No. | <u>CONTENT</u> | Page No. |
|---------------|---|-----------------|
| 18. | Receipts and Expenditure of C.T. Department | 45 |
| 19. | Number of Cinema Houses and ET collected | 46 |
| 20. | C.T.District / Zonewise number of Cinema Houses and Cable TV Operators and ET collected | 48 |
| 21. | Tax Rates under Tamil Nadu Entertainment Act 1939 | 52 |
| 22. | VAT - Tax Ratewise selected commodities in 2008-09 | 54 |
| 23. | Checkposts | 61 |
| 24. | Year wise Performance of the Enforcement wings | 64 |
| 25. | Division wise Performance of Enforcement wings | 66 |
| 26. | CT Revenue and Net State Domestic Product (NSDP) | 69 |
| 27. | Statewise Sales Tax and State's Own Tax Revenue | 70 |
| 28. | Sales Tax and Gross State Domestic Product (GSDP) | 73 |
| 29. | Jurisdiction of Territorial wings | 76 |
| 30. | Jurisdiction of Enforcement wings | 85 |
| 31. | Jurisdiction for appeals | 88 |
| 32. | Officers and Staff strength of the Commercial Taxes Department | 95 |
| 33. | Officers of the Commercial Taxes Department | 99 |
| 34. | Commercial Taxes Department e - mail Addresses | 108 |

IMPORTANT INDICATORS
FOR TAMIL NADU (2008- 09)

| | VAT | CST |
|--------------------------------------|------|------|
| Registered Dealers (No. in lakhs) | 4.97 | 3.08 |
| Assessees (No. in lakhs) | 2.05 | 0.40 |
| % of Assessees to registered dealers | 41 | 13 |

Tax revenue

(Rs.in Crores)

| | |
|--|----------|
| VAT TAX | 19304.78 |
| General Sales Tax | 292.45 |
| Central Sales Tax | 1653.03 |
| Betting Tax | 6.12 |
| Entertainment Tax | 12.24 |
| Luxury Tax | 170.15 |
| Entry Tax | 996.30 |
| TDS | 135.05 |
| Total | 22570.12 |
| Total Own Tax Revenue of the State (In Crores) | 35949 |
| % of Sales Tax to State's Own Tax Revenue | 62.8 |
| Assessments finalized (No.in lakhs) | 2.34 |

TOTAL TURNOVER RANGE IN 2008-09 (VAT ACT ONLY)

| TOTAL TURNOVER RANGE | NO. OF ASSESSEES | % | TAX REVENUE (Rs.In Crores) | % |
|----------------------|------------------|---------------|------------------------------|---------------|
| Rs. 0 - 3 Lakhs | 58887 | 28.68 | 9.78 | 0.05 |
| Rs. 3 - 4 Lakhs | 6949 | 3.38 | 5.32 | 0.03 |
| Rs. 4 - 5 Lakhs | 5935 | 2.89 | 5.93 | 0.03 |
| Rs. 5 - 10 Lakhs | 22049 | 10.74 | 34.64 | 0.18 |
| Rs.10 - 25 Lakhs | 35269 | 17.18 | 110.85 | 1.57 |
| Rs.25 - 50 Lakhs | 25619 | 12.48 | 165.9 | 0.85 |
| Rs.50 - 75 Lakhs | 11238 | 5.47 | 136.12 | 0.70 |
| Rs.75 - 100 Lakhs | 7136 | 3.48 | 121.57 | 0.63 |
| Rs. 1 - 10 Crores | 28062 | 13.67 | 1482.98 | 7.63 |
| Rs.10 - 50 Crores | 3488 | 1.70 | 1566.88 | 8.07 |
| Rs.50 - 100 Crores | 356 | 0.17 | 706.52 | 3.64 |
| Rs.100 -200Crores | 172 | 0.08 | 1084.21 | 5.58 |
| Rs.200 -300Crores | 58 | 0.03 | 531.54 | 2.74 |
| Rs.300 -400Crores | 26 | 0.01 | 249.61 | 1.28 |
| Rs.400 -500Crores | 19 | 0.01 | 893.99 | 4.60 |
| Rs.500Crs&above | 58 | 0.03 | 12182.21 | 62.72 |
| TDS Collection | - | - | 135.05 | 0.70 |
| TOTAL | 205319 | 100.00 | 19423.10 | 100.00 |

TAX SLAB RANGE IN 2008-09 (VAT ACT ONLY)

| TOTAL TAX SLAB RANGE | NO. OF ASSESSEES | % | TAX REVENUE (Rs.In Crores) | % |
|----------------------|------------------|---------------|------------------------------|---------------|
| Below Rs. 1000 | 85123 | 41.46 | 0.45 | - |
| Rs. 1000- 5000 | 20773 | 10.12 | 7.38 | 0.04 |
| Rs. 5000-10000 | 17062 | 8.31 | 15.13 | 0.08 |
| Rs. 10000-50000 | 40146 | 19.55 | 119.58 | 0.61 |
| Rs. 50000- 1Lakh | 13267 | 6.46 | 117.68 | 0.61 |
| Rs. 1- 5 Lakhs | 19385 | 9.44 | 542.06 | 2.79 |
| Rs. 5- 10 Lakhs | 4039 | 1.97 | 351.54 | 1.81 |
| Rs.10- 50 Lakhs | 4065 | 1.98 | 1077.46 | 5.55 |
| Rs.50-100 Lakhs | 659 | 0.32 | 572.25 | 2.95 |
| Rs. 1- 10 Crores | 691 | 0.34 | 2292.18 | 11.80 |
| Rs. 10 -20Crores | 43 | 0.02 | 712.64 | 3.67 |
| Rs. 20 -30Crores | 22 | 0.01 | 539.80 | 2.78 |
| Rs. 30 -40Crores | 12 | 0.01 | 421.07 | 2.17 |
| Rs. 40 -50Crores | 7 | - | 300.21 | 1.54 |
| Rs.50Crs&above | 25 | 0.01 | 12218.62 | 62.91 |
| TDS Collection | - | - | 135.05 | 0.69 |
| TOTAL | 205319 | 100.00 | 19423.10 | 100.00 |

Month wise Revenue Trend

Rs.in crores

| 2007-08 | | 2008-09 | | Growth in % |
|--------------|--------------------|--------------|--------------------|--------------|
| MONTH | Revenue collection | Month | Revenue collection | |
| April,07 | 1615.75 | April,08 | 1902.00 | 17.72 |
| May,07 | 1531.82 | May,08 | 1803.79 | 17.75 |
| June,07 | 1614.67 | June,08 | 1903.62 | 17.90 |
| July 07 | 1652.28 | July,08 | 1908.06 | 15.48 |
| August,07 | 1654.12 | August,08 | 1941.61 | 17.38 |
| September,07 | 1665.51 | September,08 | 1963.01 | 17.86 |
| October,07 | 1727.50 | October,08 | 2048.58 | 18.59 |
| November,07 | 1614.74 | November,08 | 1895.96 | 17.42 |
| December,07 | 1601.24 | December,08 | 1702.07 | 6.30 |
| January,08 | 1701.45 | January,09 | 1775.79 | 4.37 |
| Feburary,08 | 1690.17 | Feburary,09 | 1815.37 | 7.41 |
| March,08 | 1883.34 | March,09 | 1910.26 | 1.43 |
| Total | 19952.59 | Total | 22570.12 | 13.12 |

ACTI WISE REVENUE COLLECTION

(Rs.in crores)

| SI.No | Act | Revenue Collection | | Growth in % |
|-------|----------------------------|--------------------|-----------------|---------------|
| | | 2007-08 | 2008-09 | |
| 1 | Sales Tax under TNGST | 300.89 | 258.8 | -13.99 |
| 2 | Additional sales Tax | 9.04 | 5.26 | -41.81 |
| 3 | Surcharge | 0.02 | 0.00 | ----- |
| 3(a) | Additional Surcharge | 0.00 | 0.01 | ----- |
| 4 | others | 15.86 | 26.62 | 67.84 |
| 5 | Surcharge u/s 3(1) | 1.29 | 1.07 | -17.05 |
| 6 | Resale | 1.89 | 0.69 | -63.49 |
| 7 | TDS Collection - AG | 42.09 | ----- | ----- |
| 8 | TDS Collection – Chennai E | 57.84 | ----- | ----- |
| | TNGST Sub Total | 428.82 | 292.45 | -31.82 |
| 9 | VAT Goods | 7790.51 | 9038.10 | 16.01 |
| 10 | NON- VATGoods | 8668.18 | 10249.95 | 18.25 |
| 11 | TDS Collection - AG | ----- | 68.13 | ----- |
| 12 | TDS Collection – Chennai E | ----- | 66.92 | ----- |
| 13 | Others | 13.79 | 16.73 | 21.32 |
| | VAT Sub Total | 16472.48 | 19439.83 | 17.30 |
| 14 | Central Sales Tax | 1743.41 | 1653.03 | -5.18 |
| 15 | Entertainment Tax | 16.35 | 12.24 | -25.14 |
| 16 | Betting Tax | 6.35 | 6.12 | -3.62 |
| 17 | Luxury Tax | 159.73 | 170.15 | 6.52 |
| 18 | Advance Tax | ---- | ---- | ----- |
| 19(a) | Entry Tax on Goods | 73.99 | 8.90 | -87.97 |
| 19(b) | Entry Tax on Vehicles | 1051.36 | 987.40 | -6.08 |
| | Entry Tax Total | 1125.35 | 996.3 | -11.47 |
| | Total | 19952.59 | 22570.12 | 13.12 |

Divisionwise Revenue Collection

(Rs,in Crores)

| Sl.No | Division | Revenue Collection | | Growth in % |
|-------|-----------------------|--------------------|-----------------|--------------|
| | | 2007-2008 | 2008-2009 | |
| 1 | Chennai (N) | 2564.42 | 3056.04 | 19.17 |
| 2 | Chennai (S) | 6498.35 | 7600.76 | 16.96 |
| 3 | Chennai (E) | 1889.03 | 1993.58 | 5.53 |
| 4 | Chennai C) | 4648.66 | 5217.02 | 12.23 |
| 5 | Trichy | 659.12 | 684.19 | 3.80 |
| 6 | Vellore | 442.88 | 495.87 | 11.96 |
| 7 | Madurai | 403.81 | 416.19 | 3.07 |
| 8 | Thirunelveli | 350.04 | 444.90 | 27.10 |
| 9 | Coimbatore | 1703.51 | 1765.94 | 3.66 |
| 10 | Salem | 692.84 | 760.58 | 9.78 |
| | TDS/Chennai(E) | 57.84 | 66.92 | 15.70 |
| | TDS -A.G., | 42.09 | 68.13 | 61.87 |
| | Grand Total | 19952.59 | 22570.12 | 13.12 |

TREND IN REVENUE COLLECTION

| Year | Revenue Collections (Rs.in Crores) | Growth rate |
|-------------|---|--------------------|
| 2003-2004 | 11,757 | 15.27% |
| 2004-2005 | 13,908 | 18.29% |
| 2005-2006 | 16,615 | 19.47% |
| 2006-2007 | 19,217 | 15.66% |
| 2007-2008 | 19,952 | 3.83% |
| 2008-2009 | 22,570 | 13.12% |

ACT WISE REVENUE COMPARISION WITH PREVIOUS YEARS

(Rs.in Crores)

| SL NO | Acts | 2003-04 | 2004-05 | 2005-06 | 2006-07 | 2007-08 | 2008-09 |
|-------|-------------------------------|--------------|--------------|--------------|--------------|--------------|--------------|
| 1 | TNGST | 9790 | 11462 | 13652 | 13416 | 429 | 293 |
| 2 | TN VAT | ... | ... | ... | 2290 | 16472 | 19440 |
| 3 | CST | 1186 | 1495 | 1799 | 2033 | 1744 | 1653 |
| 4 | Entertainment Tax | 75 | 59 | 44 | 25 | 16 | 12 |
| 5 | Betting Tax | 5 | 6 | 6 | 6 | 6 | 6 |
| 6 | Luxury Tax | 63 | 78 | 92 | 128 | 160 | 170 |
| 7 | Entry Tax on Vehicles & Goods | 638 | 808 | 1016 | 1319 | 1125 | 996 |
| | Total | 11757 | 13908 | 16609 | 19217 | 19952 | 22570 |

1. ACTS ADMINISTERED BY THE COMMERCIAL TAXES DEPARTMENT - 2008-09

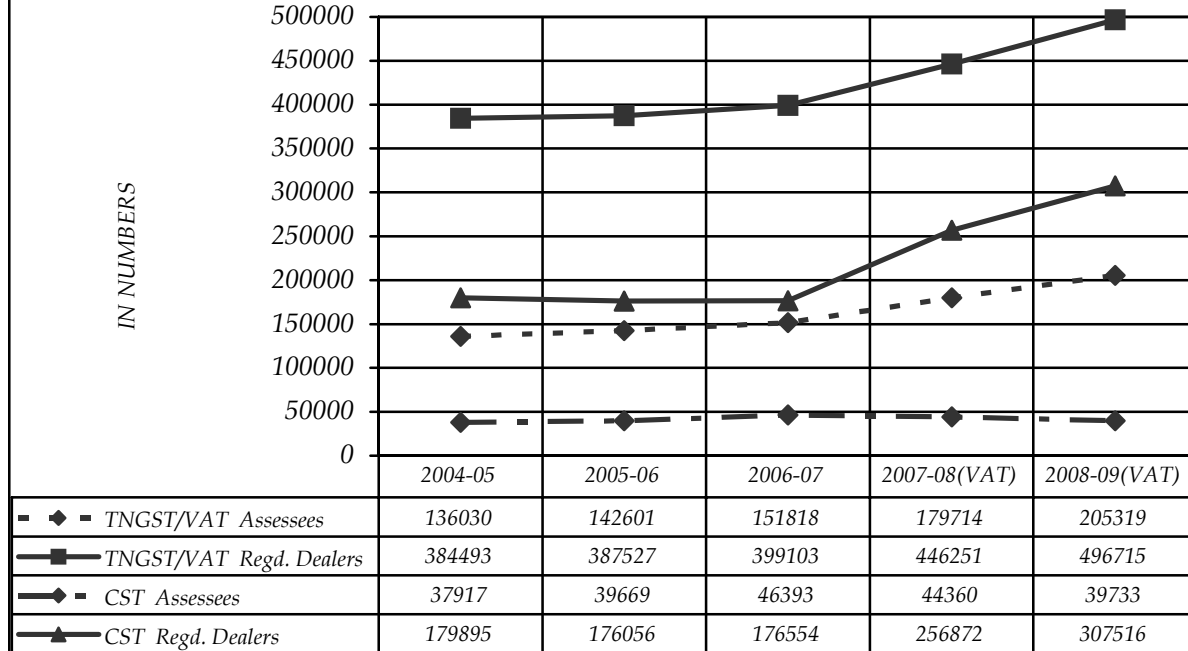
- 1. Tamilnadu General Sales Tax Act 1959**
- 2. Tamilnadu Additional Sales Tax Act 1970**
- 3. Central Sales Tax Act 1956**
- 4. Tamilnadu Entertainment Tax Act 1939**
- 5. Tamilnadu Advertisements Tax Act 1983.**
- 6. Tamilnadu Betting Tax Act 1935**
- 7. Tamilnadu Tax on Luxuries Act 1981**
- 8. Tamilnadu Tax on Entry of Motor Vehicles into Local Areas Act 1990**
- 9. Tamilnadu Tax on Entry of Goods in to Local Areas Act 2001**
- 10. Value Added Tax Implemented from 1.1.2007**

2. REGISTERED DEALERS IN TAMIL NADU

(In No.)

| Category | 2004-05 | | 2005-06 | | 2006-07 | | 2007-08 | | 2008-09 | | |
|-------------------------------|---------|------|---------|------|---------|-----|-------------------|------|---------|------|--|
| | No. | % | No. | % | No. | % | No. | % | No. | % | |
| <u>TNGST</u> | | | | | | | <u>VAT</u> | | | | |
| Regd. Dealers | 384493 | 100 | 387527 | 100 | 399103 | 100 | 446251 | 100 | 496715 | 100 | |
| Assessees | 136030 | 35 | 142601 | 37 | 151818 | 38 | 179714 | 40 | 205319 | 41 | |
| Non - Assessees | 248463 | 65 | 244926 | 63 | 247285 | 62 | 266537 | 60 | 291396 | 59 | |
| % increase over previous year | | 1.2 | | 0.8 | | 3.0 | | 11.8 | | 11.3 | |
| <u>CST</u> | | | | | | | | | | | |
| Regd. Dealers | 179895 | 100 | 176056 | 100 | 176554 | 100 | 256872 | 100 | 307516 | 100 | |
| Assessees | 37917 | 21 | 39669 | 23 | 46393 | 26 | 44360 | 18 | 39733 | 13 | |
| Non - Assessees | 141978 | 79 | 136387 | 77 | 130161 | 74 | 212512 | 82 | 267783 | 87 | |
| % increase over previous year | | 13.3 | | -2.1 | | 0.3 | | 45.5 | | 19.7 | |

*REGISTERED DEALERS AND NUMBER OF
ASSEESSEES IN TAMIL NADU (2004-05 TO 2008-09)*

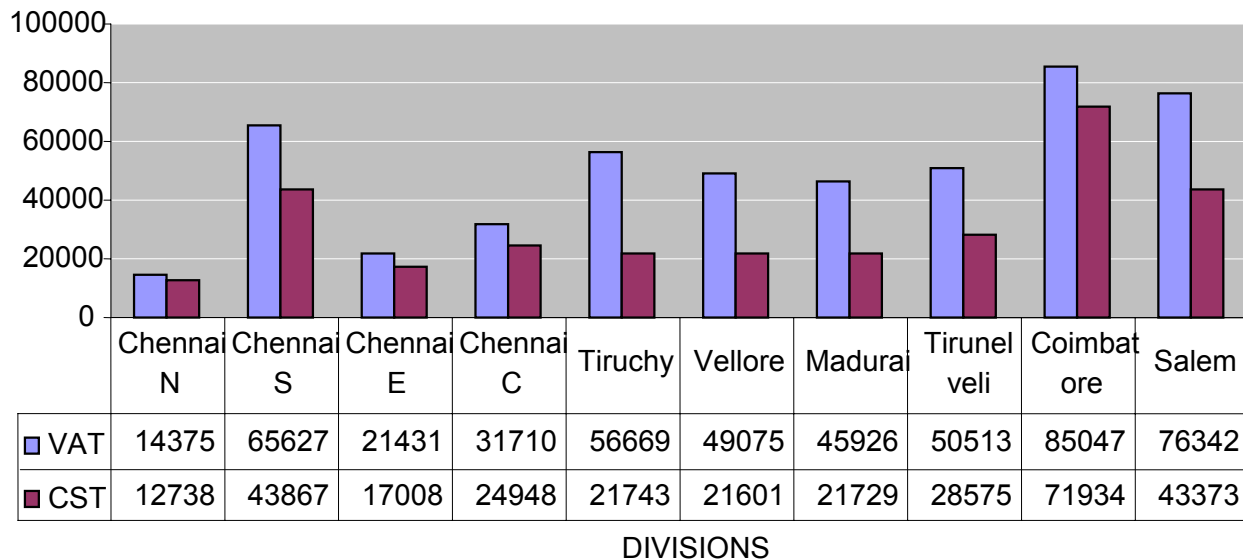


3. DIVISIONWISE REGISTERED DEALERS IN 2008-09

(In No.)

| Category | Chen nai (N) | Chen nai (S) | Chen nai (E) | Chen nai (C) | Tiru chy | Vell ore | Madu rai | Tiru nel veli | Coim bat ore | Sal em | STATE |
|-------------------------------------|--------------------|--------------------|--------------------|--------------------|-------------|-------------|-------------|---------------------|--------------------|-----------|--------|
| <u>VAT</u> | | | | | | | | | | | |
| Regd. Dealers | 14375 | 65627 | 21431 | 31710 | 56669 | 49075 | 45926 | 50513 | 85047 | 76342 | 496715 |
| Assesseees | 11079 | 32039 | 12735 | 18052 | 16427 | 11280 | 20757 | 17364 | 41966 | 23620 | 205319 |
| Non- Assesseees | 3296 | 33588 | 8696 | 13658 | 40242 | 37795 | 25169 | 33149 | 43081 | 52722 | 291396 |
| % to State | 2.89 | 13.21 | 4.32 | 6.38 | 11.41 | 9.88 | 9.25 | 10.17 | 17.12 | 15.37 | 100.00 |
| % of Assesseees to Regd. dealers | 77.07 | 48.82 | 59.42 | 56.93 | 28.99 | 22.99 | 45.20 | 34.38 | 49.34 | 30.94 | 41.34 |
| <u>CST</u> | | | | | | | | | | | |
| Regd. Dealers | 12738 | 43867 | 17008 | 24948 | 21743 | 21601 | 21729 | 28575 | 71934 | 43373 | 307516 |
| Assesseees | 4811 | 6411 | 3492 | 4961 | 1120 | 875 | 2231 | 3786 | 8630 | 3416 | 39733 |
| Non- Assesseees | 7927 | 37456 | 13516 | 19987 | 20623 | 20726 | 19498 | 24789 | 63304 | 39957 | 267783 |
| % to State | 4.14 | 14.27 | 5.53 | 8.11 | 7.07 | 7.02 | 7.07 | 9.29 | 23.39 | 14.11 | 100.00 |
| % of Assesseees to Regd Dealers | 37.77 | 14.61 | 20.53 | 19.89 | 5.15 | 4.05 | 10.27 | 13.25 | 12.00 | 7.88 | 12.92 |

DIVISIONWISE REGISTERED DEALERS IN 2008-09 (VAT&CST)

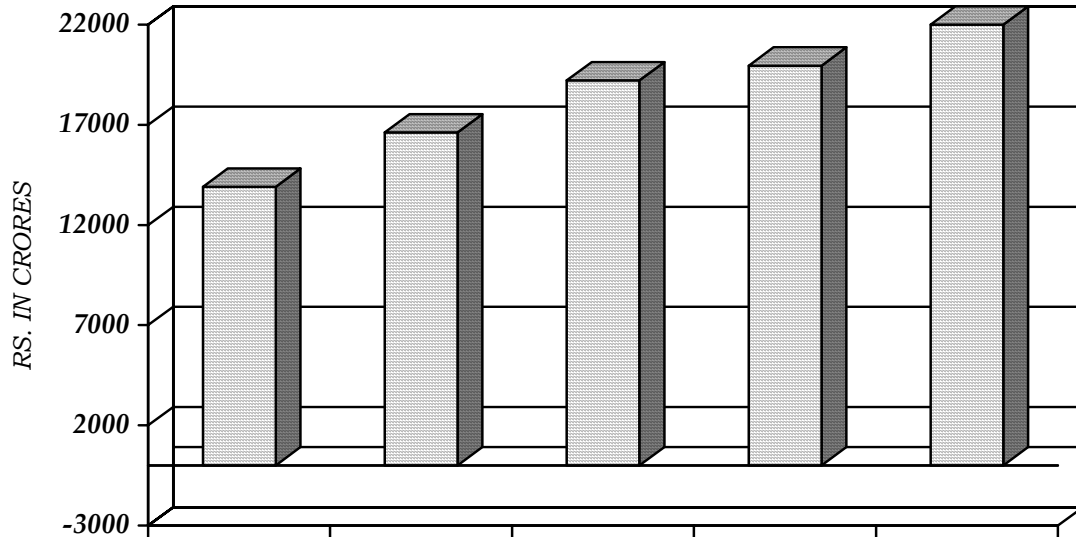


4. STATE TAX REVENUE RECEIPTS

| | | | | | | (Rs.In Crores) |
|---|--------------|--------------|--------------|--------------|--------------|----------------|
| Heads | 2004-05 | 2005-06 | 2006-07 | 2007-08 | 2008-09 | % |
| (1) | (2) | (3) | (4) | (5) | (6) | (7) |
| (i) Commercial Taxes Department's Tax Revenue Receipts | | | | | | |
| Sales Tax Under TNGST | 10053 | 11876 | 11723 | 301 | 259 | 0.72 |
| Additional Sales Tax | 834 | 1081 | 999 | 9 | 5 | 0.01 |
| Surcharge | 50 | 104 | - | - | - | - |
| Additional Surcharge | - | 26 | - | - | - | - |
| Others | 40 | 52 | 72 | 16 | 27 | 0.08 |
| Resale | 286 | 345 | 330 | 2 | 1 | - |
| Surcharge U / S 3 (i) | 158 | 113 | 223 | 1 | 1 | - |
| TNGST-Sub-Total | 11421 | 13597 | 13347 | 329 | 293 | 0.81 |
| VAT Revenue | - | - | 2290 | 16473 | 19305 | 53.70 |
| Central Sales Tax | 1495 | 1799 | 2034 | 1744 | 1653 | 4.60 |
| Entertainment Tax | 59 | 44 | 25 | 16 | 12 | 0.03 |
| Betting Tax | 5 | 6 | 6 | 6 | 6 | 0.02 |
| Luxury Tax | 78 | 92 | 128 | 160 | 170 | 0.47 |
| Entry Tax | 808 | 1016 | 1318 | 1125 | 996 | 2.77 |
| TDS Collection | 41 | 61 | 69 | 100 | 135 | 0.38 |
| (i) All Taxes of CT Department | 13907 | 16615 | 19217 | 19953 | 22570 | 62.78 |
| % growth over previous year | 18.3 | 19.5 | 15.7 | 3.83 | 13.12 | - |

(contd)

**COMMERCIAL TAXES REVENUE RECEIPTS
(ALL TAXES)
2004-2005 TO 2008-09**



| | | | | | |
|--------------------|----------------|----------------|----------------|----------------|----------------|
| | 2004-05 | 2005-06 | 2006-07 | 2007-08 | 2008-09 |
| ■ ALL TAXES | 13907 | 16615 | 19217 | 19953 | 22570 |

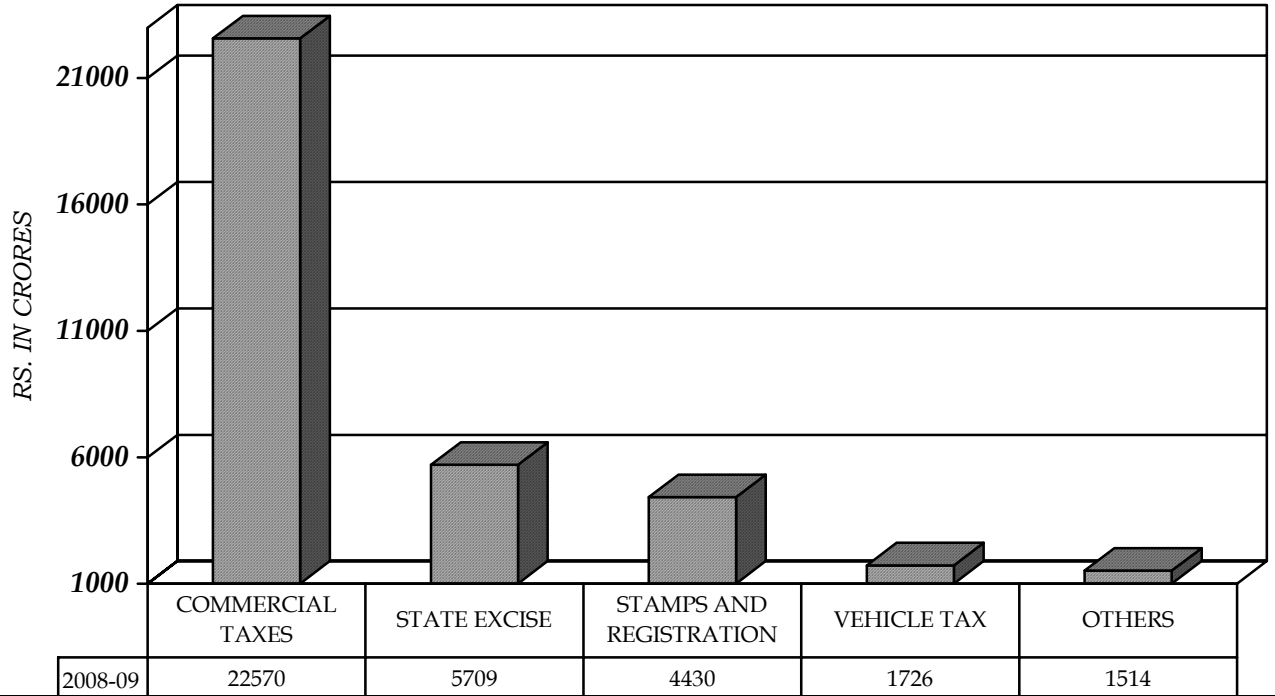
Table - 4 (contd.)

(Rs.In Crores)

| (1) | (2) | (3) | (4) | (5) | (6) | (7) |
|---|-------------|-------------|-------------|--------------|--------------|--------------|
| <i>(ii) Other Department's Tax Revenue Receipts</i> | | | | | | |
| State Excise | 2549 | 3177 | 3800 | 4370 | 5709 | 15.88 |
| Stamps and Registration | 1604 | 2085 | 2720 | 3259 | 4430 | 12.32 |
| Vehicle Tax | 1015 | 1125 | 1285 | 1410 | 1726 | 4.80 |
| Land Revenue | 72 | 179 | 69 | 71 | 177 | 0.49 |
| Agricultural Income Tax | 1 | - | - | - | - | - |
| Electricity Duties | 243 | 95 | 250 | 250 | 361 | 1.01 |
| Urban Land Revenue | 12 | 12 | 16 | 17 | 18 | 0.05 |
| Taxes on goods and passengers | 764 | 985 | 1220 | 1433 | 958 | 2.67 |
| <i>(ii) All Taxes of other Departments</i> | <i>6260</i> | <i>7658</i> | <i>9360</i> | <i>10810</i> | <i>13379</i> | <i>37.22</i> |
| Total Tax Revenue (i + ii) | 20167 | 24273 | 28577 | 30763 | 35949 | 100.00 |
| % growth over previous year | 22.0 | 20.4 | 17.7 | 7.65 | 15.46 | -- |

Source: Annual Financial Statement-2009-10, Govt. of Tamil Nadu.

STATE TAX REVENUE RECEIPTS 2008-09

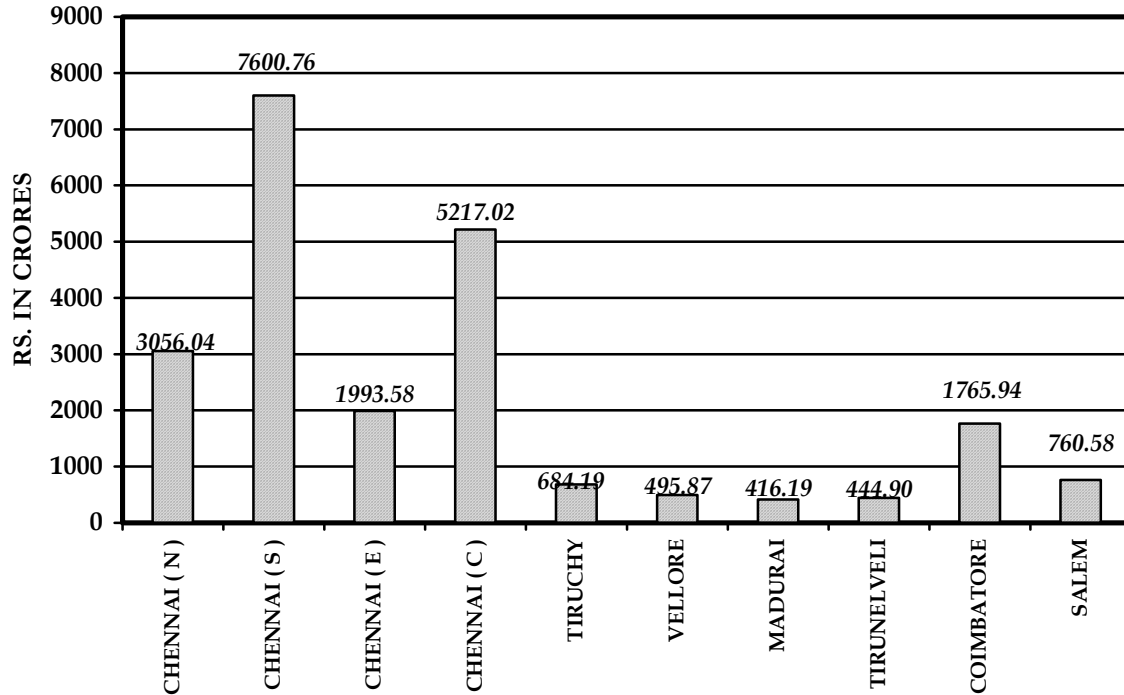


2007-08-Accounts, 2008-09-Revised Estimate

5.DIVISION WISE REVENUE RECEIPTS UNDER ALL ACTS (Rs.In Crores)

| Type of Tax | Chen nai (N) | Chen nai (S) | Chen nai (E) | Chen nai (C) | Tiru chy | Vell ore | Madu rai | Tiru nel veli | Coim batore | Salem | STATE | % |
|-------------------|-----------------|-----------------|--------------------|-----------------|-------------|-------------|-------------|---------------------|----------------|--------|----------|--------|
| VAT-Goods | 690.34 | 2244.23 | 1191.03 | 2309.08 | 438.08 | 165.91 | 275.94 | 335.21 | 848.76 | 539.52 | 9038.10 | 40.05 |
| NON-VAT-Goods | 2188.03 | 4483.41 | 423.11 | 2288.89 | 9.85 | 277.43 | 3.46 | - | 559.98 | 15.79 | 10249.95 | 45.41 |
| Others | 0.37 | 6.27 | 1.30 | 1.41 | 0.66 | 0.44 | 0.43 | 0.45 | 4.54 | 0.86 | 16.73 | 0.07 |
| VAT Revenue | 2878.74 | 6733.91 | 1615.44 | 4599.38 | 448.59 | 443.78 | 279.83 | 335.66 | 1413.28 | 556.17 | 19304.78 | 85.53 |
| TNGST Revenue | 38.08 | 62.06 | 20.05 | 46.58 | 12.21 | 5.98 | 15.70 | 13.84 | 48.26 | 29.69 | 292.45 | 1.30 |
| Central Sales Tax | 131.08 | 605.34 | 170.44 | 227.47 | 186.84 | 10.85 | 33.42 | 52.34 | 143.42 | 91.83 | 1653.03 | 7.32 |
| Et. Tax | - | 1.91 | 4.03 | 1.19 | 0.35 | 0.18 | 0.42 | 0.28 | 3.02 | 0.86 | 12.24 | 0.06 |
| Betting Tax | - | 5.99 | - | - | - | - | - | - | 0.13 | - | 6.12 | 0.03 |
| Luxury Tax | 0.72 | 39.78 | 33.06 | 58.61 | 6.48 | 2.00 | 8.96 | 2.56 | 15.08 | 2.90 | 170.15 | 0.75 |
| Entry -Goods | 0.22 | 0.37 | 0.93 | 5.74 | 0.05 | 0.01 | 0.44 | 0.01 | 0.40 | 0.73 | 8.90 | 0.04 |
| Entry -Vehicles | 7.20 | 151.40 | 149.63 | 278.05 | 29.67 | 33.07 | 77.42 | 40.21 | 142.35 | 78.40 | 987.40 | 4.37 |
| Entry Tax – Total | 7.42 | 151.77 | 150.56 | 283.79 | 29.72 | 33.08 | 77.86 | 40.22 | 142.75 | 79.13 | 996.30 | 4.41 |
| TDS Collection | - | - | - | - | - | - | - | - | - | - | 135.05 | 0.60 |
| All Taxes of CT | 3056.04 | 7600.76 | 1993.58 | 5217.02 | 684.19 | 495.87 | 416.19 | 444.90 | 1765.94 | 760.58 | 22570.12 | 100.00 |

***DIVISIONWISE REVENUE RECEIPTS
UNDER ALL ACTS***

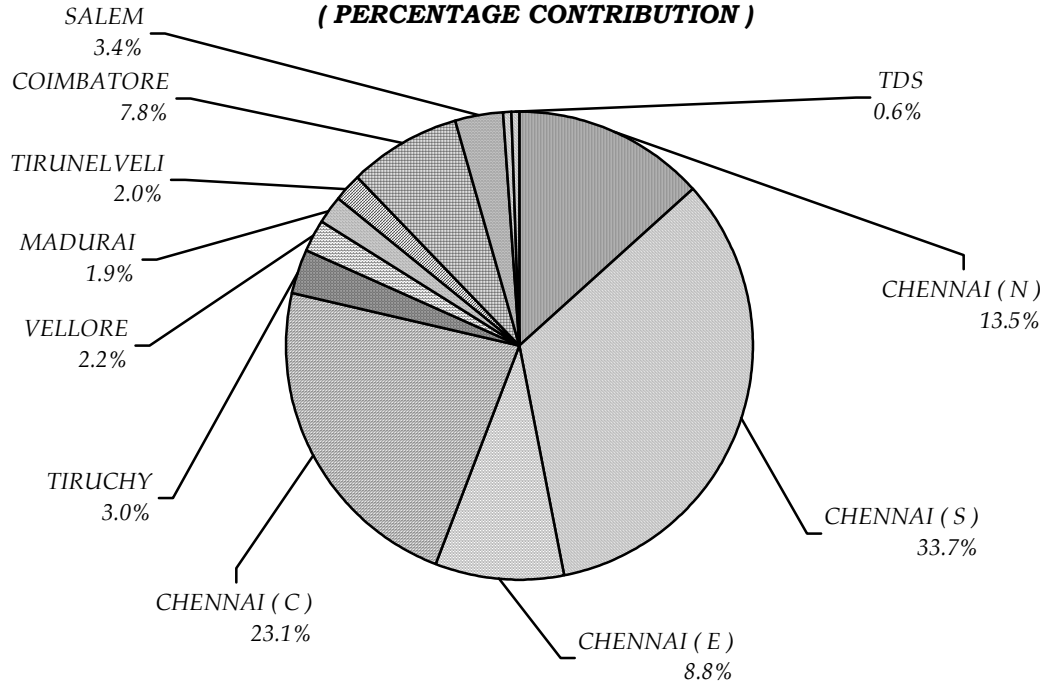


6. DIVISIONWISE TAX REVENUE RECEIPTS

(Rs.In Crores)

| CT Division | 2004-05 | | 2005-06 | | 2006-07 | | 2007-08 | | 2008-09 | |
|----------------|-------------|-------|-------------|-------|-------------|-------|-------------|-------|-------------|-------|
| | Reve nue | % | Reve nue | % | Reve nue | % | Reve nue | % | Reve nue | % |
| Chennai (N) | 1622 | 11.7 | 1946 | 11.7 | 2301 | 12.0 | 2564 | 12.8 | 3056 | 13.5 |
| Chennai (S) | 4522 | 32.5 | 5273 | 31.7 | 6180 | 32.1 | 6498 | 32.6 | 7601 | 33.7 |
| Chennai (E) | 1344 | 9.7 | 1591 | 9.6 | 1952 | 10.1 | 1889 | 9.5 | 1994 | 8.8 |
| Chennai (C) | 3100 | 22.3 | 3906 | 23.5 | 4358 | 22.7 | 4649 | 23.3 | 5217 | 23.1 |
| Tiruchy | 429 | 3.1 | 524 | 3.2 | 596 | 3.1 | 659 | 3.3 | 684 | 3.0 |
| Vellore | 362 | 2.6 | 431 | 2.6 | 435 | 2.3 | 443 | 2.2 | 495 | 2.2 |
| Madurai | 349 | 2.5 | 394 | 2.4 | 448 | 2.3 | 404 | 2.0 | 416 | 1.9 |
| Tirunelveli | 367 | 2.6 | 380 | 2.3 | 379 | 2.0 | 350 | 1.8 | 445 | 2.0 |
| Coimbatore | 1201 | 8.6 | 1453 | 8.7 | 1763 | 9.2 | 1704 | 8.5 | 1766 | 7.8 |
| Salem | 570 | 4.1 | 656 | 3.9 | 736 | 3.8 | 693 | 3.5 | 761 | 3.4 |
| TDS Collection | 41 | 0.3 | 61 | 0.4 | 69 | 0.4 | 100 | 0.5 | 135 | 0.6 |
| STATE | 13907 | 100.0 | 16615 | 100.0 | 19217 | 100.0 | 19953 | 100.0 | 22570 | 100.0 |

**DIVISIONWISE TAX REVENUE RECEIPTS
UNDER COMMERCIAL TAXES 2008-09
(PERCENTAGE CONTRIBUTION)**

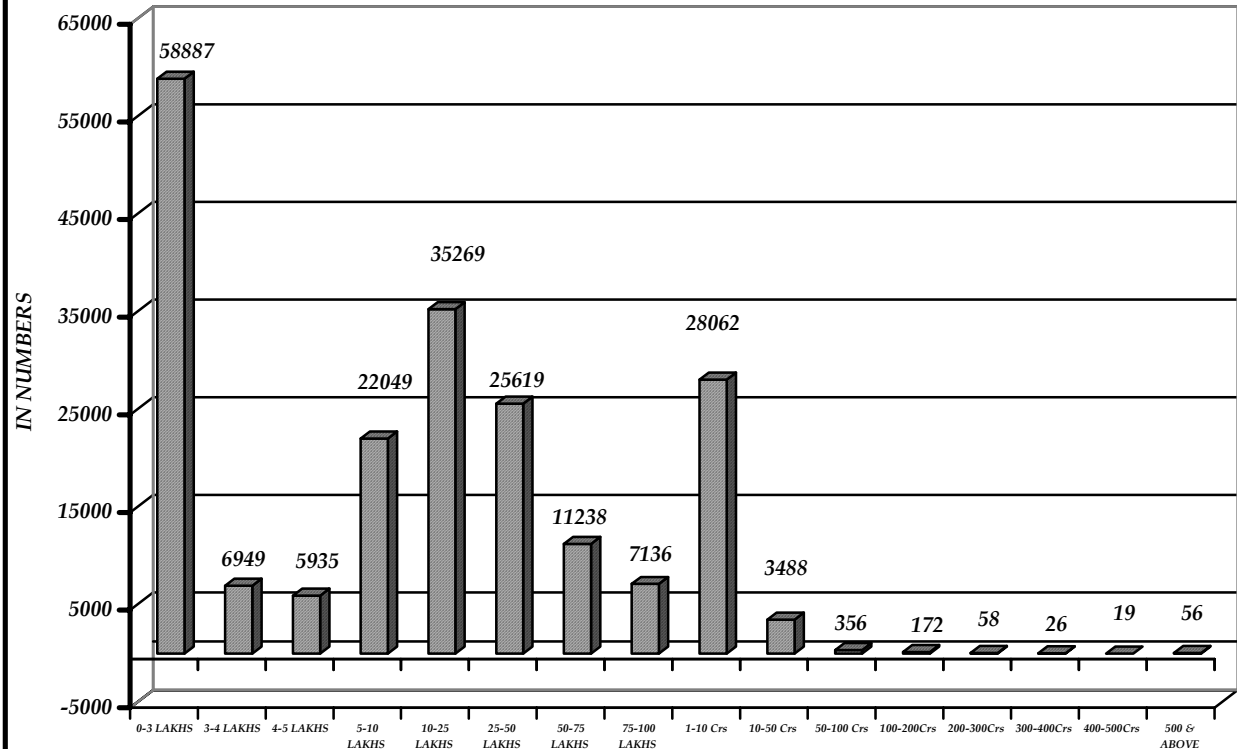


**7. DIVISIONWISE DISTRIBUTION OF VAT ACT ASSESSEES
BY TURNOVER SLABS IN 2008-09**

(In No.)

| Turnover Slabs | Assessees | | | | | | | | | | | | |
|---------------------|--------------|--------------|--------------|--------------|--------------|--------------|--------------|--------------|--------------|--------------|---------------|---------------|--|
| | Chennai (N) | Chennai (S) | Chennai (E) | Chennai (C) | Tiruchy | Vellore | Madurai | Tirunelveli | Coimbatore | Sallem | STATE | % | |
| Rs.in lakhs | | | | | | | | | | | | | |
| 0-3 | 1953 | 9764 | 3181 | 5451 | 3771 | 2535 | 5955 | 4393 | 14040 | 7844 | 58887 | 28.68 | |
| 3-4 | 354 | 1049 | 357 | 526 | 495 | 365 | 952 | 618 | 1414 | 819 | 6949 | 3.38 | |
| 4-5 | 306 | 887 | 324 | 423 | 447 | 307 | 757 | 553 | 1214 | 717 | 5935 | 2.89 | |
| 5-10 | 1220 | 3418 | 1289 | 1771 | 1680 | 1298 | 2633 | 1931 | 4382 | 2427 | 22049 | 10.74 | |
| 10-25 | 2027 | 5436 | 2207 | 2760 | 3271 | 2255 | 3736 | 3219 | 6599 | 3759 | 35269 | 17.18 | |
| 25-50 | 1528 | 3964 | 1614 | 2058 | 2353 | 1764 | 2574 | 2407 | 4659 | 2698 | 25619 | 12.48 | |
| 50-75 | 731 | 1699 | 713 | 987 | 1023 | 684 | 1012 | 1004 | 2206 | 1179 | 11238 | 5.47 | |
| 75-100 | 484 | 1075 | 442 | 645 | 639 | 409 | 634 | 598 | 1435 | 775 | 7136 | 3.48 | |
| Rs.in crores | | | | | | | | | | | | | |
| 1-10 | 2078 | 4108 | 2116 | 2820 | 2488 | 1520 | 2271 | 2319 | 5336 | 3006 | 28062 | 13.67 | |
| 10-50 | 330 | 520 | 397 | 468 | 227 | 129 | 202 | 282 | 598 | 335 | 3488 | 1.70 | |
| 50-100 | 38 | 50 | 42 | 74 | 18 | 6 | 17 | 24 | 51 | 36 | 356 | 0.17 | |
| 100-200 | 16 | 33 | 27 | 34 | 8 | 6 | 10 | 9 | 15 | 14 | 172 | 0.08 | |
| 200-300 | 6 | 9 | 9 | 12 | 3 | - | 2 | 1 | 8 | 8 | 58 | 0.03 | |
| 300-400 | 1 | 5 | 4 | 7 | 1 | - | 1 | 1 | 4 | 2 | 26 | 0.01 | |
| 400-500 | 1 | 8 | 3 | 3 | - | 2 | - | - | 2 | - | 19 | 0.01 | |
| 500 & above | 6 | 14 | 10 | 13 | 3 | - | 1 | 5 | 3 | 1 | 56 | 0.03 | |
| Total | 11079 | 32039 | 12735 | 18052 | 16427 | 11280 | 20757 | 17364 | 41966 | 23620 | 205319 | 100.00 | |
| % to State | 5.40 | 15.61 | 6.20 | 8.79 | 8.00 | 5.49 | 10.11 | 8.46 | 20.44 | 11.50 | 100.00 | - | |

VAT ASSESSEES BY TURNOVER SLABS IN 2008-09

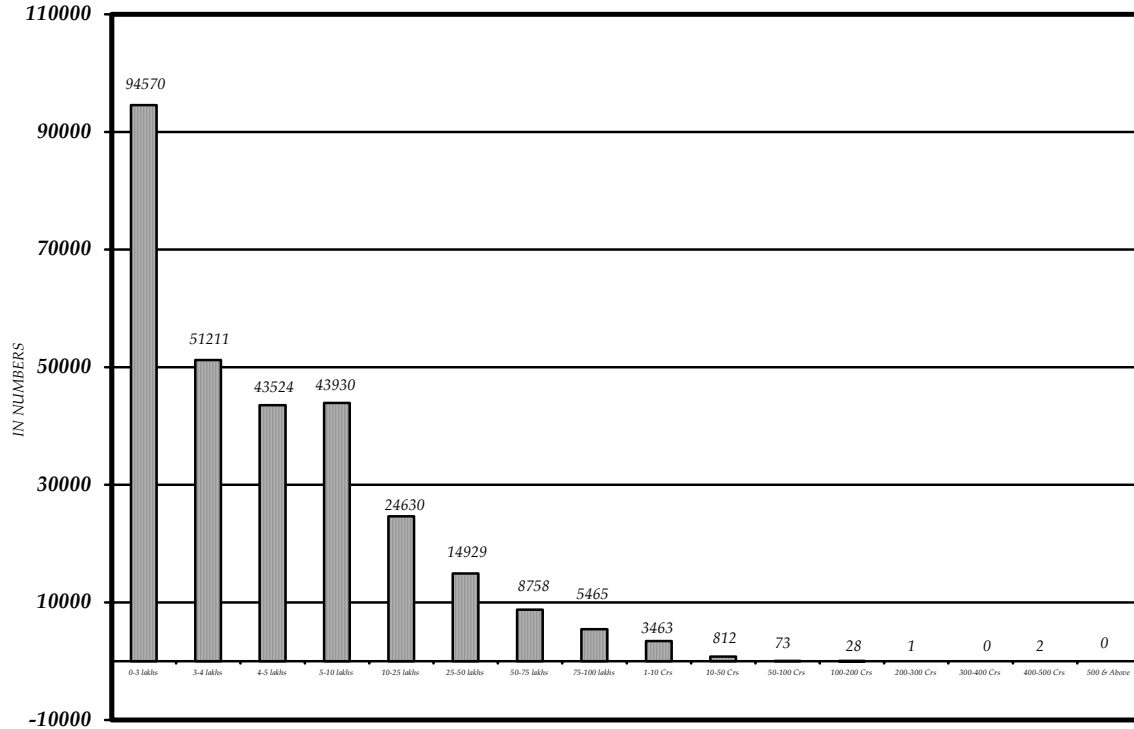


**8. DIVISIONWISE DISTRIBUTION OF VAT ACT NON-ASSESSEES
BY TURNOVER SLABS IN 2008-09**

(In No.)

| Turnover Slabs | Non-Assessees | | | | | | | | | | | STATE | % |
|---------------------|---------------|--------------|-------------|--------------|--------------|--------------|--------------|--------------|--------------|--------------|---------------|---------------|---|
| | Chennai (N) | Chennai (S) | Chennai (E) | Chennai (C) | Tiruchy | Vellore | Madurai | Tirunelveli | Coimbatore | Sallem | | | |
| Rs.in lakhs | | | | | | | | | | | | | |
| 0-3 | 1096 | 14707 | 2305 | 4575 | 13046 | 15047 | 7352 | 12363 | 12377 | 11702 | 94570 | 32.45 | |
| 3-4 | 580 | 4896 | 1841 | 3729 | 5794 | 8444 | 4537 | 6861 | 7974 | 6555 | 51211 | 17.57 | |
| 4-5 | 449 | 4148 | 1385 | 2114 | 5654 | 7153 | 3872 | 5345 | 6633 | 6771 | 43524 | 14.94 | |
| 5-10 | 319 | 4836 | 1346 | 192 | 7776 | 6501 | 4318 | 2680 | 7297 | 8665 | 43930 | 15.08 | |
| 10-25 | 268 | 2988 | 832 | 47 | 2944 | 3730 | 1978 | 1548 | 3305 | 6990 | 24630 | 8.45 | |
| 25-50 | 242 | 645 | 543 | 19 | 1414 | 2385 | 1353 | 1670 | 2198 | 4460 | 14929 | 5.12 | |
| 50-75 | 119 | 311 | 149 | 18 | 1026 | 1778 | 706 | 701 | 1262 | 2688 | 8758 | 3.01 | |
| 75-100 | 84 | 56 | 39 | 35 | 677 | 1261 | 188 | 610 | 441 | 2074 | 5465 | 1.88 | |
| Rs.in crores | | | | | | | | | | | | | |
| 1-10 | 42 | 17 | 3 | 31 | 629 | 928 | 133 | 321 | 290 | 1069 | 3463 | 1.19 | |
| 10-50 | 1 | 5 | - | 16 | 96 | 421 | - | 79 | 51 | 143 | 812 | 0.28 | |
| 50-100 | - | 2 | - | 5 | 16 | - | - | 4 | - | 46 | 73 | 0.02 | |
| 100-200 | - | - | - | 2 | - | - | - | - | - | 26 | 28 | 0.01 | |
| 200-300 | - | - | - | - | - | - | - | 1 | - | - | 1 | 0.00 | |
| 300-400 | - | - | - | - | - | - | - | - | - | - | - | 0.00 | |
| 400-500 | - | - | - | - | - | - | - | 2 | - | - | 2 | 0.00 | |
| 500 & above | - | - | - | - | - | - | - | - | - | - | - | 0.00 | |
| Total | 3200 | 32611 | 8443 | 10783 | 39072 | 47648 | 24437 | 32185 | 41828 | 51189 | 291396 | 100.00 | |
| % to State | 1.10 | 11.19 | 2.90 | 3.70 | 13.41 | 16.35 | 8.39 | 11.04 | 14.35 | 17.57 | 100.00 | - | |

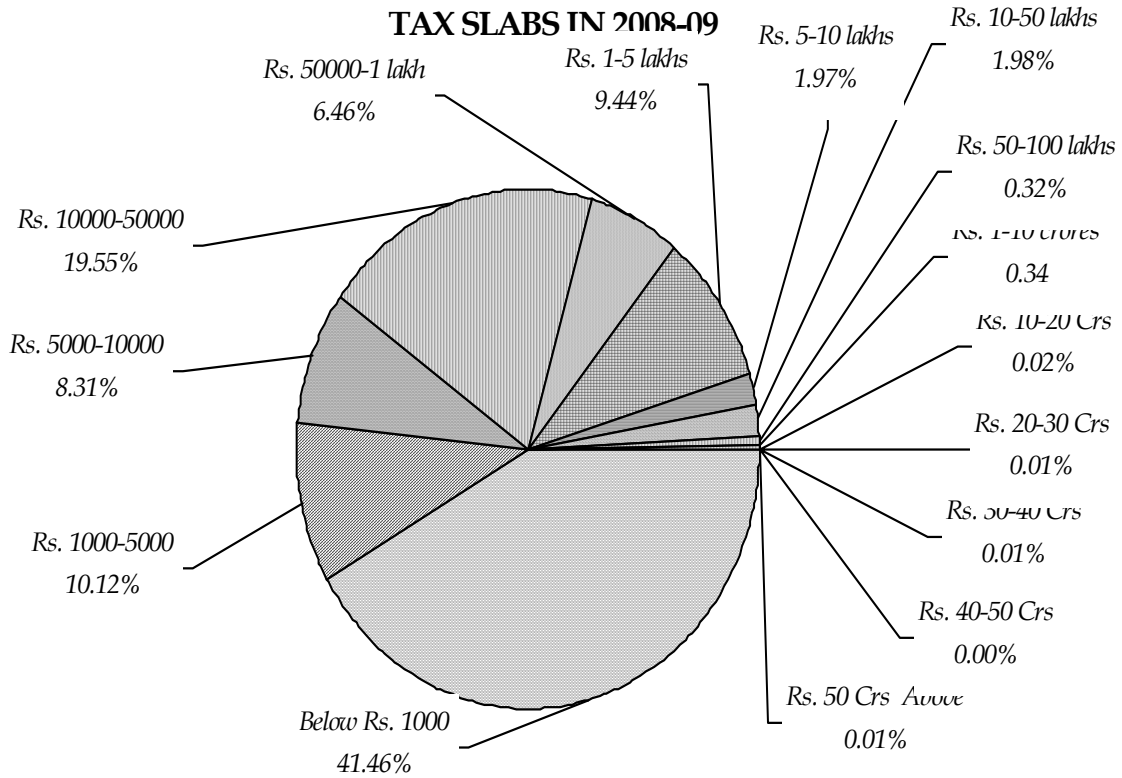
VAT ACT NON-ASSESSEES BY TURNOVER SLABS IN 2008-09



**9. DIVISIONWISE DISTRIBUTION OF VAT ACT ASSESSEES
BY TAX SLABS IN 2008-09 - (In No.)**

| Tax Slabs | Assessees | | | | | | | | | | | % |
|-------------------------|--------------------|--------------------|--------------------|--------------------|--------------|--------------|-----------------|---------------------|--------------------|--------------|---------------|---------------|
| | Chen nai (N) | Chen nai (S) | Chen nai (E) | Chen nai (C) | Tiruc hy | Vell ore | Ma du rai | Tiru nel veli | Coim ba tore | Sal em | STATE | |
| Below Rs.1000 | 3224 | 12237 | 4840 | 7061 | 5524 | 4288 | 9332 | 7256 | 20546 | 10815 | 85123 | 41.46 |
| Rs.1000-5000 | 864 | 2734 | 990 | 1487 | 2483 | 1619 | 2653 | 1953 | 3559 | 2431 | 20773 | 10.12 |
| Rs.5000-10000 | 784 | 2452 | 856 | 1223 | 1900 | 1288 | 1988 | 1644 | 2783 | 2144 | 17062 | 8.31 |
| Rs.10000-50000 | 2521 | 6497 | 2524 | 3236 | 3883 | 2498 | 3859 | 3640 | 7306 | 4182 | 40146 | 19.55 |
| Rs.50000-1 lakh | 1065 | 2410 | 943 | 1232 | 961 | 583 | 1035 | 1022 | 2534 | 1482 | 13267 | 6.46 |
| Rs.1 - 5 lakhs | 1732 | 3681 | 1528 | 2258 | 1238 | 733 | 1390 | 1290 | 3702 | 1833 | 19385 | 9.44 |
| Rs.5-10 lakhs | 390 | 860 | 392 | 594 | 203 | 132 | 232 | 224 | 686 | 326 | 4033 | 1.97 |
| Rs.10-50 lakhs | 397 | 854 | 446 | 675 | 156 | 116 | 207 | 251 | 681 | 288 | 4071 | 1.98 |
| Rs.50-100 lakhs | 42 | 134 | 90 | 117 | 40 | 16 | 28 | 49 | 84 | 59 | 659 | 0.32 |
| Rs.1-10 crores | 50 | 156 | 103 | 143 | 36 | 5 | 32 | 34 | 75 | 57 | 691 | 0.34 |
| Rs.10-20 crores | 6 | 14 | 9 | 9 | - | - | - | - | 5 | - | 43 | 0.02 |
| Rs.20-30 crores | 1 | 8 | 5 | 4 | - | - | - | - | 2 | 2 | 22 | 0.01 |
| Rs.30-40 crores | - | 3 | 1 | 5 | - | - | - | - | 2 | 1 | 12 | 0.01 |
| Rs.40-50 crores | - | 1 | 4 | 1 | - | - | 1 | - | - | - | 7 | 0.00 |
| Rs.50 Crores & above | 3 | 4 | 4 | 7 | 3 | 2 | - | 1 | 1 | - | 25 | 0.01 |
| TOTAL | 11079 | 32039 | 12735 | 18052 | 16427 | 11280 | 20757 | 17364 | 41966 | 23620 | 205319 | 100.00 |
| % to State Total | 5.40 | 15.61 | 6.20 | 8.79 | 8.00 | 5.49 | 10.11 | 8.46 | 20.44 | 11.50 | 100.00 | |

**PERCENTAGE DISTRIBUTION OF VAT ASSESSEES BY
TAX SLABS IN 2008-09**



10. DISTRIBUTION OF ASSESSEES BY TURN OVER AND TAX SLABS IN 2008-09
(In No.)

| Tax Slabs | Turnover Slabs | | | | | |
|-------------------|-----------------|-----------------|-----------------|------------------|-------------------|-------------------|
| | Rs.0-3 lakhs | Rs.3-4 lakhs | Rs.4-5 lakhs | Rs.5-10 lakhs | Rs.10-25 lakhs | Rs.25-50 lakhs |
| (1) | (2) | (3) | (4) | (5) | (6) | (7) |
| Below Rs.1000 | 46142 | 2982 | 2268 | 7167 | 8341 | 5847 |
| Rs.1000-5000 | 7784 | 1661 | 1339 | 4684 | 2556 | 1334 |
| Rs.5000-10000 | 3035 | 795 | 703 | 2408 | 7245 | 1298 |
| Rs.10000-50000 | 1908 | 1503 | 1460 | 6605 | 11607 | 9486 |
| Rs.50000-1 lakh | 9 | 5 | 165 | 1031 | 3810 | 3257 |
| Rs.1-5 lakhs | 9 | 2 | - | 152 | 1707 | 4319 |
| Rs.5-10 lakhs | - | - | - | 2 | 2 | 78 |
| Rs.10-50 lakhs | - | 1 | - | - | 1 | - |
| Rs.50-100 lakhs | - | - | - | - | - | - |
| Rs.1-10 crores | - | - | - | - | - | - |
| Rs.10-20 crores | - | - | - | - | - | - |
| Rs.20-30 crores | - | - | - | - | - | - |
| Rs.30-40 crores | - | - | - | - | - | - |
| Rs.40-50 crores | - | - | - | - | - | - |
| Rs.50 Crs&above | - | - | - | - | - | - |
| TOTAL | 58887 | 6949 | 5935 | 22049 | 35269 | 25619 |
| % to Total | 28.68 | 3.38 | 2.89 | 10.74 | 17.18 | 12.48 |

Table.10.(contd.)

| Tax Slabs | Turnover Slabs | | | | | |
|-------------------|----------------|-----------------|----------------|-----------------|------------------|-------------------|
| | Rs.50-75 lakhs | Rs.75-100 lakhs | Rs.1-10 Crores | Rs.10-50 Crores | Rs.50-100 Crores | Rs.100-200 Crores |
| (1) | (2) | (3) | (4) | (5) | (6) | (7) |
| Below Rs.1000 | 2787 | 1707 | 7041 | 849 | 12 | - |
| Rs.1000-5000 | 461 | 253 | 666 | 28 | 7 | - |
| Rs.5000-10000 | 558 | 287 | 697 | 31 | 4 | 1 |
| Rs.10000-50000 | 2495 | 1268 | 3591 | 209 | 10 | 4 |
| Rs.50000-1 lakh | 1426 | 889 | 2523 | 134 | 15 | 3 |
| Rs.1-5 lakhs | 3137 | 2323 | 7277 | 429 | 21 | 9 |
| Rs.5-10 lakhs | 391 | 316 | 2981 | 238 | 20 | 3 |
| Rs.10-50 lakhs | 3 | 93 | 3060 | 822 | 58 | 23 |
| Rs.50-100 lakhs | - | - | 204 | 403 | 30 | 14 |
| Rs.1-10 crores | - | - | 22 | 345 | 176 | 90 |
| Rs.10-20 crores | - | - | - | - | 3 | 17 |
| Rs.20-30 crores | - | - | - | - | - | 6 |
| Rs.30-40 crores | - | - | - | - | - | - |
| Rs.40-50 crores | - | - | - | - | - | - |
| Rs.50 Crs&above | - | - | - | - | - | 2 |
| TOTAL | 11238 | 7136 | 28062 | 3488 | 356 | 172 |
| % to Total | 5.47 | 3.48 | 13.67 | 1.70 | 0.17 | 0.08 |

Table.10. (contd.)

| Tax Slabs | Turnover Slabs | | | | Total | % Contri- -bution |
|-----------------|----------------------|----------------------|----------------------|-----------------------|---------------|----------------------|
| | Rs.200-300 Crores | Rs.300-400 Crores | Rs.400-500 Crores | Rs.500 Crs & above | | |
| (1) | (2) | (3) | (4) | (5) | (6) | (7) |
| Below Rs.1000 | - | - | - | - | 85123 | 41.46 |
| Rs.1000-5000 | - | - | - | - | 20773 | 10.12 |
| Rs.5000-10000 | - | - | - | - | 17062 | 8.31 |
| Rs.10000-50000 | - | - | - | - | 40146 | 19.55 |
| Rs.50000-1 lakh | - | - | - | - | 13267 | 6.46 |
| Rs.1-5 lakhs | - | - | - | - | 19385 | 9.44 |
| Rs.5-10 lakhs | 1 | 1 | - | - | 4033 | 1.97 |
| Rs.10-50 lakhs | 8 | 2 | - | - | 4071 | 1.98 |
| Rs.50-100 lakhs | 6 | 2 | - | - | 659 | 0.32 |
| Rs.1-10 crores | 27 | 13 | 3 | 15 | 691 | 0.34 |
| Rs.10-20 crores | 7 | 5 | 3 | 8 | 43 | 0.02 |
| Rs.20-30 crores | 6 | 1 | 5 | 4 | 22 | 0.01 |
| Rs.30-40 crores | 3 | 2 | 4 | 3 | 12 | 0.01 |
| Rs.40-50 crores | - | - | 1 | 6 | 7 | 0.00 |
| Rs.50 Crs&above | - | - | 3 | 20 | 25 | 0.01 |
| TOTAL | 58 | 26 | 19 | 56 | 205319 | 100.00 |
| % to Total | 0.03 | 0.01 | 0.01 | 0.03 | 100.00 | - |

11 . DISTRIBUTION OF TAX REVENUE BY TURN OVER AND TAX SLABS IN 2008-09
(Rs.In Lakhs)

| Tax Slabs | Turnover Slabs | | | | | |
|-----------------|-----------------|-----------------|-----------------|------------------|-------------------|-------------------|
| | Rs.0-3 lakhs | Rs.3-4 lakhs | Rs.4-5 lakhs | Rs.5-10 lakhs | Rs.10-25 lakhs | Rs.25-50 lakhs |
| (1) | (2) | (3) | (4) | (5) | (6) | (7) |
| Below Rs.1000 | 28.39 | 1.94 | 1.35 | 4.44 | 4.32 | 2.13 |
| Rs.1000-5000 | 246.48 | 55.26 | 47.38 | 197.09 | 92.02 | 49.06 |
| Rs.5000-10000 | 265.19 | 71.98 | 61.68 | 213.72 | 647.88 | 114.87 |
| Rs.10000-50000 | 414.51 | 384.97 | 368.17 | 1919.10 | 3507.43 | 2779.91 |
| Rs.50000-1 lakh | 6.39 | 2.02 | 114.42 | 894.76 | 3321.44 | 2954.79 |
| Rs.1-5 lakhs | 17.04 | 4.25 | - | 220.38 | 3489.80 | 10103.32 |
| Rs.5-10 lakhs | - | - | - | 14.51 | 10.91 | 528.89 |
| Rs.10-50 lakhs | - | 11.58 | - | - | 11.20 | 57.03 |
| Rs.50-100 lakhs | - | - | - | - | - | - |
| Rs.1-10 crores | - | - | - | - | - | - |
| Rs.10-20 crores | - | - | - | - | - | - |
| Rs.20-30 crores | - | - | - | - | - | - |
| Rs.30-40 crores | - | - | - | - | - | - |
| Rs.40-50 crores | - | - | - | - | - | - |
| Rs.50 Crs&above | - | - | - | - | - | - |
| TOTAL | 978.00 | 532.00 | 593.00 | 3464.00 | 11085.00 | 16590.00 |
| % to Total | 0.05 | 0.03 | 0.03 | 0.18 | 0.58 | 0.86 |

Table.11.(contd.)

| Tax Slabs | Turnover Slabs | | | | | |
|-------------------|-------------------|--------------------|-------------------|--------------------|---------------------|----------------------|
| | Rs.50-75 lakhs | Rs.75-100 lakhs | Rs.1-10 Crores | Rs.10-50 Crores | Rs.50-100 Crores | Rs.100-200 Crores |
| (1) | (2) | (3) | (4) | (5) | (6) | (7) |
| Below Rs.1000 | 0.80 | 0.32 | 1.27 | 0.13 | 0.01 | - |
| Rs.1000-5000 | 16.96 | 9.09 | 23.81 | 1.10 | 0.16 | - |
| Rs.5000-10000 | 47.73 | 25.41 | 61.75 | 2.23 | 0.33 | 0.05 |
| Rs.10000-50000 | 845.53 | 431.03 | 1230.40 | 72.41 | 2.77 | 1.38 |
| Rs.50000-1 lakh | 1292.66 | 797.97 | 2254.22 | 115.55 | 11.17 | 2.35 |
| Rs.1-5 lakhs | 8093.93 | 6897.65 | 23890.27 | 1411.38 | 50.74 | 27.49 |
| Rs.5-10 lakhs | 3274.24 | 2712.72 | 26368.68 | 2039.17 | 166.42 | 26.64 |
| Rs.10-50 lakhs | 40.15 | 1282.81 | 74245.39 | 29472.45 | 1711.27 | 652.80 |
| Rs.50-100 lakhs | - | - | 17141.83 | 35630.79 | 2778.19 | 1078.84 |
| Rs.1-10 crores | - | - | 3080.38 | 87942.79 | 61209.48 | 44690.78 |
| Rs.10-20 crores | - | - | - | - | 4721.46 | 31251.87 |
| Rs.20-30 crores | - | - | - | - | - | 15098.70 |
| Rs.30-40 crores | - | - | - | - | - | - |
| Rs.40-50 crores | - | - | - | - | - | - |
| Rs.50 Crs&above | - | - | - | - | - | 15590.10 |
| TOTAL | 13612.00 | 12157.00 | 148298.00 | 156688.00 | 70652.00 | 108421.00 |
| % to Total | 0.71 | 0.63 | 7.69 | 8.12 | 3.66 | 5.62 |

Table.11.(contd.)

| Tax Slabs | Turnover Slabs | | | | | Total | % Contri -bution |
|-----------------|----------------------|----------------------|----------------------|-----------------------|-------------------|---------------|---------------------|
| | Rs.200-300 Crores | Rs.300-400 Crores | Rs.400-500 Crores | Rs.500 Crs & above | | | |
| (1) | (2) | (3) | (4) | (5) | (6) | (7) | |
| Below Rs.1000 | - | - | - | - | 45.10 | - | |
| Rs.1000-5000 | - | - | - | - | 738.41 | 0.04 | |
| Rs.5000-10000 | - | - | - | - | 1512.82 | 0.08 | |
| Rs.10000-50000 | - | - | - | - | 11957.61 | 0.61 | |
| Rs.50000-1 lakh | - | - | - | - | 11767.74 | 0.61 | |
| Rs.1-5 lakhs | - | - | - | - | 54206.25 | 2.79 | |
| Rs.5-10 lakhs | 5.19 | 7.00 | - | - | 35154.37 | 1.81 | |
| Rs.10-50 lakhs | 222.03 | 39.00 | - | - | 107745.71 | 5.55 | |
| Rs.50-100 lakhs | 469.92 | 125.91 | - | - | 57225.48 | 2.95 | |
| Rs.1-10 crores | 15512.83 | 6408.20 | 2248.93 | 8124.26 | 229217.65 | 11.80 | |
| Rs.10-20 crores | 11176.77 | 5167.06 | 4127.40 | 14819.68 | 71264.24 | 3.67 | |
| Rs.20-30 crores | 15844.07 | 2407.56 | 11498.88 | 9131.18 | 53980.39 | 2.78 | |
| Rs.30-40 crores | 9923.19 | 10806.27 | 10905.35 | 10471.98 | 42106.79 | 2.17 | |
| Rs.40-50 crores | - | - | 4046.37 | 25974.53 | 30020.90 | 1.55 | |
| Rs.50 Crs&above | - | - | 56572.07 | 1149699.37 | 1221861.54 | 62.90 | |
| TDS Collection | - | - | - | - | 13505.00 | 0.69 | |
| TOTAL | 53154.00 | 24961.00 | 89399.00 | 1218221.00 | 1942310.00 | 100.00 | |
| % to Total | 2.76 | 1.29 | 4.63 | 63.16 | 100.00 | - | |

12. DIVISIONWISE ASSESSEES AND TAX REVENUE IN 2008-09

| CT Divisions | VAT ACT | | | | CST ACT | | | |
|----------------|---------------------|--------|-------------------------------------|--------|---------------------|--------|-------------------------------------|--------|
| | No.of Assesseees | % | Tax Revenue (Rs.In crores) | % | No.of Assesseees | % | Tax Revenue (Rs.In crores) | % |
| Chennai (N) | 11079 | 5.40 | 2878.37 | 14.82 | 4811 | 12.11 | 131.08 | 7.93 |
| Chennai (S) | 32039 | 15.61 | 6727.64 | 34.64 | 6411 | 16.14 | 605.34 | 36.62 |
| Chennai (E) | 12735 | 6.20 | 1614.14 | 8.31 | 3492 | 8.79 | 170.44 | 10.31 |
| Chennai (C) | 18052 | 8.79 | 4597.97 | 23.67 | 4961 | 12.49 | 227.47 | 13.76 |
| Tiruchy | 16427 | 8.00 | 447.93 | 2.31 | 1120 | 2.82 | 186.84 | 11.30 |
| Vellore | 11280 | 5.49 | 443.34 | 2.28 | 875 | 2.20 | 10.85 | 0.66 |
| Madurai | 20757 | 10.11 | 279.40 | 1.44 | 2231 | 5.60 | 33.42 | 2.02 |
| Tirunelveli | 17364 | 8.46 | 335.21 | 1.72 | 3786 | 9.53 | 52.34 | 3.17 |
| Coimbatore | 41966 | 20.44 | 1408.74 | 7.25 | 8630 | 21.72 | 143.42 | 8.68 |
| Salem | 23620 | 11.50 | 555.31 | 2.86 | 3416 | 8.60 | 91.83 | 5.55 |
| TDS Collection | -- | -- | 135.05 | 0.70 | -- | -- | -- | -- |
| STATE | 205319 | 100.00 | 19423.10 | 100.00 | 39733 | 100.00 | 1653.03 | 100.00 |

13.SLABWISE ASSESSEES AND TAX REVENUE UNDER VAT ACT IN 2008-09

| Tax Slabs | No.of Assesseees | % | Cumulative % | Tax Revenue (Rs.In Crores) | % | Cumulative % |
|------------------|-------------------------|---------------|---------------------|-----------------------------------|---------------|---------------------|
| Below Rs.1000 | 85123 | 41.46 | 41.46 | 0.45 | 0.00 | 0.00 |
| Rs.1000-5000 | 20773 | 10.12 | 51.58 | 7.38 | 0.04 | 0.04 |
| Rs.5000-10000 | 17062 | 8.31 | 59.89 | 15.13 | 0.08 | 0.12 |
| Rs.10000-50000 | 40146 | 19.55 | 79.44 | 119.58 | 0.61 | 0.73 |
| Rs.50000-1 lakh | 13267 | 6.46 | 85.90 | 117.68 | 0.61 | 1.34 |
| Rs.1-5 lakhs | 19385 | 9.44 | 95.34 | 542.06 | 2.79 | 4.13 |
| Rs.5-10 lakhs | 4033 | 1.97 | 97.31 | 351.54 | 1.81 | 5.94 |
| Rs.10-50 lakhs | 4071 | 1.98 | 99.29 | 1077.46 | 5.55 | 11.49 |
| Rs.50-100 lakhs | 659 | 0.32 | 99.61 | 572.25 | 2.95 | 14.44 |
| Rs.1-10 crores | 691 | 0.34 | 99.95 | 2292.18 | 11.80 | 26.24 |
| Rs.10-20 crores | 43 | 0.02 | 99.97 | 712.64 | 3.67 | 29.91 |
| Rs.20-30 crores | 22 | 0.01 | 99.98 | 539.80 | 2.78 | 32.69 |
| Rs.30-40 crores | 12 | 0.01 | 99.99 | 421.07 | 2.17 | 34.86 |
| Rs.40-50 crores | 7 | 0.00 | 99.99 | 300.21 | 1.54 | 36.40 |
| Rs.50 Crs&above | 25 | 0.01 | 100.00 | 12218.62 | 62.91 | 99.31 |
| TDS Collection | - | - | - | 135.05 | 0.69 | 100.00 |
| TOTAL | 205319 | 100.00 | - | 19423.10 | 100.00 | - |

14.DIVISIONWISE SLABWISE ASSESSEES AND TAX REVENUE IN 2008-09

(Tax - Rs.In Lakhs)

| Tax Slabs | Assessees/ Tax | Chennai (N) | Chennai (S) | Chennai (E) | Chennai (C) | Trichy | Vellore |
|------------------------|---------------------------|------------------------|------------------------|------------------------|------------------------|---------------|----------------|
| (1) | (2) | (3) | (4) | (5) | (6) | (7) | (8) |
| Below Rs.1000 | Assessees | 3224 | 12237 | 4840 | 7061 | 5524 | 4288 |
| | <i>Tax</i> | 1.68 | 6.40 | 2.01 | 3.53 | 4.38 | 3.32 |
| Rs.1000 - 5000 | Assessees | 864 | 2734 | 990 | 1487 | 2483 | 1619 |
| | <i>Tax</i> | 27.45 | 101.90 | 34.17 | 58.85 | 79.99 | 61.91 |
| Rs.5000 - 10000 | Assessees | 784 | 2452 | 856 | 1223 | 1900 | 1288 |
| | <i>Tax</i> | 63.90 | 230.38 | 74.45 | 119.23 | 154.77 | 122.38 |
| Rs.10000-50000 | Assessees | 2521 | 6497 | 2524 | 3236 | 3883 | 2498 |
| | <i>Tax</i> | 709.04 | 2045.19 | 751.73 | 1084.47 | 979.60 | 718.81 |
| Rs.50000-1 lakh | Assessees | 1065 | 2410 | 943 | 1232 | 961 | 583 |
| | <i>Tax</i> | 852.36 | 2243.22 | 811.55 | 1189.06 | 774.14 | 540.01 |
| Rs.1 - 5 lakhs | Assessees | 1732 | 3681 | 1528 | 2258 | 1238 | 733 |
| | <i>Tax</i> | 4355.95 | 10711.8 4 | 4122.54 | 7244.15 | 2936.87 | 2010.44 |

(contd.)

Table.14.(contd.)

(Tax-Rs.In Lakhs)

| Tax Slabs | Assesseees / Tax | Chennai (N) | Chennai (S) | Chennai (E) | Chennai (C) | Tiruchy | Vellore |
|-------------------|------------------|-----------------|-----------------|----------------------------|-----------------|----------------------------|----------------|
| (1) | (2) | (3) | (4) | (5) | (6) | (7) | (8) |
| Rs.5 - 10 lakhs | Assesseees | 390 | 860 | 392 | 594 | 203 | 132 |
| | <i>Tax</i> | <i>3012.18</i> | <i>7758.24</i> | <i>3308.74</i> | <i>5578.26</i> | <i>1539.40</i> | <i>1183.25</i> |
| Rs.10 - 50 lakhs | Assesseees | 397 | 848 | 446 | 675 | 156 | 116 |
| | <i>Tax</i> | <i>9464.99</i> | <i>22821.15</i> | <i>11180.9</i> <i>5</i> | <i>18972.16</i> | <i>3760.63</i> | <i>3027.25</i> |
| Rs.50 - 100 lakhs | Assesseees | 42 | 134 | 90 | 117 | 40 | 16 |
| | <i>Tax</i> | <i>3211.37</i> | <i>11917.13</i> | <i>7514.89</i> | <i>11050.51</i> | <i>3138.62</i> | <i>1377.14</i> |
| Rs.1 - 10 crores | Assesseees | 50 | 156 | 103 | 143 | 36 | 8 |
| | <i>Tax</i> | <i>16097.53</i> | <i>47977.95</i> | <i>34313.2</i> <i>5</i> | <i>56234.69</i> | <i>10326.6</i> <i>0</i> | <i>3019.49</i> |
| Rs.10-20 crores | Assesseees | 6 | 14 | 9 | 9 | - | - |
| | <i>Tax</i> | <i>8013.48</i> | <i>22478.60</i> | <i>14007.0</i> <i>1</i> | <i>16742.18</i> | - | - |
| Rs.20-30 crores | Assesseees | 1 | 8 | 5 | 4 | - | - |
| | <i>Tax</i> | <i>2461.54</i> | <i>18604.61</i> | <i>11744.4</i> <i>5</i> | <i>11639.41</i> | - | - |

(contd.)

Table.14.(contd.)

(Tax-Rs.In Lakhs)

| Tax Slabs | Assesseees / Tax | Chennai (N) | Chennai (S) | Chennai (E) | Chennai (C) | Tiruchy | Vellore |
|-----------------|---------------------|----------------|----------------|----------------|----------------|----------|----------|
| (1) | (2) | (3) | (4) | (5) | (6) | (7) | (8) |
| Rs.30-40 crores | Assesseees | - | 3 | 1 | 5 | - | - |
| | <i>Tax</i> | - | 10905.35 | 3014.48 | 18343.46 | - | - |
| Rs.40-50 crores | Assesseees | - | 1 | 4 | 1 | - | - |
| | <i>Tax</i> | - | 4684.87 | 16233.95 | 4921.08 | - | - |
| Rs.50 crores | Assesseees | 3 | 4 | 4 | 7 | 3 | 2 |
| & above | <i>Tax</i> | 239565.5 | 510277.1 | 54299.83 | 306615.9 | 21031.00 | 31093.00 |
| | | 3 | 4 | | 6 | | |
| TOTAL | Assesseees | 11079 | 32039 | 12735 | 18052 | 16427 | 11280 |
| | <i>Tax</i> | 287837.0 | 672764.0 | 161414.0 | 459797.0 | 44793.00 | 44334.00 |
| | | 0 | 0 | 0 | 0 | | |

(contd.)

Table.14.(contd.)

(Tax-Rs.In Lakhs)

| Tax Slabs | Assessees/ Tax | Madu rai | Tiru nelveli | Coim batore | Salem | STATE | % |
|-----------------|-------------------|-------------|-----------------|----------------|---------|--------------|-------|
| (1) | (2) | (9) | (10) | (11) | (12) | (13) | (14) |
| Below Rs.1000 | Assessees | 9332 | 7256 | 20546 | 10815 | 85123 | 41.46 |
| | Tax | 4.71 | 3.24 | 9.14 | 6.67 | 45.10 | 0.00 |
| Rs.1000 - 5000 | Assessees | 2653 | 1953 | 3559 | 2431 | 20773 | 10.12 |
| | Tax | 85.21 | 53.83 | 134.42 | 100.68 | 738.41 | 0.04 |
| Rs.5000 - 10000 | Assessees | 1988 | 1644 | 2783 | 2144 | 17062 | 8.31 |
| | Tax | 160.97 | 116.16 | 270.29 | 200.29 | 1512.82 | 0.08 |
| Rs.10000-50000 | Assessees | 3859 | 3640 | 7306 | 4182 | 40146 | 19.55 |
| | Tax | 992.34 | 817.96 | 2373.73 | 1484.53 | 11957.6 1 | 0.61 |
| Rs.50000-1 lakh | Assessees | 1035 | 1022 | 2534 | 1482 | 13267 | 6.46 |
| | Tax | 819.46 | 713.74 | 2429.03 | 1395.17 | 11767.7 4 | 0.61 |
| Rs.1 - 5 lakhs | Assessees | 1390 | 1290 | 3702 | 1833 | 19385 | 9.44 |
| | Tax | 3322.48 | 2732.73 | 10881.1 2 | 5888.13 | 54206.2 5 | 2.79 |

(contd.)

Table.14.(contd.)

(Tax-Rs.In Lakhs)

| Tax Slabs | Assesseees / Tax | Madu rai | Tiru nelveli | Coim batore | Salem | STATE | % |
|-------------------|------------------|----------------|----------------|-----------------|-----------------|------------------|--------------|
| (1) | (2) | (9) | (10) | (11) | (12) | (13) | (14) |
| Rs.5 - 10 lakhs | Assesseees | 232 | 224 | 686 | 326 | 4039 | 1.97 |
| | <i>Tax</i> | <i>1818.07</i> | <i>1546.41</i> | <i>6387.22</i> | <i>3022.60</i> | <i>35154.37</i> | <i>1.81</i> |
| Rs.10 - 50 lakhs | Assesseees | 207 | 251 | 681 | 288 | 4065 | 1.98 |
| | <i>Tax</i> | <i>4863.37</i> | <i>5587.00</i> | <i>19125.47</i> | <i>8942.76</i> | <i>107745.71</i> | <i>5.55</i> |
| Rs.50 - 100 lakhs | Assesseees | 28 | 49 | 84 | 59 | 659 | 0.32 |
| | <i>Tax</i> | <i>2108.67</i> | <i>3425.96</i> | <i>7810.96</i> | <i>5640.23</i> | <i>57255.48</i> | <i>2.95</i> |
| Rs.1 - 10 crores | Assesseees | 32 | 34 | 75 | 57 | 691 | 0.34 |
| | <i>Tax</i> | <i>9583.72</i> | <i>6558.93</i> | <i>24233.41</i> | <i>20835.08</i> | <i>229217.65</i> | <i>11.80</i> |
| Rs.10 - 20 crores | Assesseees | - | - | 5 | - | 43 | 0.02 |
| | <i>Tax</i> | - | - | <i>8845.97</i> | - | <i>71264.24</i> | <i>3.67</i> |
| Rs.20 - 30 crores | Assesseees | - | - | 2 | 2 | 22 | 0.01 |
| | <i>Tax</i> | - | - | <i>4787.64</i> | <i>4742.71</i> | <i>53980.39</i> | <i>2.78</i> |

Table.14.(contd.)

(Tax-Rs.In Lakhs)

| Tax Slabs | Assesseees / Tax | Madurai | Tirunelveli | Coimbatore | Salem | STATE | % |
|-----------------------|------------------|----------|-------------|------------|----------|------------|--------|
| (1) | (2) | (9) | (10) | (11) | (12) | (13) | (14) |
| Rs.30 - 40 crores | Assesseees | - | - | 2 | 1 | 12 | 0.01 |
| | <i>Tax</i> | - | - | 6571.35 | 3272.15 | 42106.79 | 2.17 |
| Rs.40 - 50 crores | Assesseees | 1 | - | - | - | 7 | 0.00 |
| | <i>Tax</i> | 4181.00 | - | - | - | 30020.90 | |
| Rs.50 crores | Assesseees | - | 1 | 1 | - | 25 | 0.01 |
| and above | <i>Tax</i> | - | 11965.04 | 47014.04 | - | 1221861.54 | 62.91 |
| <i>TDS Collection</i> | - | - | - | - | - | 13505.00 | 0.70 |
| TOTAL | Assesseees | 20757 | 17364 | 41966 | 23620 | 205319 | 100.00 |
| | <i>Tax</i> | 27940.00 | 33521.00 | 140874.00 | 55531.00 | 1942310.00 | 100.00 |

**15. DIVISIONWISE TURNOVER SLAB WISE ASSESSEES AND
TAX REVENUE (VAT ACT) IN 2008-09**

(Tax-Rs.In Lakhs)

| Turnover Slabs | Assessee / Tax | Chennai (N) | Chennai (S) | Chennai (E) | Chennai (C) | Tiruchy | Vellore |
|-------------------|-------------------|----------------|----------------|----------------|----------------|---------|---------|
| (1) | (2) | (3) | (4) | (5) | (6) | (7) | (8) |
| Rs.0 - 3 lakhs | Assessee | 1953 | 9764 | 3181 | 5451 | 3771 | 2535 |
| | Tax | 52.00 | 189.00 | 65.00 | 99.00 | 58.00 | 40.00 |
| Rs.3 - 4 lakhs | Assessee | 354 | 1049 | 357 | 526 | 495 | 365 |
| | Tax | 31.00 | 119.00 | 36.00 | 52.00 | 29.00 | 20.00 |
| Rs.4 - 5 lakhs | Assessee | 306 | 887 | 324 | 423 | 447 | 307 |
| | Tax | 42.00 | 109.00 | 41.00 | 56.00 | 35.00 | 24.00 |
| Rs.5 - 10 lakhs | Assessee | 1220 | 3418 | 1289 | 1771 | 1680 | 1298 |
| | Tax | 253.00 | 682.00 | 253.00 | 369.00 | 193.00 | 148.00 |
| Rs.10 - 25 lakhs | Assessee | 2027 | 5436 | 2207 | 2760 | 3271 | 2255 |
| | Tax | 778.00 | 2200.00 | 889.00 | 1257.00 | 662.00 | 453.00 |
| Rs.25 - 50 lakhs | Assessee | 1528 | 3964 | 1614 | 2058 | 2353 | 1764 |
| | Tax | 1310.00 | 3533.00 | 1342.00 | 1972.00 | 865.00 | 717.00 |
| Rs.50 - 75 lakhs | Assessee | 731 | 1699 | 713 | 987 | 1023 | 684 |
| | Tax | 1030.00 | 2983.00 | 1122.00 | 1867.00 | 680.00 | 455.00 |

(contd.)

Table.15.(contd.)

(Tax-Rs.In Lakhs)

| Turnover Slabs | Assesseees / Tax | Chennai (N) | Chennai (S) | Chennai (E) | Chennai (C) | Tiruchy | Vellore |
|--------------------|------------------|-------------|-------------|-------------|-------------|---------|---------|
| (1) | (2) | (3) | (4) | (5) | (6) | (7) | (8) |
| Rs.75 - 100 lakhs | Assesseees | 484 | 1075 | 442 | 645 | 639 | 409 |
| | Tax | 913.00 | 2556.00 | 998.00 | 1652.00 | 584.00 | 443.00 |
| Rs.1 - 10 crores | Assesseees | 2078 | 4108 | 2116 | 2820 | 2488 | 1520 |
| | Tax | 11057.00 | 32353.00 | 14372.00 | 25537.00 | 6805.00 | 4825.00 |
| Rs.10 - 50 crores | Assesseees | 38 | 520 | 397 | 468 | 227 | 129 |
| | Tax | 10129.00 | 33529.00 | 20910.00 | 35740.00 | 7879.00 | 1721.00 |
| Rs.50 - 100 crores | Assesseees | 38 | 50 | 42 | 74 | 18 | 6 |
| | Tax | 6186.00 | 4846.00 | 10477.00 | 19895.00 | 2659.00 | 103.00 |
| Rs.100-200 crores | Assesseees | 16 | 33 | 27 | 34 | 8 | 6 |
| | Tax | 6869.00 | 26426.00 | 26628.00 | 30333.00 | 1316.00 | 3115.00 |
| Rs.200-300 crores | Assesseees | 6 | 9 | 9 | 12 | 3 | - |
| | Tax | 5967.00 | 8964.00 | 10178.00 | 14347.00 | 1237.00 | - |

(contd.)

Table.15.(contd.)

(Tax-Rs.In Lakhs)

| Turnover Slabs | Assesseees / Tax | Chennai (N) | Chennai (S) | Chennai (E) | Chennai (C) | Tiruchy | Vellore |
|-----------------------|------------------|-------------|-------------|-------------|-------------|----------|----------|
| (1) | (2) | (3) | (4) | (5) | (6) | (7) | (8) |
| Rs.300-400 crores | Assesseees | 1 | 5 | 4 | 7 | 1 | - |
| | <i>Tax</i> | 1014.00 | 5519.00 | 3863.00 | 8828.00 | 760.00 | - |
| Rs.400-500 crores | Assesseees | 1 | 8 | 3 | 3 | - | 2 |
| | <i>Tax</i> | 205.00 | 19423.00 | 6990.00 | 29407.00 | - | 31093.00 |
| Rs.500 crores | Assesseees | 6 | 14 | 10 | 13 | 3 | 1 |
| and above | <i>Tax</i> | 242001.00 | 529333.00 | 63250.00 | 288386.00 | 21031.00 | 1177.00 |
| | | | | | | 0 | |
| <i>TDS collection</i> | - | - | - | - | - | - | - |
| TOTAL | Assesseees | 11079 | 32039 | 12735 | 18052 | 16427 | 11280 |
| | <i>Tax</i> | 287837.00 | 672764.00 | 161414.00 | 459797.00 | 44793.00 | 44334.00 |
| | | | | 0 | | 0 | 0 |

Table.15.(contd.)

(Tax-Rs.In Lakhs)

| Turnover Slabs | Assesseees / Tax | Madu rai | Tiru nelveli | Coim batore | Salem | STATE | % |
|-------------------|---------------------|-------------|-----------------|----------------|---------|----------|-------|
| (1) | (2) | (9) | (10) | (11) | (12) | (13) | (14) |
| Rs.0 - 3 lakhs | Assesseees | 5955 | 4393 | 14044 | 7844 | 58903 | 28.69 |
| | <i>Tax</i> | 86.00 | 58.00 | 119.00 | 132.00 | 978.00 | 0.05 |
| Rs.3 - 4 lakhs | Assesseees | 946 | 616 | 1394 | 819 | 6899 | 3.36 |
| | <i>Tax</i> | 46.00 | 30.00 | 102.00 | 67.00 | 532.00 | 0.03 |
| Rs.4 - 5 lakhs | Assesseees | 757 | 553 | 1214 | 717 | 5935 | 2.89 |
| | <i>Tax</i> | 50.00 | 32.00 | 119.00 | 85.00 | 593.00 | 0.03 |
| Rs.5 - 10 lakhs | Assesseees | 2633 | 1931 | 4382 | 2428 | 22048 | 10.74 |
| | <i>Tax</i> | 266.00 | 195.00 | 696.00 | 409.00 | 3464.00 | 0.18 |
| Rs.10 - 25 lakhs | Assesseees | 3735 | 3219 | 6599 | 3759 | 35269 | 17.18 |
| | <i>Tax</i> | 780.00 | 630.00 | 2257.00 | 1179.00 | 11085.00 | 0.57 |
| Rs.25 - 50 lakhs | Assesseees | 2574 | 2407 | 4659 | 2698 | 25619 | 12.48 |
| | <i>Tax</i> | 1043.00 | 885.00 | 3172.00 | 1751.00 | 16590.00 | 0.85 |
| Rs.50 - 75 lakhs | Assesseees | 1012 | 1004 | 2206 | 1179 | 11235 | 5.47 |
| | <i>Tax</i> | 868.00 | 701.00 | 2599.00 | 1307.00 | 13612.00 | 0.70 |

(contd.)

Table.15.(contd.)

(Tax-Rs.In Lakhs)

| Turnover Slabs | Assessees / Tax | Madurai | Tirunelveli | Coimbatore | Salem | STATE | % |
|--------------------|-----------------|---------|-------------|------------|----------|-----------|-------|
| (1) | (2) | (9) | (10) | (11) | (12) | (13) | (14) |
| Rs.75 - 100 lakhs | Assessees | 634 | 598 | 1435 | 775 | 7136 | 3.48 |
| | Tax | 694.00 | 716.00 | 2385.00 | 1216.00 | 12157.00 | 0.63 |
| Rs.1 - 10 crores | Assessees | 2271 | 2319 | 5336 | 3006 | 28061 | 13.67 |
| | Tax | 7257.00 | 8654.00 | 25270.00 | 12168.00 | 148298.00 | 7.63 |
| Rs.10 - 50 crores | Assessees | 202 | 282 | 598 | 335 | 3488 | 1.70 |
| | Tax | 6571.00 | 6177.00 | 19737.00 | 14295.00 | 156688.00 | 8.07 |
| Rs.50 - 100 crores | Assessees | 24 | 29 | 68 | 41 | 414 | 0.20 |
| | Tax | 4121.00 | 2164.00 | 11590.00 | 8611.00 | 70652.00 | 3.64 |
| Rs.100-200 crores | Assessees | 10 | 9 | 15 | 10 | 168 | 0.08 |
| | Tax | 1675.00 | 645.00 | 7502.00 | 3912.00 | 108421.00 | 5.58 |
| Rs.200-300 crores | Assessees | 2 | 1 | 7 | 6 | 55 | 0.03 |
| | Tax | 295.00 | 34.00 | 4150.00 | 7982.00 | 53154.00 | 2.74 |

Table.15.(contd.)

(Tax-Rs.In Lakhs)

| Turnover Slabs | Assesseees / Tax | Madurai | Tirunelveli | Coimbatore | Salem | STATE | % |
|-----------------------|------------------|----------|-------------|------------|----------|------------|--------|
| (1) | (2) | (9) | (10) | (11) | (12) | (13) | (14) |
| Rs.300-400 crores | Assesseees | 1 | 1 | 3 | 1 | 20 | 0.01 |
| | Tax | 7.00 | 371.00 | 4220.00 | 379.00 | 24961.00 | 1.28 |
| Rs.400-500 crores | Assesseees | - | - | 1 | - | 16 | 0.01 |
| | Tax | - | - | 2281.00 | - | 89399.00 | 4.60 |
| Rs.500 crores | Assesseees | 1 | 2 | 5 | 1 | 53 | 0.03 |
| and above | Tax | 4181.00 | 12229.00 | 54595.00 | 2038.00 | 1218221.00 | 62.72 |
| | | | | | | 0 | |
| <i>TDS collection</i> | - | - | - | - | - | 13505.00 | 0.70 |
| TOTAL | Assesseees | 20757 | 17364 | 41966 | 23620 | 205319 | 100.00 |
| | Tax | | | 140874.0 | | 1942310.0 | |
| | | 27940.00 | 33521.00 | 0 | 55531.00 | 0 | 100.00 |

**16. CT DISTRICT / ZONEWISE ASSESSEES AND
TAX REVENUE UNDER VAT ACT IN 2008-09**

| Division | District / Zone | No.of Assesseees | | Total Tax Revenue (Rs.In Crores) | |
|---------------|-----------------|------------------|---------|----------------------------------|---------|
| | | 2007-08 | 2008-09 | 2007-08 | 2008-09 |
| (1) | (2) | (3) | (4) | (5) | (6) |
| CHENNAI (N) | Zone - I | 3458 | 3587 | 171.97 | 196.17 |
| | Zone - II | 3512 | 3643 | 72.98 | 82.05 |
| | Zone - III | 3692 | 3830 | 82.41 | 113.26 |
| | FTAC - III | 19 | 19 | 2069.72 | 2486.66 |
| | Enft (N) | -- | -- | 0.11 | 0.23 |
| | TOTAL | | 10681 | 11079 | 2397.19 |
| CHENNAI (S) | Zone - VII | 11850 | 13459 | 437.40 | 491.05 |
| | Zone - X | 11934 | 13555 | 429.37 | 497.37 |
| | Chengalpattu | 4408 | 5007 | 318.17 | 521.56 |
| | FTAC - IV | 18 | 18 | 4505.31 | 5217.66 |
| | Enft (S) | -- | -- | -- | -- |
| | TOTAL | | 28210 | 32039 | 5690.25 |

(contd.)

Table.16 (contd.)

| (1) | (2) | (3) | (4) | (5) | (6) |
|---------------|----------------|-------|-------|---------|---------|
| CHENNAI (E) | Zone - V | 3217 | 3465 | 269.63 | 311.91 |
| | Zone - VI | 3855 | 4152 | 362.24 | 339.84 |
| | Zone - 1X | 4730 | 5094 | 108.13 | 128.73 |
| | FTAC - I | 24 | 24 | 703.22 | 833.66 |
| | Enft (E) | - | -- | -- | -- |
| | TOTAL | 11826 | 12735 | 1443.22 | 1614.14 |
| CHENNAI (C) | Zone - IV | 4963 | 5106 | 325.74 | 355.92 |
| | Zone - VIII | 6550 | 6739 | 523.59 | 623.67 |
| | Zone - XI | 6000 | 6173 | 436.20 | 600.50 |
| | FTAC - II | 34 | 34 | 2664.12 | 3017.72 |
| | Enft (C) | - | -- | -- | 0.16 |
| | TOTAL | 17547 | 18052 | 3949.65 | 4597.97 |
| TIRUCHY | Tiruchy(Town) | 5362 | 5990 | 193.96 | 222.26 |
| | Karur | 2988 | 3338 | 124.04 | 151.77 |
| | Thanjavur | 2762 | 3086 | 20.08 | 24.84 |
| | Kumbakonam | 2048 | 2288 | 17.43 | 23.99 |
| | Pudukkottai | 1544 | 1725 | 20.92 | 25.07 |
| | TOTAL | 14704 | 16427 | 376.43 | 447.93 |

(contd.)

Table.16 (contd.)

| (1) | (2) | (3) | (4) | (5) | (6) |
|-------------|-----------------|-------|-------|--------|--------|
| VELLORE | Vellore | 3498 | 3295 | 47.12 | 78.54 |
| | Tiruvannamalai | 2421 | 2716 | 20.19 | 22.82 |
| | Cuddalore | 2487 | 2790 | 42.92 | 54.80 |
| | Villupuram | 1647 | 1849 | 262.04 | 287.18 |
| | TOTAL | 10053 | 11280 | 372.27 | 443.34 |
| MADURAI | Madurai (East) | 7510 | 8353 | 73.35 | 93.49 |
| | Madurai (West) | 5645 | 6278 | 83.32 | 104.16 |
| | Dindigul | 2927 | 3255 | 61.10 | 65.71 |
| | Sivaganga | 2581 | 2871 | 11.88 | 16.04 |
| | TOTAL | 18663 | 20757 | 229.65 | 279.40 |
| TIRUNELVELI | Tirunelveli | 3300 | 5033 | 82.80 | 96.97 |
| | Nagercoil | 1641 | 2503 | 22.29 | 30.43 |
| | Tuticorin | 1995 | 3043 | 39.74 | 46.36 |
| | Virudhunagar | 1346 | 2053 | 38.69 | 100.51 |
| | Sivakasi | 3103 | 4732 | 52.99 | 60.94 |
| | TOTAL | 11385 | 17364 | 236.51 | 335.21 |

(contd.)

Table.16 (contd.)

| (1) | (2) | (3) | (4) | (5) | (6) |
|----------------|--------------|--------|--------|----------|----------|
| COIMBATORE | Zone - I | 6698 | 8086 | 698.55 | 746.23 |
| | Zone - II | 6087 | 7349 | 139.45 | 177.47 |
| | Zone - III | 9672 | 11677 | 171.61 | 183.72 |
| | FTAC - I | 15 | 15 | 43.61 | 44.22 |
| | FTAC - II | 17 | 17 | 40.05 | 35.33 |
| | Pollachi | 1608 | 1941 | 31.67 | 36.44 |
| | Tiruppur | 9567 | 11551 | 147.28 | 167.20 |
| | The Nilgiris | 1128 | 1362 | 13.65 | 18.13 |
| | TOTAL | 34792 | 41966 | 1285.87 | 1408.74 |
| SALEM | Salem | 5336 | 5767 | 107.15 | 119.74 |
| | Namakkal | 4981 | 5384 | 73.84 | 82.24 |
| | Erode | 8051 | 8703 | 105.50 | 120.44 |
| | Dharmapuri | 3485 | 3766 | 191.17 | 232.89 |
| | TOTAL | 21853 | 23620 | 477.66 | 555.31 |
| TDS Collection | | - | - | 99.93 | 135.05 |
| STATE - TOTAL | | 179714 | 205319 | 16558.63 | 19423.10 |

17.DIVISIONWISE NUMBER OF ASSESSMENTS FINALISED

(In Number)

| Division | 2007-08 | | | | 2008-09 | | | |
|---------------|--------------|--------------|--------------|--------------|-------------|---------------|--------------|--------------|
| | Assessment | | ' O ' Cases | | Assessment | | ' O ' Cases | |
| | Current | Arrear | Current | Arrear | Current | Arrear | Current | Arrear |
| Chennai (N) | 14788 | 16851 | 3330 | 2413 | 227 | 8692 | 293 | 3546 |
| Chennai (S) | 4237 | 8130 | 3538 | 5802 | 1162 | 21339 | 1951 | 8493 |
| Chennai (E) | 1944 | 4220 | 418 | 1984 | 64 | 12733 | 332 | 3504 |
| Chennai (C) | 4944 | 6285 | 62 | 1936 | 214 | 17466 | 64 | 3524 |
| Tiruchy | 8448 | 3715 | 10900 | 5797 | 228 | 7852 | 6225 | 5748 |
| Vellore | 3136 | 2530 | 7869 | 5941 | 42 | 9854 | 946 | 11496 |
| Madurai | 225 | 3625 | 100 | 9276 | 154 | 10956 | 61 | 4033 |
| Tirunelveli | 1823 | 8480 | 26277 | 10414 | 123 | 12323 | 1279 | 7231 |
| Coimbatore | 1461 | 8467 | 3422 | 4040 | 417 | 29169 | 524 | 4488 |
| Salem | 2989 | 8315 | 4404 | 13226 | 369 | 19677 | 2590 | 14371 |
| STATE | 43995 | 70618 | 60320 | 60829 | 3000 | 150064 | 14265 | 66434 |

RECEIPTS AND EXPENDITURE

(Rs.In Crores)

| Minor Head | 2003-04 | 2004-05 | 2005-06 | 2006-07 | 2007-08 | 2008-09 |
|---------------------------------------|---------|---------|---------|---------|---------|---------|
| Receipts | 11757 | 13908 | 16615 | 19217 | 19952 | 22570 |
| Expenditure | 93.7 | 102.34 | 110.44 | 128.52 | 143.73 | 187.27 |
| Percentage of expenditure to receipts | 0.80% | 0.74% | 0.66% | 0.79% | 0.72% | 0.83% |

**19. NUMBER OF CINEMA HOUSES AND
ENTERTAINMENT TAX COLLECTED IN 2008-09**

| Classification | Chen nai (N) | Chen nai (S) | Chen nai (E) | Chen nai (C) | Tri chy | Vell ore | Ma du rai | Tiru nel veli | Coim ba tore | Sal em | STA TE |
|---------------------------------------|-------------------------------|-------------------------------|-------------------------------|-------------------------------|--------------------|---------------------|--------------------------|------------------------------|-----------------------------|-------------------|-------------------|
| I. Permanent | | | | | | | | | | | |
| a) A / C | - | 41 | 27 | 14 | 25 | 27 | 25 | 1 | 22 | 19 | 201 |
| b) Non- A/C | 1 | 111 | 8 | 19 | 137 | 161 | 155 | 122 | 105 | 236 | 1065 |
| Sub - Total | 1 | 155 | 35 | 33 | 162 | 188 | 180 | 123 | 127 | 255 | 1263 |
| II. Semi- Permanent | - | 6 | - | - | 16 | 30 | 17 | 19 | 16 | 39 | 146 |
| III. Touring | - | 12 | - | 3 | 15 | 16 | 45 | 15 | 8 | 26 | 150 |
| IV. Open Air | - | 2 | - | - | - | - | - | - | - | 1 | 3 |
| GRAND TOTAL | 1 | 178 | 35 | 36 | 193 | 234 | 242 | 157 | 151 | 321 | 1556 |
| ET Collected (Rs.inCrores) | - | 0.51 | 4.03 | 1.03 | 0.35 | 0.14 | 0.19 | 0.28 | 1.24 | 0.79 | 8.56 |

**19. NUMBER OF CINEMA HOUSES AND
ENTERTAINMENT TAX COLLECTED –YEAR WISE**

| Classification | 2004-05 | 2005-06 | 2006-07 | 2007-08 | 2008-09 |
|--|---------|---------|---------|---------|---------|
| <u>I. Permanent</u> | | | | | |
| a) Air Conditioned | 176 | 167 | 160 | 196 | 196 |
| b) Non-Air Conditioned | 1103 | 1096 | 1112 | 1006 | 1065 |
| Sub - Total | 1279 | 1263 | 1272 | 1202 | 1261 |
| II. Semi Permanent | 172 | 144 | 142 | 149 | 143 |
| III. Touring | 271 | 221 | 212 | 176 | 145 |
| IV. Open Air | 4 | 9 | 2 | 3 | 3 |
| GRAND TOTAL | 1726 | 1637 | 1628 | 1530 | 1552 |
| ET Collected (Rs.in Crores) | 53 | 36 | 18 | 9 | 9 |

**20. C.T.DISTRICT / ZONEWISE NUMBER OF CINEMA HOUSES,
CABLE T.V. OPERATORS AND ENTERTAINMENT TAX COLLECTED IN 2008-09**

(Rs.In Crores)

| C.T. Division | C.T.District / Zone | Permanent | | Semi Permanent | Touring | Open Air | TOTAL | E.T Collection | No.Of Cable T.V operators | E.T collected from Cable T.V Operators | No.of Amusement Park | E.T collected from Amusement Park | Other E.TCollection | Total E.TCollection | Collection during the previous year |
|-----------------|---------------------|-----------|--------|----------------|---------|----------|-------|----------------|---------------------------|--|----------------------|-----------------------------------|---------------------|---------------------|-------------------------------------|
| | | A/C | NonA/C | | | | | | | | | | | | |
| 1 | 2 | 3 | 4 | 5 | 6 | 7 | 8 | 9 | 10 | 11 | 12 | 13 | 14 | 15 | 16 |
| Chennai (North) | Zone - I | - | - | - | - | - | - | - | 2 | 0.00 | - | - | - | 0.00 | -- |
| | Zone - II | - | 1 | - | - | - | 1 | 0.00 | 3 | 0.00 | - | - | - | 0.00 | -- |
| | Zone - III | - | - | - | - | - | - | - | 3 | 0.00 | - | - | - | 0.00 | -- |
| | FTAC - III | - | - | - | - | - | - | - | - | - | - | - | - | - | -- |
| | Enft (N) | - | - | - | - | - | - | - | - | - | - | - | - | - | -- |
| | TOTAL | | - | 1 | - | - | - | 1 | 0.00 | 8 | 0.00 | - | - | - | 0.00 |

Table.20 (contd.)

| 1 | 2 | 3 | 4 | 5 | 6 | 7 | 8 | 9 | 10 | 11 | 12 | 13 | 14 | 15 | 16 |
|------------------------------|---------------------|----|-----|---|----|---|-----|------|-----|------|----|------|------|------|------|
| Chennai (South) | Zone - VII | 7 | 23 | - | 3 | 2 | 35 | 0.15 | 144 | 0.00 | 3 | 0.82 | 0.13 | 1.10 | 4.25 |
| | Zone - X | 21 | 24 | - | - | - | 45 | 0.08 | 154 | 0.00 | - | - | - | 0.08 | |
| | Kancheepuram | 13 | 64 | 9 | 9 | - | 95 | 0.28 | 75 | 0.00 | 4 | 0.45 | - | 0.73 | |
| | FTAC - IV | - | - | - | - | - | - | - | - | - | - | - | - | - | |
| | Enft (S) | - | - | - | - | - | - | - | - | - | - | - | - | - | |
| | TOTAL | 41 | 111 | 9 | 12 | 2 | 175 | 0.51 | 373 | 0.00 | 7 | 1.27 | 0.13 | 1.91 | |
| Chennai (East) | Zone - V | 12 | - | - | - | - | 12 | 0.40 | 8 | 0.00 | - | - | - | 0.40 | 5.10 |
| | Zone - VI | 13 | 1 | - | - | - | 14 | 3.49 | 25 | 0.00 | - | - | - | 3.49 | |
| | Zone - IX | 2 | 7 | - | - | - | 9 | 0.14 | 43 | 0.00 | - | - | - | 0.14 | |
| | FTAC - I | - | - | - | - | - | - | - | - | - | - | - | - | - | |
| | Enft (E) | - | - | - | - | - | - | - | - | - | - | - | - | - | |
| | TOTAL | 27 | 8 | - | - | - | 35 | 4.03 | 76 | 0.00 | - | - | - | 4.03 | |
| Chennai (Central) | Zone - IV | 2 | 3 | - | 3 | - | 8 | 0.02 | 14 | 0.00 | 2 | 0.01 | - | 0.03 | 2.65 |
| | Zone - VIII | 11 | 16 | - | - | - | 27 | 1.01 | 67 | 0.00 | 2 | 0.14 | - | 1.15 | |
| | Zone - XI | 1 | - | - | - | - | 1 | 0.00 | 16 | 0.00 | 1 | 0.01 | - | 0.01 | |
| | FTAC - II | - | - | - | - | - | - | - | - | - | - | - | - | - | |
| | Enft (C) | - | - | - | - | - | - | - | - | - | - | - | - | - | |
| | TOTAL | 14 | 19 | - | 3 | - | 36 | 1.03 | 97 | 0.00 | 5 | 0.16 | - | 1.19 | |

Table.20 (contd.)

| 1 | 2 | 3 | 4 | 5 | 6 | 7 | 8 | 9 | 10 | 11 | 12 | 13 | 14 | 15 | 16 |
|---------|----------------|-----------|------------|-----------|-----------|----------|------------|-------------|------------|-------------|----------|-------------|-------------|-------------|------|
| Tiruchy | Tiruchy | 12 | 20 | 0 | - | - | 32 | 0.08 | 40 | 0.00 | - | - | - | 0.08 | 2.52 |
| | Karur | - | 36 | 11 | 0 | - | 47 | 0.10 | 136 | 0.00 | - | - | - | 0.10 | |
| | Thanjavur | 4 | 29 | 3 | 8 | - | 44 | 0.06 | 136 | 0.00 | - | - | 0.0 | 0.06 | |
| | Kumbakonam | 5 | 26 | 0 | 6 | - | 37 | 0.09 | 100 | 0.00 | - | - | - | 0.09 | |
| | Pudukkottai | 4 | 26 | 2 | 1 | - | 33 | 0.02 | 165 | 0.00 | - | - | - | 0.02 | |
| | TOTAL | 25 | 137 | 16 | 15 | - | 193 | 0.35 | 577 | 0.00 | - | - | 0.00 | 0.35 | |
| Vellore | Vellore | 0 | 56 | 8 | 14 | - | 78 | 0.07 | 63 | 0.00 | - | - | 0.01 | 0.08 | 0.76 |
| | Tiruvannamalai | - | 58 | 10 | 1 | - | 69 | 0.03 | 51 | 0.00 | 1 | 0.01 | 0.01 | 0.05 | |
| | Cuddalore | 5 | 34 | 8 | 1 | - | 48 | 0.02 | 67 | 0.00 | - | - | 0.01 | 0.03 | |
| | Villupuram | 22 | 13 | 4 | 0 | - | 39 | 0.02 | 78 | 0.00 | - | - | - | 0.02 | |
| | TOTAL | 27 | 161 | 30 | 16 | - | 234 | 0.14 | 259 | 0.00 | 1 | 0.01 | 0.03 | 0.18 | |
| Madurai | Madurai (East) | 14 | 25 | 1 | 2 | - | 42 | 0.08 | 46 | 0.00 | - | - | - | 0.08 | 1.43 |
| | Madurai (West) | 4 | 71 | 7 | 12 | - | 94 | 0.03 | 60 | 0.00 | 1 | 0.22 | - | 0.25 | |
| | Dindigul | 6 | 27 | 6 | 19 | - | 58 | 0.06 | 164 | 0.00 | - | - | 0.01 | 0.07 | |
| | Sivaganga | 1 | 32 | 3 | 12 | - | 48 | 0.02 | 64 | 0.00 | - | - | - | 0.02 | |
| | TOTAL | 25 | 155 | 17 | 45 | - | 242 | 0.19 | 334 | 0.00 | 1 | 0.22 | 0.01 | 0.42 | |

Table.20 (contd.)

| 1 | 2 | 3 | 4 | 5 | 6 | 7 | 8 | 9 | 10 | 11 | 12 | 13 | 14 | 15 | 16 |
|-------------|--------------|-----|------|-----|-----|---|------|------|------|------|----|------|------|-------|-------|
| Tirunelveli | Tirunelveli | 1 | 43 | 10 | 9 | - | 63 | 0.08 | 202 | 0.00 | - | - | - | 0.08 | 1.50 |
| | Nagercoil | - | 16 | 1 | - | - | 17 | 0.12 | 128 | 0.00 | - | - | - | 0.12 | |
| | Tuticorin | - | 26 | 1 | 4 | - | 31 | 0.05 | 62 | 0.00 | - | - | - | 0.05 | |
| | Virudhunagar | - | 12 | 3 | 1 | - | 16 | 0.02 | 66 | 0.00 | - | - | - | 0.02 | |
| | Sivakasi | - | 25 | 4 | 1 | - | 30 | 0.01 | 92 | 0.00 | - | - | - | 0.01 | |
| | TOTAL | 1 | 122 | 19 | 15 | - | 157 | 0.28 | 550 | 0.00 | - | - | - | 0.28 | |
| Coimbatore | Zone - I | 7 | 19 | - | - | - | 26 | 0.32 | 34 | 0.00 | 1 | 0.06 | - | 0.38 | 4.28 |
| | Zone - II | 5 | 22 | - | 1 | - | 28 | 0.49 | 37 | 0.00 | 1 | 0.52 | - | 1.01 | |
| | Zone - III | 3 | 6 | 10 | 1 | - | 20 | 0.11 | 27 | 0.00 | - | - | - | 0.11 | |
| | Pollachi | - | 20 | 1 | 3 | - | 24 | 0.20 | 64 | 0.00 | 1 | 0.01 | - | 0.21 | |
| | Tiruppur | 7 | 31 | 5 | 3 | - | 46 | 0.09 | 63 | 0.00 | 1 | 0.06 | - | 1.15 | |
| | The Nilgiris | - | 7 | - | - | - | 7 | 0.03 | 45 | 0.00 | - | - | 0.13 | 0.16 | |
| | TOTAL | 22 | 105 | 16 | 8 | - | 151 | 1.24 | 270 | 0.00 | 4 | 1.65 | 0.13 | 3.02 | |
| Salem | Salem | 12 | 38 | 1 | - | - | 51 | 0.40 | 60 | 0.01 | 3 | 0.01 | - | 0.42 | 2.33 |
| | Namakkal | 4 | 76 | 22 | 2 | - | 104 | 0.05 | 138 | 0.00 | 1 | 0.02 | 0.01 | 0.08 | |
| | Erode | 3 | 56 | 13 | 23 | 1 | 96 | 0.29 | 140 | 0.00 | - | - | - | 0.29 | |
| | Dharmapuri | - | 66 | 3 | 1 | - | 70 | 0.05 | 66 | 0.00 | - | 0.01 | 0.01 | 0.07 | |
| | TOTAL | 19 | 236 | 39 | 26 | 1 | 321 | 0.79 | 404 | 0.01 | 4 | 0.04 | 0.02 | 0.86 | |
| GRAND TOTAL | | 201 | 1055 | 146 | 140 | 3 | 1545 | 8.56 | 2948 | 0.01 | 22 | 3.35 | 0.32 | 12.24 | 24.90 |

21. TAX RATES UNDER TAMIL NADU ENTERTAINMENT TAX ACT 1939
(w.e.f. 04.10.2004)

| Sl. No. | Type of Area | Rate of Tax |
|---------|--|---|
| 1. | Municipal Corporations, Municipalities, Special Grade Theatres, Permanent and Semi permanent within 5 kms from the outer peripherals limits of these areas | 15% on the gross payment for admission for a new film (Other than Tamil film). |
| 2. | -do- | 10% on the gross payment for admission for an old film (Other than Tamil film). |
| 3. | Other areas (Other than item 1 above) | 10% on the gross payment for admission for old or new film (Other than Tamil film). |
| 4. | All Areas | 15% on the gross payment of admission for dubbed films |
| 5 | All Areas (G.O.No.147 CT & R Dept. Dated 20.11.2006) | No Entertainment Tax is payable on the Old/New film, if the film is named in Tamil (w.e.f.22.07.2006) |

TAXATION ON CABLE T.V. OPERATORS (w.e.f. 01.04.2008)

| Sl. No. | Type of Area | Quantum of Amount |
|---------|---|-------------------|
| 1. | Within the limits of the Municipal Corporations of Chennai, Madurai, Coimbatore, Tiruchirapalli, Tirunelveli, Salem or any other Corporation that may be constituted under any law for the time being in force. | Tax Exempted. |

(contd.)

Table 21 (contd.)

| | | |
|-----------|---|----------------------|
| 2. | Within the limits of the Municipalities constituted under the Tamil Nadu District Municipalities Act 1920 (Tamil Nadu Act V of 1920) | Tax Exempted |
| 3. | Within the limits of Town Panchayats constituted under the Tamil Nadu District Municipalities Act 1920 (Tamil Nadu Act V of 1920) or any other area not specified in items (1), (2) or (4) | Tax Exempted. |
| 4. | Within the limits of Village Panchayats constituted under the Tamil Nadu Panchayats Act 1994 (Tamil Nadu Act 21 of 1994) | Tax Exempted |

TAXATION ON AMUSEMENT (w.e.f. 30.12.2002)

| Sl. No. | Amusement | Rate of Tax |
|----------------|---|--------------------|
| 1. | Payment for admission to any Amusement arcade or amusement park or theme part or the like. | 10% |

TAXATION ON RECREATION PARLOURS (w.e.f. 01.11.2001)

| Sl. No. | Recreation Parlours | Rate of Tax |
|----------------|--|--------------------|
| 1. | Payment to recreation Parlours where a game such as Bowling, Billards, Snooker or the like is provided (Section 4-G of the TNET Act). | 20% |

22 .VAT - TAX RATEWISE SELECTED COMMODITIES - 2008-09

Rate of Tax - 1% – Part A of the First Schedule

1. Bullion – Gold, Silver and Platinum
 2. Gold, Silver, Pearls, noble metals, semi precious stones and articles made of gold and silver.
 3. Precious stones like diamonds, emeralds, rubies, pearls, natural or cultured, cats eye, sapphires, carbuncle or garnets etc.,
 4. Worn-out or beaten jewellery.
-

Rate of Tax – 4% – Part B of the First Schedule

1. Acids and chemicals of all kinds
2. Agricultural implements not operated manually or not driven by animals, sprayers, sprinklers, drip irrigation equipments including their parts and accessories
3. a. All types of yarn
b. Sewing threads of all kinds
c. Waste of all types of yarn and sewing thread.
4. All utensils other than those specified in the Fourth Schedule
5. Aluminium conductor Steel reinforced (ACSR)
6. Arecanut, betel nut, scented nut, seeval whether roasted or scented & arecanut powder
7. a. Articles and jewellery made of rolled gold and imitation gold
b. Imitation Jewellery
8. Unbranded Bakery products
9. Bamboo
10. Bark of plants, dry plant and dry flower
11. Basic chromium sulphate, sodium bi-chromate and Bleach liquid

12. Bearings
13. Beds, Pillows and quilts made of cotton or silk cotton
14. Bed Sheet, other than those specified in IV Schedule
15. Beedi Leaves
16. Beltings
17. Biomass briquettes
18. Bitumen
19. Blue Metal
20. Bolts, nuts , screws and fasteners
21.
 - a. Brick of all kinds including fly ash bricks, refractory bricks etc.
 - b. Brick-bats, brick ballast, hollow block bricks, cement hollow blocks
 - c. Country bricks and country tiles made of baked clay and other machine made or Handmade.
 - d. Crog of (a) to (c)
22. Buckers and kudams made of iron and steel, plastic or other materials
23. Capital Goods as described in Section 2 (11) of the Act
24.
 - a. Centrifugal and monoblock, submersible pump set for water handling & parts thereof
 - b. Pump sets of 3 H.P. & 5 H.P.
25.
 - i. Chemical fertilizers
 - ii. Insecticides, pesticides, rodenticides, germicides, weedicides, fungicides etc.,
 - iii. Insect repellent coils, mats, liquids and creams and
 - iv. Mosquito destroyers, insect devices etc.
26. Clay including fire clay, fine china clay and ball clay
27. Coal tar
28. Coffee beans and seeds, cocoa pod and beans and chicory
29. Coir Products excluding mattresses
30. Colour boxes, crayons, painting boxes, painting water colours etc.
31. Combs
32. Communication equipments such as Private Branch Exchange etc.,

33. Computer Stationery
34. Cottage cheese
35. Cotton Waste
36. Crucibles
37. Cups, tumblers and plates of paper and plastic
38. Cycles, bi-cycles, tri-cycles, including delivery tri-cycles etc.,
39. Declared goods as specified in Section 14 of the Central Sales Tax Act 1956 other than those specified elsewhere in any of the Schedules.
40. Door Mats, Handicrafts, table mats, wall hangings made of jute
41. Dhoop
42. Drugs and medicines including vaccines, syringes and dressings etc.
43. Dyes
44. Electrodes and soldering wires
45. Exercise Books, graph book and laboratory note book- other than specified in IV Sch.
46. Feeding bottles and nipples
47. Fibres of all types and their waste other than those specified in the IV Schedule.
48. Fly ash (Other than those specified in IV Sch) Coal ash of all kinds and clinker
49. Foods and food preparations and mixes including instant foods, coconut milks powder, pickles, sweets, cheese, confectionery, chocolates, toffees and savories etc. (unbranded)
50. Fried and roasted grams, peas and pulses, dhall, chillies, coriander, turmeric etc.
51. Fried groundnut kernel
52. Glass Beads and Glass marbles
53. Glass bottles whether old or used.
54. Glucose
55.
 - i. Handmade embroidery products
 - ii. Handmade paper including handmade paper board and
 - iii. Handmade ultramarine blue, handmade washing blue etc.
56.
 - i. Hair and body cleaning powders containing shikakai, boonthikkottai etc.
 - ii. Scouring or cleaning powder other than branded and hand made soaps etc.

57. Helmets
58. Honey ii. Bees Wax
59. Hosiery Goods ii. Junnadi Goods
60. Human Hair, Wigs
61. Husk and bran of all cereals, pulses and grams-other than specified in IV Sch.
62. Ice
63. Ice creams sold without brand name
64. Industrial cables (High voltage cables, XLPE Cables, jelly filled etc.
65. Industrial Inputs for use in or in connection with the manufacture of goods in the State, packing materials and labels, as notified by the Government.
66. Information Technology products as notified by the Government
67. Insulators
68. Intangible goods like copyright, patent, REP licence.
69. Jari of all kinds including matallic yarn, metallicjari yarn, metallic plastic yarn etc.
70. Kerosene sold through Public Distribution System
71. Khoya/Khoa
72. Knitting wool
73. Lac and shellac
74. (i) Lemon grass oil, (ii) Laurel oil (iii) Ginger grass oil
75. Light roofing sheets obtained by immersing paper mat in bitumen
76. Lignite
77. Linear alkyl benezene (LAB), Sulphonic Acid, Alfa Olefin and Sulphonate
78. Maize products
79. Medical equipment/ devices and implants
80. Milk Food and milk products etc.
81. Mixed PVC stablizer
82. Moulded plastic footwear, hawai chappals and straps other than spc. IV Sch.
83. Napa Slabs (rough flooring stones)
84. Napthalene balls

85. News
86. Non-alcoholic beverages sold without a brand name.
87. i. Non-ferrous metal and alloys
 - ii. Metal powder including metal pastes of all types and grades etc.
 - iii. All metal castings
 - iv. Extrusions of non-ferrous metals such as aluminium etc.
88. Non mechanized boats used by fishermen
89. Oats
90. Oil Seeds other than those specified in Sec 14 of CST Act 1956
91. Ores and minerals, lime stone, products of lime and dolomite
92. Packing cases, packing materials including cork, cork sheets, gunny bags etc.
93. Palm fatty acid
94. Paper of all sorts, paper board, newsprint and waste paper
95. Paraffin wax of all grade standards other than foods grade standard etc.
96. Perambulators including push chairs for babies, tyres, tubes etc.
97. Petromax lights
98. Pipes, tubes and its fittings of all varieties including hose pipe, ductile pipe etc.
99. Pizza bread
100. Plastic granules, plastic powder, master batches and scraps
101. Plastic raw materials
102. Pollution control equipments as notified by the Government
103. Printed material including diary and calendar other than those specified in the IV Schedule.
104. Printing or drawing ink, whether or not concentrated or solid etc.
105. Processed fruit and vegetables including fruit jam, jelly, pickle etc.
106. Processed meat, poultry and fish
107. Pulp of bamboo, wood, bagasse and paper
108. Pulses and grams other than specified elsewhere in the Schedule
109. Quinine and its products

110. Railway wagons, engines, coaches and parts thereof
111. Raw cashew, cashew nuts, fresh or dried etc.
112. Raw Silk and silk yarn imported from abroad
113. Readymade garments
114. Ready to use flour pastes
115. Renewable energy devices and spare parts
116. River sand and grit, red earth and red gravel
117. Rubber, Raw Rubber, latex, Dry ribbed sheets of RMA grades etc.
118. Sago and starch of all kinds
119. Scraps and wastes namely:
 - a. Aluminum scraps
 - b. Non-ferrous scraps, non-ferrous metal scraps, scraps of copper etc.
 - c. Cloth rags
 - d. Waste of wool (Goat hair and similar fibrous growth on bodies of animals etc.)
 - e. Old brass, copper and stainless steel vessel whether worn out or beaten and
 - f. Waste of paper board
120. Sewing Machines, its parts and accessories
121. Sherbet
122. Ships, boats and other water vessels
123. Silk cotton seeds
124. Silk fabrics
125. Solvent oils other than organic solvent oil
126. Spectacles, parts and components thereof, contact lens and lens cleaner
127. Spices of all varieties and forms including cumin seeds, aniseed etc.
128. i. Sports goods including goods for indoor or outdoor games etc.
 ii. Children's playground equipments
129. Student notebooks and copy books other than specified in IV Sch.
130. Sweets made of fried gram etc.
131. Tamarind seed and powder

- 132. Tanning materials of vegetables origin
 - 133. Tapioca flour
 - 134. Tea
 - 135. Tools
 - 136. Toys excluding electronic toys
 - 137. i. Tractors of all kinds
 - ii. Trailors of tractors of all kinds
 - iii. Power tiller, threshers, combined harvesters and transplanter
 - iv. Attachments and parts of (i), (ii) and (iii)
 - 138. Transformers
 - 139. Transmission wires and towers
 - 140. Umbrellas of all kinds including beach and garden umbrellas
 - 141. Vanaspati (Hydrogenated Vegetable Oil)
 - 142. Vegetable oil and oil cake other than specified in IV Sch.
 - 143. Vegetable Vathal of all kinds sold under a brand name other than under IV Sch.
 - 144. Wet dates
 - 145. Wheat
 - 146. Wheat flour, atta ,maida and rava(sooji)
 - 147. Windmill for water pumping and for generation of electricity
-

RATE OF TAX 12.5 % Part – C of the First Schedule.

The goods, not covered under the rate of tax 1 % and 4 % should be taxed at the rate of tax 12.5%.

23.CHECKPOSTS IN 2008-09

| Sl No. | Name of Checkposts | If in State border, Bordering State | National Highway / State Highway | C.T.District/ Zone |
|--------------------------------------|----------------------------------|-------------------------------------|----------------------------------|-----------------------|
| (1) | (2) | (3) | (4) | (5) |
| CHENNAI ENFORCEMENT WING – I | | | | |
| 1 | Puzhal. (Outgoing) Major Border | Andhra Pradesh | National Highways | Chennai (C) |
| 2 | Pethikuppam (Incoming) Maj-Bor | Andhra Pradesh | National Highways | Chennai (S) |
| CHENNAI ENFORCEMENT WING – II | | | | |
| 1 | Tiruttani - Minor Border | AndhraPradesh | State Highways | Chennai (S) |
| 2 | Uthukkottai - Minor Border | AndhraPradesh | State Highways | Chennai (S) |
| COIMBATORE ENFORCEMENT WING | | | | |
| 1 | K.G.Chavadi (Incoming) Maj-Bor | Kerala | National Highways | Zone I, Coimbatore |
| 2 | K.G.Chavadi (Out-going)Maj-Bor | Kerala | National Highwayx | Zone I, Coimbatore |
| 3 | Pitchanur – Minor Border | Kerala | State Highways | Zone I, Coimbatore |
| 4 | Gudalur – Minor Border | Kerala | State Highways | The Nilgiris |
| 5 | Gopalapuram – Minor Border | Kerala | State Highways | Pollachi |
| 6 | Meenakshipuram – Minor Border | Kerala | State Highways | Pollachi |

(contd.)

Table.23 (contd.)

| (1) | (2) | (3) | (4) | (5) |
|--------------------------------|---|-------------|-------------------|------------|
| SALEM ENFORCEMENT WING | | | | |
| 1 | Hosur (Incoming)- Major-Bor | Karnataka | National Highway | Dharmapuri |
| 2 | Hosur (Out going)- Major -Bor | Karnataka | National Highway | Dharmapuri |
| 3 | Thoppur (Incoming) – Major -Bor | Andra | National Highway | Dharmapuri |
| 4 | Thoppur (Out going)-Major-Bor | Andra | National Highway | Dharmapuri |
| 5 | Bannari – Major Bor | Karnataka | National Highway | Erode |
| TRICHY ENFORCEMENT WING | | | | |
| 1 | Tharangambadi (Minor Border) | Pondicherry | National Highways | Kumbakonam |
| 2 | Melavanjoor (Minor Border) | Pondicherry | National Highways | Kumbakonam |
| 3 | Ranipet (In) - Major Border | Andhra | National Highways | Vellore |
| 4 | Ranipet (Out) - Major Border | Andhra | National Highways | Vellore |
| 5 | Katpadi (Major Border) | Andhra | National Highways | Vellore |
| 6 | Kottakuppam (Minor Border) (Keezputhupattu) | Pondicherry | State Highways | Villupuram |
| 7 | Pattanur (Minor Border) | Pondicherry | State Highways | Villupuram |
| 8 | Pennaiyar Bridge (Minor Border) | Pondicherry | State Highways | Cuddalore |
| 9 | Kandamangalam (Major Border) (now at Lingreddypalayam) | Pondicherry | National Highways | Villupuram |

(contd.)

Table.23 (contd.)

| (1) | (2) | (3) | (4) | (5) |
|-------------------------------------|---------------------------------|--------------|-------------------|---------------|
| MADURAI ENFORCEMENT WING | | | | |
| 1 | Lower Camp (Minor Border) | Kerala | National Highways | Madurai (W) |
| 2 | Bodimettu (Minor Border) | Kerala | State Highways | Madurai (W) |
| TIRUNELVELI ENFORCEMENT WING | | | | |
| 1 | Puliyarai (Major Border) | Kerala | National Highway | Tirunelveli |
| 2 | Kaliyakkavilai (Major Border) | Kerala | National Highway | Nagercoil |
| 3 | Kavalkinaru (Major Border) | Internal C.P | National Highway | Tirunelveli |

24. YEAR WISE PERFORMANCE OF THE ENFORCEMENT WINGS

| FUNCTIONS | 2004-05 | 2005-06 | 2006-07 | 2007-08 | 2008-09 |
|---|---------|---------|---------|---------|---------|
| (1) | (2) | (3) | (4) | (5) | (6) |
| I. Shop Inspection | | | | | |
| Shops Inspected | 7953 | 9313 | 1572 | 7 | 66 |
| Test Purchases made | 1778 | 2829 | - | - | - |
| Extracts verified | 2281 | 1431 | - | - | - |
| II. Offences Compounded | | | | | |
| Shops Inspected | 6844 | 7392 | 1376 | 7 | 32 |
| Test Purchases made | 1715 | 2723 | - | - | - |
| Extract verified | 167 | 7 | - | - | - |
| III. Suppressions detected : (Rs.in crores) | | | | | |
| Turnover Suppressed | 3269.85 | 1330.84 | - | - | - |
| Tax and penalty | 737.37 | 108.95 | - | - | - |
| IV. Compounding fees collected : (Rs.in Lakhs) | | | | | |
| Shops Inspected | 68.36 | 82.98 | 947.45 | 3.52 | 135.57 |
| Test Purchases made | 9.20 | 16.47 | - | - | - |
| Extracts verified | 0.19 | 0.17 | - | - | - |

(contd.)

Table.24 (contd.)

| | (1) | (2) | (3) | (4) | (5) | (6) |
|---|-----|---------|---------|---------|--------|--------|
| V. Cinema house inspection: | | | | | | |
| Cinema houses inspected | | 26383 | 23738 | 8077 | 750 | - |
| Offences detected | | 2543 | 2452 | 806 | - | - |
| Revenue involved (Rs.in lakhs) | | 32.84 | 23.82 | 8.75 | 0.03 | - |
| VI. Check posts in force: | | | | | | |
| Major check posts | | 15 | 15 | 16 | 16 | 16 |
| Minor check posts | | 14 | 14 | 13 | 13 | 13 |
| Rail heads | | 6 | 6 | 10 | 10 | 10 |
| VII. Vehicles checked : (No.in lakhs) | | | | | | |
| At the check posts | | 24.48 | 25.53 | 25.13 | 27.41 | 27.61 |
| Outside the check posts | | 3.61 | 3.33 | 2.07 | 1.13 | 2.03 |
| VIII. Offences booked : | | | | | | |
| At the check posts | | 18696 | 12820 | 11313 | 8083 | 7859 |
| Outside the check posts | | 22126 | 23597 | 12547 | 2509 | 5321 |
| IX. Compounding fees and Advance Tax Collected (Rs.in lakhs) | | | | | | |
| At the check posts | | 4416.97 | 3116.39 | 3181.68 | 586.04 | 316.60 |
| Out side the check posts | | 2509.09 | 2820.13 | 1513.42 | 183.37 | 383.23 |

25.DIVISION WISE ENFORCEMENT WINGWISE PERFORMANCE IN 2008-09

| Functions | Chen nai - I | Chen nai - II | Tri chy | Madu rai | Tiru nelveli | Coim batore | Sal em | TOTAL |
|---|-----------------|---------------------|------------|-------------|-----------------|----------------|-----------|---------|
| (1) | (2) | (3) | (4) | (5) | (6) | (7) | (8) | (9) |
| I. Shop Inspection | | | | | | | | |
| Shops Inspected | 6 | 45 | - | - | - | 15 | 1 | 66 |
| Test Purchases made | - | - | - | - | - | - | - | - |
| Extracts verified | - | - | - | - | - | - | - | - |
| II. Offences Compounded | | | | | | | | |
| Shops Inspected | 1 | 24 | - | - | - | 7 | - | 32 |
| Test Purchases made | - | - | - | - | - | - | - | - |
| Extract verified | - | - | - | - | - | - | - | - |
| III. Suppressions detected : (Rs.in crores) | | | | | | | | |
| Turnover Suppressed | - | | | | | | | |
| Tax and penalty | - | | | | | | | |
| III.(a) Suppressions detected and Revenue Reported in ' D3 ' proposals formulated and sent to the Assessing Officers during 2008 – 09. | | | | | | | | |
| No.of proposals | 26 | 5 | - | - | - | - | - | 31 |
| Tax & penalty (Rs.in crores) | 5332.64 | 49.73 | - | - | - | 78.93 | - | 5461.30 |

(contd.)

Table.25 (contd.)

| (1) | (2) | (3) | (4) | (5) | (6) | (7) | (8) | (9) |
|--|-------|-------|------|------|------|-------|------|--------|
| IV.Compounding fees collected (Rs.in lakhs) | | | | | | | | |
| Shops Inspected | 29.83 | 69.06 | - | - | - | 36.68 | - | 135.57 |
| Test Purchases made | - | - | - | - | - | - | - | - |
| Extracts verified | - | - | - | - | - | - | - | - |
| V.Cinema House Inspection : | | | | | | | | |
| Cinema houses inspected | - | - | - | - | - | - | - | - |
| Offences detected | - | - | - | - | - | - | - | - |
| Revenue involved (Rs.in lakhs) | - | - | - | - | - | - | - | - |
| VI.Check Posts in force: | | | | | | | | |
| Major check posts | 2 | - | 4 | - | 3 | 2 | 5 | 16 |
| Minor check posts | - | 2 | 5 | 2 | - | 4 | - | 13 |
| Rail heads | - | 1 | 5 | 2 | - | - | 2 | 10 |
| VII.Vehicles checked : (No.in Lakhs) | | | | | | | | |
| At the check posts | 3.30 | 0.42 | 2.96 | 0.62 | 2.49 | 8.84 | 8.98 | 27.61 |
| Outside the check posts | 0.42 | 0.45 | 0.13 | 0.13 | 0.04 | 0.65 | 0.21 | 2.03 |

(contd.)

Table.25 (contd.)

| (1) | (2) | (3) | (4) | (5) | (6) | (7) | (8) | (9) |
|---|-------|-------|-------|-------|-------|--------|--------|--------|
| VIII. Offences booked : | | | | | | | | |
| At the check posts | 145 | 85 | 303 | 4060 | 50 | 2841 | 375 | 7859 |
| Outside the check posts | 143 | 227 | 288 | 722 | 224 | 3445 | 272 | 5321 |
| IX. Compounding fees and Advance Tax Collected (Rs.in lakhs) | | | | | | | | |
| At the check posts | 82.24 | 6.46 | 12.48 | 18.52 | 5.35 | 89.99 | 101.56 | 316.60 |
| Outside the check posts | 38.39 | 25.25 | 14.17 | 16.80 | 16.09 | 216.79 | 55.74 | 383.23 |

26. CT REVENUE AND NET STATE DOMESTIC PRODUCT (NSDP)

(Rs. In Crores)

| YEAR | Total Tax Revenue (Rs.In Crores) | Own Tax Revenue of Tamil Nadu | NSDP at Current Prices | Sales Tax Revenue as % of NSDP | Own Tax Revenue as % of NSDP |
|---------|----------------------------------|-------------------------------|------------------------|--------------------------------|------------------------------|
| (1) | (2) | (3) | (4) | (5) | (6) |
| 1999-00 | 7381 | 11107 | 119367 | 6.18 | 9.30 |
| 2000-01 | 8664 | 12575 | 130129 | 6.66 | 9.66 |
| 2001-02 | 8905 | 13358 | 131281 | 6.78 | 10.18 |
| 2002-03 | 10200 | 14787 | 138145 | 7.38 | 10.70 |
| 2003-04 | 11757 | 16534 | 153997 | 7.63 | 10.74 |
| 2004-05 | 13907 | 20167 | 174804 | 7.96 | 11.54 |
| 2005-06 | 16615 | 23774 | 194528 | 8.54 | 12.22 |
| 2006-07 | 19217 | 29106 | 214187 | 8.97 | 13.59 |
| 2007-08 | 19953 | 31561 | 243342 | 8.20 | 12.97 |
| 2008-09 | 22570 | 36092 | 299119 | 7.55 | 12.06 |

05-06: Quick Estimates, 06-07: Advanced Estimates, 07-08: Advanced Estimates Provisional
 Source: Directorate of Economics and Statistics, Chennai-6.

27.STATEWISE SALES TAX AND STATE 'S OWN TAX REVENUE

| (Rs.In Crores) | | | | | | | | | | | |
|---------------------|---------|-------|--------------------|------|--------------------|-------------|-----------------------|--------------------|------------------|------------------------|---|
| State | Year | VAT | Grow th rate | CST | Grow th rate | Oth- ers | Total Sales Tax | Grow th rate | State's O.T.R | Gro w th rate | % of Total Sales Tax to O.T.R |
| (1) | (2) | (3) | (4) | (5) | (6) | (7) | (8) | (9) | (10) | (11) | (12) |
| 1.Tamil Nadu | 2006-07 | 15706 | 14.99 | 2034 | 13.06 | - | 17740 | 14.77 | 29106 | 22.43 | 60.95 |
| | 2007-08 | 16559 | 5.43 | 1744 | -14.26 | 343 | 18646 | 5.11 | 31233 | 7.31 | 59.70 |
| | 2008-09 | 19423 | 17.30 | 1653 | -5.22 | 310 | 21386 | 14.69 | 35949 | 15.10 | 59.30 |
| 2.Andhra Pradesh | 2006-07 | 14182 | 24.39 | 1244 | -4.67 | 41 | 15467 | 21.73 | 23926 | 20.94 | 64.65 |
| | 2007-08 | 18753 | 32.23 | 1791 | 43.97 | 24 | 20568 | 32.98 | 31402 | 31.25 | 65.50 |
| | 2008-09 | 22691 | 21.00 | 2167 | 20.99 | 29 | 24887 | 21.00 | 37866 | 20.58 | 65.72 |

(contd.)

Table.27(contd.)

| (1) | (2) | (3) | (4) | (5) | (6) | (7) | (8) | (9) | (10) | (11) | (12) |
|-------------|---------|-------|-------|------|--------|-----|-------|-------|-------|-------|-------|
| 3.Karnataka | 2006-07 | 10263 | 11.23 | 1499 | -4.34 | - | 11762 | 8.97 | 23301 | 19.46 | 50.48 |
| | 2007-08 | 13433 | 30.89 | 1036 | -30.89 | - | 14469 | 23.01 | 27219 | 16.81 | 53.16 |
| | 2008-09 | 16430 | 22.31 | 731 | -29.44 | - | 17161 | 18.61 | 31876 | 17.11 | 53.84 |
| 4.Kerala | 2006-07 | 8071 | 16.31 | 340 | -0.58 | 152 | 8563 | 17.61 | 11942 | 16.45 | 71.70 |
| | 2007-08 | 9225 | 14.30 | 327 | -3.82 | 160 | 9712 | 13.42 | 13997 | 17.21 | 69.39 |
| | 2008-09 | 10090 | 9.38 | 353 | 7.95 | 173 | 10616 | 9.31 | 15781 | 12.75 | 67.27 |
| 5.Gujarat | 2006-07 | 10288 | 27.1 | 1931 | 1.63 | 598 | 12817 | 28.17 | 18465 | -0.37 | 69.41 |
| | 2007-08 | 12411 | 20.64 | 2477 | 28.28 | 492 | 15380 | 20.00 | 21473 | 16.29 | 71.62 |
| | 2008-09 | 13748 | 10.77 | 2750 | 11.02 | 525 | 17023 | 10.68 | 23650 | 10.14 | 71.98 |

(contd.)

Table.27 (contd.)

| (1) | (2) | (3) | (4) | (5) | (6) | (7) | (8) | (9) | (10) | (11) | (12) |
|-------------------|---------|-------|-------|------|--------|------|-------|-------|-------|-------|-------|
| 6.Maha- rastra | 2006-07 | 21721 | 8.40 | 2548 | -2.00 | -138 | 24131 | 6.60 | 40099 | 6.83 | 60.18 |
| | 2007-08 | 17400 | 19.89 | 2460 | -3.45 | 6752 | 26612 | 10.28 | 46612 | 16.24 | 57.09 |
| | 2008-09 | 20000 | 14.94 | 1996 | -18.86 | 7043 | 29039 | 9.12 | 51893 | 11.33 | 55.96 |
| 7.Punjab | 2006-07 | 4413 | 17.90 | 327 | -56.80 | 89 | 4829 | 7.31 | 9017 | 4.75 | 53.55 |
| | 2007-08 | 5316 | 20.46 | 254 | -22.32 | 208 | 5778 | 19.65 | 10347 | 14.75 | 55.84 |
| | 2008-09 | 5515 | 3.74 | 394 | 55.12 | 381 | 6290 | 8.86 | 11247 | 8.70 | 55.93 |
| 8.West Bengal | 2006-07 | 6263 | 9.32 | 799 | 9.00 | 17 | 7079 | 9.55 | 11695 | 9.35 | 60.53 |
| | 2007-08 | 7343 | 17.24 | 937 | 17.27 | 20 | 8300 | 17.25 | 13774 | 17.78 | 60.26 |
| | 2008-09 | 8665 | 18.00 | 1106 | 18.04 | 23 | 9794 | 18.00 | 16223 | 17.78 | 60.37 |

O.T.R. - Own Tax Revenue

2006-07 – Accounts, 2007-08 – Revised Estimates, 2008-09 Budget Estimates

Source: RBI Bulletin.

28. SALES TAX AND GROSS STATE DOMESTIC PRODUCT (GSDP)
(Rs.In Crores)

| Sl. No | State | Sales Tax | | | GSDP (At Current Prices) | | | % of Sales Tax to GSDP | | |
|--------|--------------------|-----------|-------|-------|-----------------------------|--------|-------|------------------------|-------|-------|
| | | 06-07 | 07-08 | 08-09 | 06-07 | 07-08 | 08-09 | 06-07 | 07-08 | 08-09 |
| (1) | (2) | (3) | (4) | (5) | (6) | (7) | (8) | (9) | (10) | (11) |
| 1 | Andhra Pradesh | 15467 | 20568 | 24887 | 269173 | 312509 | -- | 5.75 | 6.58 | -- |
| 2 | Arunachala Pradesh | 62 | 63 | 76 | 3400 | 4004 | -- | 1.8 | 1.57 | -- |
| 3 | Assam | 2783 | 2727 | 2821 | 65033 | 72700 | -- | 4.28 | 3.75 | -- |
| 4 | Bihar | 2081 | 3107 | 2938 | 98957 | 105148 | -- | 2.10 | 2.96 | -- |
| 5 | Chattisgarh | 2843 | 3200 | 3620 | 64242 | 76588 | -- | 4.43 | 4.18 | -- |
| 6 | Goa | 845 | 920 | 1026 | 14523 | -- | -- | 5.82 | -- | -- |
| 7 | Gujarath | 12817 | 15080 | 17023 | 254533 | -- | -- | 5.04 | -- | -- |
| 8 | Hariyana | 6853 | 8408 | 9785 | 126475 | 147576 | -- | 5.42 | 5.70 | -- |
| 9 | Himacal Pradesh | 914 | 1097 | 1337 | 28358 | 31974 | -- | 3.22 | 3.43 | -- |
| 10 | Jammu & Kashmir | 1211 | 1480 | 1778 | 29030 | 31793 | -- | 4.17 | 4.66 | -- |

Table.28 (contd.)

(Rs.In Crores)

| Sl. No | State | Sales Tax | | | GSDP (At Current Prices) | | | % of Sales Tax to GSDP | | |
|--------|----------------|-----------|-------|-------|-----------------------------|--------|-------|---------------------------|-------|-------|
| | | 06-07 | 07-08 | 08-09 | 06-07 | 07-08 | 08-09 | 06-07 | 07-08 | 08-09 |
| (1) | (2) | (3) | (4) | (5) | (6) | (7) | (8) | (9) | (10) | (11) |
| 11 | Jharkhand | 2458 | 2790 | 4000 | 62676 | 69503 | -- | 3.92 | 4.01 | -- |
| 12 | Karnataka | 11762 | 14469 | 17161 | 188274 | 215282 | -- | 6.25 | 6.72 | -- |
| 13 | Kerala | 8563 | 9712 | 10616 | 132739 | -- | -- | 6.45 | -- | -- |
| 14 | Madhya Pradesh | 5261 | 5700 | 6600 | 128202 | -- | -- | 4.10 | -- | -- |
| 15 | Maharashtra | 24131 | 26612 | 29039 | 509356 | -- | -- | 4.74 | -- | -- |
| 16 | Manipur | 97 | 115 | 129 | 5343 | 5704 | -- | 1.81 | 2.02 | -- |
| 17 | Meghalaya | 216 | 233 | 285 | 6959 | 7605 | -- | 3.10 | 3.07 | -- |
| 18 | Mizoram | 54 | 55 | 60 | 2985 | 6288 | -- | 1.80 | 1.67 | -- |
| 19 | Nagaland | 85 | 99 | 107 | -- | -- | -- | -- | -- | -- |
| 20 | Orissa | 3765 | 4055 | 4400 | 91151 | 103304 | -- | 4.13 | 3.93 | -- |

Table.28 (contd.)

(Rs.In Crores)

| Sl. No | State | Sales Tax | | | GSDP (At Current Prices) | | | % of Sales Tax to GSDP | | |
|--------|----------------|-----------|-------|-------|-----------------------------|--------|-------|---------------------------|-------|-------|
| | | 06-07 | 07-08 | 08-09 | 06-07 | 07-08 | 08-09 | 06-07 | 07-08 | 08-09 |
| 21 | PunJab | 4829 | 5778 | 6290 | 123397 | 137486 | -- | 3.91 | 4.20 | -- |
| 22 | Rajasthan | 6721 | 7600 | 8500 | 148444 | 166629 | -- | 4.53 | 4.56 | -- |
| 23 | Sikkim | 75 | 56 | 56 | 2070 | 2353 | -- | 3.61 | 2.38 | -- |
| 24 | Tamil Nadu | 19217 | 19953 | 21386 | 246266 | 279287 | -- | 7.80 | 7.14 | -- |
| 25 | Tripura | 233 | 266 | 322 | 10282 | -- | -- | 2.27 | -- | -- |
| 26 | Uttarakhand | 1361 | 1688 | 1850 | -- | -- | -- | -- | -- | -- |
| 27 | Utthar Pradesh | 13279 | 16287 | 19705 | 312107 | -- | -- | 4.25 | -- | -- |
| 28 | West Bengal | 7079 | 8300 | 9794 | 272597 | -- | -- | 2.60 | -- | -- |
| 29 | Delhi | 7366 | 8500 | 9800 | 118420 | -- | -- | 6.22 | -- | -- |
| 30 | Pondicherry | 365 | 332 | 410 | 6299 | 6991 | -- | 5.79 | 4.75 | -- |

05-06: Quick Estimates, 06-07: Advanced Estimates, 07-08: Advanced Estimates Provisional

Source : RBI Bulletin.

29. JURISDICTION OF TERRITORIAL WINGS IN 2008-09

Division : CHENNAI (North) No.Of Zones : 3, No.of Assessment Circles : 22(Includes 1 FTAC -III)

| CT Districts / Zones | Zone – I | Zone - II | Zone – III |
|----------------------|----------------|-----------------|-------------------------|
| Assessment Circles | Harbour – I | Loansquare - I | Evening Bazaar |
| | Harbour – II | Loansquare - II | Rattan Bazaar |
| | Harbour – III | Godown Street | Park Town – I |
| | Harbour – IV | Kothawalchavadi | Park Town – II |
| | Harbour – V | Sowcarpet - I | Moore Market (North) |
| | Esplanade – I | Sowcarpet - II | Moore Market (South) |
| | Esplanade – II | Sowcarpet - III | Peddunaickenpet (South) |

Division : CHENNAI (South) No.Of Zones : 3, No.of Assessment Circles : 26 (Includes 1 FTAC -IV)

| CT Districts / Zones | Zone – VII | Zone - X | Kancheepuram |
|----------------------|---------------|-------------|------------------------|
| Assessment Circles | Adayar – I | Ambattur | Chengalpattu |
| | Adayar – II | Ashok Nagar | Kancheepuram (North) |
| | Alandur | Avadi | Kancheepuram (South) |
| | Guindy | Korattur | Maduranthagam |
| | Tambaram – I | Koyambedu | Ponneri |
| | Tambaram – II | Porur | Sriperumbudur |
| | Tiruvanmiyur | Saligramam | Tiruttani |
| | Velachery | Villivakkam | Tiruvallur |
| | Saidapet | | |

(contd.)

Table.29 (contd.)

| Division : CHENNAI (East) No.Of Zones : 3, No.of Assessment Circles : 23 (Includes 1 FTAC- I) | | | |
|---|-----------------|-----------------|-------------------------|
| CT Districts / Zones | Zone – V | Zone - VI | Zone – IX |
| Assessment Circles | Annasalai – I | Royapettah - I | Peddunaickenpet (North) |
| | Annasalai – II | Royapettah - II | Vallalar Nagar |
| | Annasalai – III | Alwarpet | Royapuram |
| | Chintadripet | Ice House | Tondaiarpet |
| | Triplicane – I | Luz | Washermenpet – I |
| | Triplicane – II | Mandaveli | Washermenpet – II |
| | Chepauk | Mylapore | Mannady (East) |
| | | | Mannady (West) |
| Division : CHENNAI (Central) No.Of Zones: 3, No.of Assessment Circles : 22 (Includes 1 FTAC-II) | | | |
| CT Districts / Zones | Zone – IV | Zone - VIII | Zone – XI |
| Assessment Circles | Nungambakkam | Ayyanavaram | Valluvar Kottam |
| | Egmore – I | Amainthakarai | Vadapalani – I |
| | Egmore – II | Kilpauk | Vadapalani – II |
| | Purasawalkam | Manali | T.Nagar (North) |
| | Vepery | Tiruvotriyur | T.Nagar (South) |
| | Periamet | Perambur - I | T.Nagar (East) |
| | Choolai | Perambur - II | Nandhanam |

(contd.)

Table.29 (contd.)

| Division : TIRUCHY | | No.of CT Districts : 5 | | | No.of Assessment Circles : 41 | |
|--------------------|--------------------|------------------------|---------------------|---------------------|-------------------------------|--|
| CT Districts | Tiruchy | Karur | Thanjavur | Kumbakonam | Pudukkottai | |
| Assessment Circles | Gandhi Market | Karur (North) | Thanjavur - I | Kumbakonam - I | Pudukkottai – I | |
| | Rockfort | Karur (South) | Thanjavur - II | Kumbakonam - II | Pudukkottai – II | |
| | Singarathoppu | Karur (West) | Papanasam | Kumbakonam - III | Aranthangi | |
| | Mailamchandai - I | Karur (East) | Mannargudi | Kumbakonam - IV | Pattukottai – I | |
| | Mailamchandai - II | Jayamkondam | Tiruthurai - poondi | Mayiladuthurai - I | Pattukottai – II | |
| | Palakkarai - I | Ariyalur | Tiruvarur | Mayiladuthurai - II | | |
| | Palakkarai - II | Thuraiyur | Nagapattinam | Sirkali | | |
| | Tiruverumbur | Musiri | | Nannilam | | |
| | Srirangam | Kulithalai | | | | |
| | Lalgudi | Manapparai | | | | |
| | Woraiyur | | | | | |

(contd.)

Table.29 (contd.)

| Division : VELLORE | | No.of CT Districts : 4 | | No.of Assessment Circles : 30 | |
|--------------------|---------------------|------------------------|---------------------|-------------------------------|--|
| CT Districts | Vellore | Thiruvannamalai | Cuddalore | Villupuram | |
| Assessment Circles | Vellore (North) | Tiruvannamalai - I | Cuddalore (Town) | Villupuram – I | |
| | Vellore (South) | Tiruvannamalai - II | Cuddalore (Taluk) | Villupuram – II | |
| | Vellore (Rural) | Vaniyambadi | Virudachalam | Tirukoilur | |
| | Ambur | Thirupathur | Chidambaram - I | Tindivanam | |
| | Ranipet | Polur | Chidambaram - II | Gingee | |
| | Ranipet Sipcot | Arani | Panruti (Town) | Kallakurichi | |
| | Gudiyatham (East) | Arcot | Panruti (Rural) | | |
| | Gudiyatham (West) | Vandavasi | | | |
| | Arakkonam | | | | |

(contd.)

Table.29 (contd.)

| Division : MADURAI | | No.of CT Districts : 4 | | No.of Assessment Circles : 38 | |
|--------------------|-----------------------|------------------------|--------------------|-------------------------------|--|
| CT Districts | Madurai (East) | Madurai (West) | Dindigul | Sivagangai | |
| Assessment Circles | West Tower Street | Theni – I | Dindigul – I | Tirupathur | |
| | Kamarajar Salai | Theni – II | Dindigul - II | Karaikudi | |
| | South Avani Moola St. | Periyakulam | Dindigul - III | Devakottai | |
| | Vengalakadai Street | Bodinayakanoor | Dindigul - IV | Sivagangai | |
| | Thallakulam | Uthamapalayam | Dindigul - V | Paramakudi | |
| | Chokkikulam | Thirumangalam | Dindigul (Rural) | Ramanathapuram | |
| | Tamil Sangam Road | West Veli Street | Palani - I | Mudukulathur | |
| | Chitrakara Street | Mahal | Palani - II | | |
| | Nethaji Road | Madurai Rural (South) | Nilakottai | | |
| | Munichalai Road | Thiruparankundram | Kodaikanal | | |
| | Melur | | | | |

(contd.)

Table.29 (contd.)

| Division : TIRUNELVELI | | No.of CT Districts : 5 | | | No.of Assessment Circles : 33 | |
|------------------------|-----------------------|------------------------|-----------------|------------------|-------------------------------|--|
| CT Districts | Tirunelveli | Nagercoil | Tuticorin | Sivakasi | Virudhunagar | |
| Assessment Circles | Tirunelveli (Town) | Nagercoil (Town) | Tuticorin - I | Sivakasi - I | Virudhunagar - I | |
| | Tirunelveli (Jn) | Nagercoil (Rural) | Tuticorin - II | Sivakasi - II | Virudhunagar - II | |
| | Tirunelveli(Bazaar) | Nagercoil (Tower) | Tuticorin - III | Sivakasi - III | Virudhunagar - III | |
| | Palayamkottai | Kulithurai | Kovilpatti - I | Sivakasi - IV | Aruppukkottai | |
| | Ambasamudram | Thuckalay | Kovilpatti - II | Rajapalayam - I | Sathur | |
| | Nanguneri | | Ettayapuram | Rajapalayam - II | | |
| | Tenkasi | | Tiruchendur | Srivilliputhur | | |
| | Shenkottai | | | | | |
| | Sankarankoil | | | | | |

(contd.)

Table.29 (contd.)

Division : COIMBATORE No.of CT Districts : 6 , No.of Assessment Circles : 47 (Includes 2 FTACs)

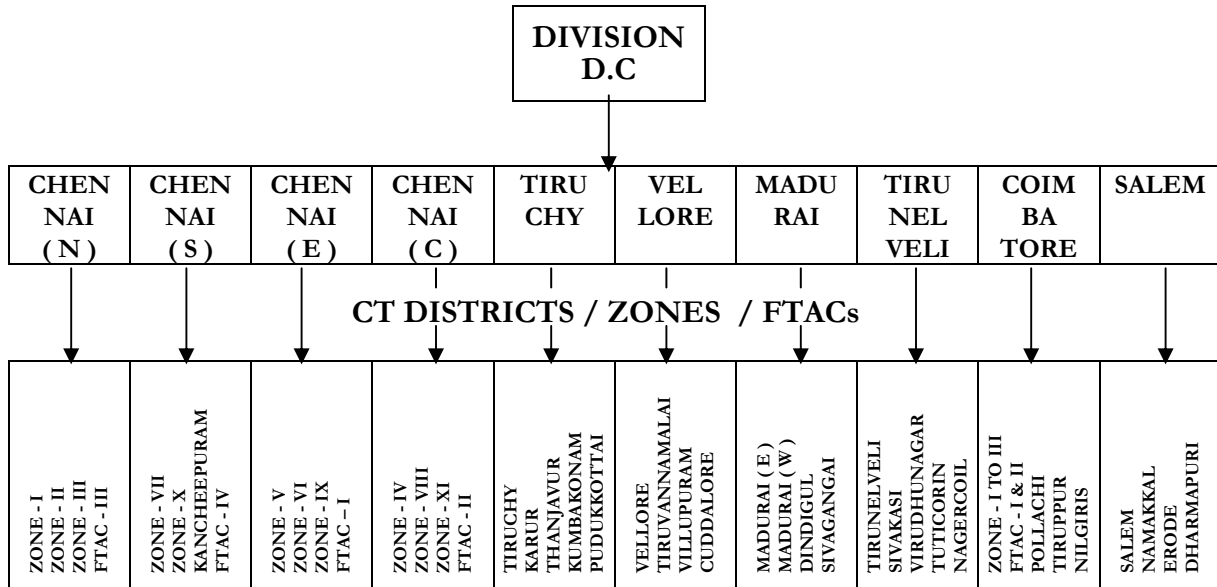
| CT Districts / Zones | Zone - I | Zone - II | Zone - III | Pollachi | Tiruppur | Nilgiri's |
|----------------------|-------------------|--------------------|----------------------|---------------------|---------------------------|-------------------------|
| Assessment Circles | R.G.Street | Ramnagar | Pappanaicken Palayam | Pollachi (East) | Tiruppur (North) | Udagamandalam (South) |
| | Oppanakara Street | R.S.Puram (East) | Dr.Nanjappa Road | Pollachi (West) | Tiruppur (Central - I) | Udagamandalam (North) |
| | N.H.Road | R.S.Puram (West) | Gandhipuram | Pollachi (Rural) | Tiruppur (Central - II) | Kothagiri |
| | B.B.Street | Mettupalayam Road | Ganapathi | Udumalpet (South) | Tiruppur (South) | Gudalur |
| | Avinashi Rd | Saibaba Colony | Avaram - palayam | Udumalpet (North) | Tiruppur (Kongunagar) | Coonoor |
| | Trichy Road | Thudiyalur | Peelamedu (South) | Valparai | Tiruppur-Lakshminagar | |
| | Singanallur | Mettupalayam | Peelamedu (North) | | Tiruppur (Bazaar) | |
| | Pothanur | Velandipalayam | Avinashi | | Tiruppur (Rural) | |
| | Perur | | | | Palladam | |

(contd.)

Table.29 (contd.)

| Division : SALEM | | No.of CT Districts : 4 | | No.of Assessment Circles : 41 | |
|--------------------|----------------------|------------------------|-------------------|-------------------------------|--|
| CT Districts | Salem | Namakkal | Erode | Dharmapuri | |
| Assessment Circles | Salem Town (North) | Namakkal (Town) | Park Road | Dharmapuri | |
| | Salem (South) | Namakkal (Rural) | Brough Road | Krishnagiri | |
| | Salem (West) | Tiruchengode (Town) | Nethaji Road | Harur | |
| | Salem (Bazaar) | Tiruchengode (Rural) | Mettur Road | Hosur (North) | |
| | Salem (Rural) | Athur (Town) | Erode (Rural) | Hosur (South) | |
| | Shevapet (North) | Athur (Rural) | Bhavani | Palacode | |
| | Shevapet (South) | Rasipuram | Perundurai | | |
| | Leigh Bazaar | Sankagiri | Gobichettipalayam | | |
| | Guhai | Omalur | Sathyamangalam | | |
| | Annadhanapatti | | Dharapuram | | |
| | Suramangalam | | Kangeyam | | |
| | Arisipalayam | | Chithode | | |
| | | | Sathy Road | | |
| | | Periya Agraharam | | | |

TERRITORIAL DIVISIONS OF COMMERCIAL TAXES DEPARTMENT



30. JURISDICTION OF ENFORCEMENT WINGS IN 2008-09

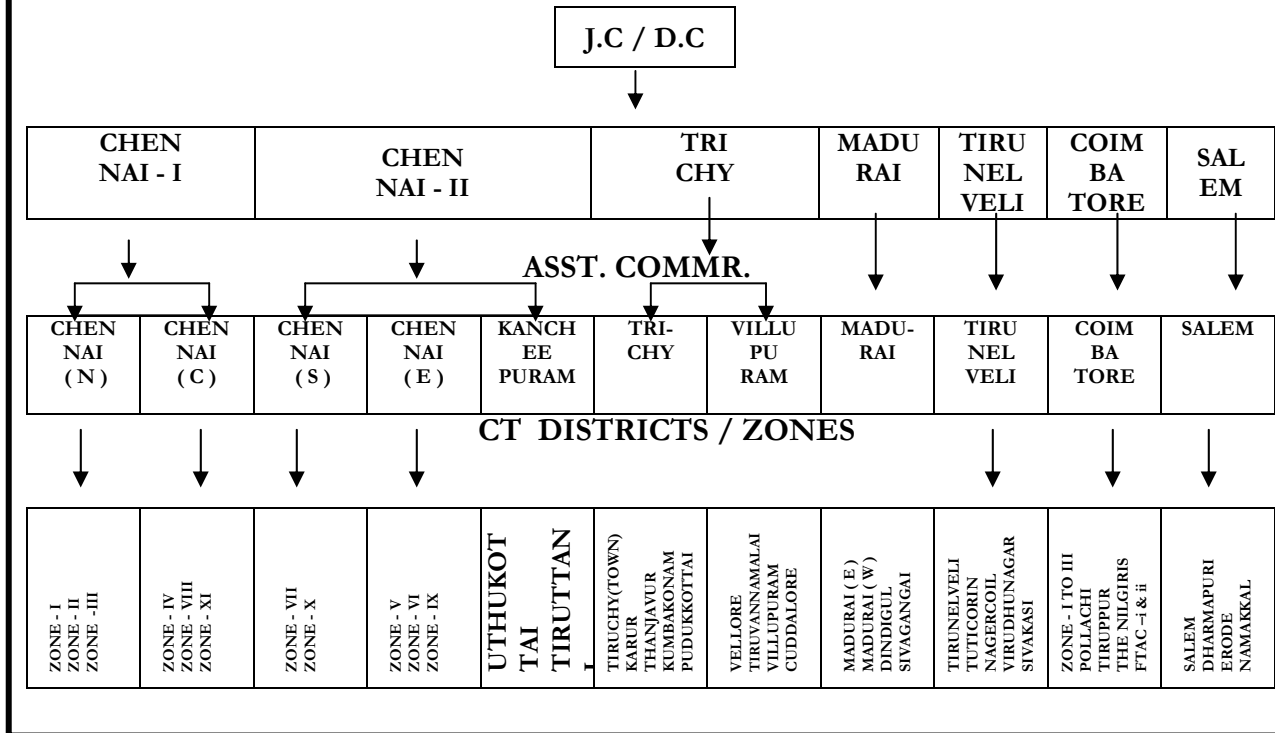
| Joint / Deputy Commissioner (Enft) | Assistant Commissioner (Enforcement) | CT Districts / Zones Covered |
|---|---|---|
| (1) | (2) | (3) |
| Chennai - I | Chennai (North) | Zones I, II, and III |
| | Chennai (Central) | Zones - IV, VIII and XI |
| | CTO (CEW-I) | Entire Jurisdiction of JC (CT) Enft – I |
| Chennai - II | Chennai (South) | Zone - VII and X |
| | Kancheepuram | Uthokottai, Tiruttani |
| | Chennai (East) | Zone - V, VI and IX |
| Coimbatore | Coimbatore | Zone - I, II & III of Coimbatore CT District and Tiruppur, Pollachi the Nilgiris & FTAC – II & I. |
| | Pollachi (CTO) | Pollachi and Tiruppur |
| Trichy | Tiruchy | Tiruchy (Town), Karur, Kumbakonam, Thanjavur and Pudukkottai |
| | Villupuram | Vellore, Tiruvannamalai, Villupuram and Cuddalore |
| | Karur(C.T.O.) | Karur C.T. District |
| | Thanjavur (C.T.O.) | Thanjavur C.T. District |

(contd.)

Table.30 (contd.)

| (1) | (2) | (3) |
|-------------|---|--|
| Trichy | Pudukottai (C.T.O.) | Pudukottai C.T. District |
| | Cuddalore (C.T.O.) | Cuddalore & Villupuram C.T. District |
| | Cuddalore (Checkpost) (C.T.O.) | Cuddalore & Villupuram C.T. District |
| | Vellore (C.T.O.) | Vellore & Tiruvannamalai C.T. District |
| Madurai | Madurai | Madurai (East) and Madurai (west) |
| | Dindigul (C.T.O) | Dindigul |
| | Paramakudi, Karaikudi & Sivagangai (D.C.T.O) | Sivagangai |
| Tirunelveli | Tirunelveli | Tirunelveli, Tuticorin and Nagercoil |
| | Virudhunagar (C.T.O) | Sivakasi and Virudhunagar |
| | Nagercoil (C.T.O.) | Nagercoil |
| | Tuticorin (C.T.O.) | Tuticorin |
| Salem | Salem | Salem |
| | Erode (C.T.O) | Erode/Salem |
| | Namakkal (C.T.O) | Namakkal/Salem |
| | Hosur (CTO - Enft) | Dharmaputi / Salem |

ENFORCEMENT WINGS IN COMMERCIAL TAXES DEPARTMENT



31.JURISDICTION FOR APPEALS IN 2008-09

| Head Quarters | Designation / Constitution | Jurisdiction (Assessment Circles unless otherwise specified) |
|---|--|--|
| (1) | (2) | (3) |
| Kuralagam Annexe Chennai - 600 108 | Appellate Assistant Commissioner (CT) - I, Chennai | Harbour - I to V, Esplanade - I & II, Rattan Bazaar, Park Town - I & II, Moore Market (North & South), Evening Bazaar, Pedunaickenpet (South). |
| - do - | Appellate Assistant Commissioner (CT) -II, Chennai | Sowcarpet - I to III, Godown Street, Kothavalchavadi, Loansquare - I & II, Tondaiarpuram, Washermenpet - I & II, Royapuram, Vallalar Nagar, Mannady East & South, Pedunaickenpet(North), DCTO Group I to III. |
| - do - | Appellate Assistant Commissioner (CT) - III, Chennai | Periyamet, Veppery, Egmore - I & II,Nungambakkam, Choolai, Purasawalkam, Vadapalani - I & II, T.Nagar (North,South&East),Nandhanam and Valluvarkottam. |
| - do - | Appellate Assistant Commissioner (CT) - IV, Chennai | Annasalai - I to III, Chintadripet, Triplicane, Chepauk, Ice House, Alwarpet, Mylapore, Luz, Royapettah and Mandaveli. |
| C.T.Buildings, Collectorate Compound, Kancheepuram - 631 501. | Appellate Assistant Commissioner (CT) - V, at Kancheepuram (with the status quo of two days camp in Chennai for hearing of appeals) | Tambaram - I & II, Guindy, Adyar - I & II, Alandur, Thiruvannamiyur, Velachery, Saidapet, Chengalpattu, Kancheepuram (North), & (South), Madhuranthagam, Ponneri, Sriperumpudur, Tiruttani and Tiruvallur, |

(contd.)

Table.31 (contd.)

| (1) | (2) | (3) |
|---|---|---|
| Kuralagam Annexe Chennai - 600 108 | Appellate Assistant Commissioner (CT) - VI, Chennai | Ayanavaram, Amainthakarai, Kilpauk, Sengundram, Thiruvotriyur, Avadi, Ashoknagar, Porur, Perambur - I&II, Saligramam, Koyambedu, Ambattur, Villivakkam, Korattur and Manali. |
| - do - | Appellate Assistant Commissioner (CT) - VII, Chennai | Back log cases from all Appellate Assistant Commissioners in Chennai city (Commercial Taxes) |
| 4, Fort Round Rd, Vellore, 632 001. | Appellate Assistant Commissioner (CT), Vellore | All Assessment circles in Vellore and Tiruvannamalai C.T.Districts. |
| C.T.Buildings, Sub-Jail Road, Manjakuppam, Cuddalore. Pin Code 607 001. | Appellate Assistant Commissioner (CT), Cuddalore. | All Assessment circles in Cuddalore and Villupuram C.T.Districts, Sirkali, Mayiladuthurai - I & II and Nannilam in Kumbakonam C.T.Districts |
| Collectorate Compound, Contonment, Tiruchirapalli | Appellate Assistant Commissioner (CT), Trichirapalli. | All Assessment circles in Trichy and Karur C.T.Districts. |

(contd.)

Table.31 (contd.)

| (1) | (2) | (3) |
|---|---|--|
| 20 / 3, Sachidananda Moopanar Road, Thanjavur, 613 001. | Appellate Assistant Commissioner (CT), Thanjavur | All Assessment circles in Thanjavur C.T.District, Kumbakonam - I to IV, Thiruvarur, Nagapattinam, Kumbakonam C.T.District, Aranthangi, Pudukottai I & II, Pattukottai - I & II in Pudukottai C.T.Districts. |
| C.T.Buildings, Dr.S.V.K.S. Thangaraj Salai, Madurai-625 020. | Appellate Assistant Commissioner (CT), Madurai (North). | Melakopuram street, Vengalakadai street, Thallakulam, Chokkikulam, Tamil sangam Circle, Nethaji circle, Melur, Dindigul I-V, Palani I & II, Dindigul Rural, Nilakottai, Kodaikanal. |
| C.T.Buildings, Dr.S.V.K.S. Thangaraj Salai, Madurai-625 020. | Appellate Assistant Commissioner (CT), Madurai (South). | Melaveliveedhi, Kamarajar Salai, South Avani Moola street, Chithrakara street, Thirumangalam, Mahal Assessment Circle, Munisalai Road assessment Circle, Theni-I&II, Bodinayakanur, Uthamapalayam, Periyakulam, Thiruparangundram and Madurai (Rural & South) Circle. |
| C.T.Buildings, Madurai Road, Virudhunagar. 626 001. | Appellate Assistant Commissioner (CT), Virudhunagar. | Virudhunagar I to III, Srivilliputhur, Sattur, Aruppukottai, Karaikudi, Thirupathur, Sivagangai, Devakottai, Paramakudi, Ramnad, Mudukulathur, Sivakasi Town I & II, Sivakasi Rural I & II, Rajapalayam I & II |

(contd.)

Table.31 (contd.)

| (1) | (2) | (3) |
|--|---|---|
| C.T.Buildings, Ist Floor, Reserve Line Road, Palayamkottai, Tirunelveli-627002. | Appellate Assistant Commissioner (CT), Tirunelveli | All Assessment circles in Tirunelveli, Kanniyakumari and Tuticorin C.T.Districts. |
| C.T.Buildings, Balasundaram Chettiar Road, Coimbatore. 641 018. | Appellate Assistant Commissioner (CT), (Main) Coimbatore | R.S.Puram (East), R.S.Puram (West), Mettupalayam Road, Ram Nagar, Saibaba colony, Thudiyalur, Mettupalayam, Gandhipuram, Ganapathy, Dr.Nanjappa Road, Pappanaickenpalayam, Avarampalayam, Udagamandalam (South) & (North), Gudalur, Kothagiri and Coonoor. |
| C.T.Buildings, Balasundaram Chettiar Road, Coimbatore. 40, Poongundranar St,Karungalpalaya m Erode. 638 001. | Appellate Assistant Commissioner (CT), (Addl.) Coimbatore | R.G.Street, B.B.Street, Avinashi Road, Pothanur, Perur, Singanallur, N.H.Road, Trichy Road, Oppanakara Street, Peelamedu (North) & (South) and Avinashi. |
| | Appellate Assistant Commissioner (CT), Erode. | Erode (North), (South), (Central), (West), & (Rural) Chithode at Erode, Perundurai, Bhavani, Gopichettipalayam, Sathyamangalam, Dharapuram, Kangeyam, Tiruchengodu (Town) and (Rural) and Sankari Assessment Circles. |

(contd.)

Table.31 (contd.)

| (1) | (2) | (3) |
|--|--|--|
| C.T.Buildings, Palghat Road, Pollachi - 642001. | Appellate Assistant Commissioner (CT), Pollachi. | All Assessment circles in Pollachi & Tiruppur C.T.Districts. |
| C.T.Buildings, Fort Main Road, Anna Salai, Salem - 636 001. | Appellate Assistant Commissioner (CT), Salem. | All Assessment circles in Salem, Namakkal (Except Sankari, Tiruchengode Town and Rural) and Dharmapuri C.T.Districts. |
| Wavoo Complex, 3 rd Floor, 191, N.S.C. Bose Road, Chennai - 1. | Deputy Commissioner (CT), Appeals, Chennai. | Appeals against Assessment from Fast Track Assessment Circles, Chennai. |
| C.T.Buildings, Dr.Balasundaram Chettiar Road, Coimbatore. 641 018. | Deputy Commissioner (CT), Appeals, Coimbatore. | Appeals against Assessment from Fast Track Assessment Circles, Coimbatore. |

(contd.)

Table.31 (contd.)

| (1) | (2) | (3) |
|---|---|--|
| II. SECOND APPEAL TO SALES TAX APPELLATE TRIBUNAL. | | |
| Main Bench, II Floor, City Civil Court Buildings, High Court Compound, Chennai - 600 104. | 1. Chairman - In the cadre of District Judge. | Chennai city, Revenue Districts of Chengalpattu, Thanjavur, Vellore and Cuddalore. |
| | 2. Second Member - An Officer of the Indian Revenue Service (or) in the cadre of Deputy Commr. of Income -Tax (or) a Chartered Accountant having not less than 5 years practical experience and being a Member of the Institute of Chartered Accountant of India. | Appeals against the orders passed by the Appellate Assistant Commissioner (CT) IV, VI Chennai, Kancheepuram, Thanjavur, Vellore and Cuddalore Deputy Commissioner (CT) Appeals, Chennai. |
| | 3. Departmental Member - In the cadre of Joint Commissioner (CT) | Revision of order against the order of DC (CT) Central, North, East and South. |

(contd.)

Table.31 (contd.)

| (1) | (2) | (3) |
|---|---|---|
| <p>Addl. Bench, II Floor, City Civil Court Buildings, High Court Compound, Chennai - 600 104.</p> | <p>1. Addl. Member - In the cadre of Deputy Commissioner (CT)</p> <p>2. Addl. Judicial Member - In the cadre of Sub – Judge.</p> | <p>Appeals against the orders passed by Appellate Assistant Commissioner (CT) I, II, III and VII in Chennai city.</p> |
| <p>Addl. Bench, Madurai, S.K.S. Thangaraj Salai, Madurai - 625 020.</p> | <p>1. Addl. Member - In the cadre of Deputy Commissioner (CT)</p> <p>2. Addl. Judicial Member - In the cadre of Sub – Judge.</p> | <p>Appeals against the orders passed by Appellate Assistant Commissioner (CT) Trichy (Except Appeals relating to Karur CT District), Madurai (N) & (S), Virudhunagar, Tirunelveli.</p> |
| <p>Addl. Bench, Coimbatore, Balasundaram Chettiar Road, Jail Compound, Coimbatore. 641 018.</p> | <p>1. Addl. Member - In the cadre of Deputy Commissioner (CT).</p> <p>2. Addl. Judicial Member - In the cadre of Sub – Judge.</p> | <p>Appeals against the orders passed by the Appellate Assistant Commissioner (CT) Coimbatore (Main) & (Addl) Trichy (Appeals relating to Karur CT District), Pollachi, Salem, Erode and DC (CT) Appeals, Coimbatore.</p> |

32.OFFICERS AND STAFF STRENGTH OF C.T. DEPARTMENT IN 2008-09

| Sl.No | Name of the Post | Scale of Pay (Rs.) | No.of Posts |
|------------------------|---|---------------------|-------------|
| (1) | (2) | (3) | (4) |
| <u>OFFICERS</u> | | | |
| 1. | Commissioner of Commercial Taxes (Above Supertime Scale) | I.A.S. Cadre | 1 |
| 2. | Joint Commissioner (Admn) (Senior Scale) | I.A.S. Cadre | 1 |
| 3. | Joint Commissioner (C.T) | 15000 - 400 - 18600 | 6 |
| 4. | Deputy Commissioner (C.T) (Including 4 cadre posts) | 12000 - 375 - 16500 | 30 |
| 5. | Deputy Commissioner (GS) | 12000 - 375 - 16500 | 1 |
| 6. | Financial Advisor & Chief Accounts Officer | 12000 - 375 - 16500 | 1 |
| 7. | Joint Director of Statistics | 12000 - 375 - 16500 | 1 |
| 8. | Assistant Commissioner (GS) | 10000 - 325 - 15200 | 1 |
| 9. | Assistant Commissioner (CT) | 10000 - 325 - 15200 | 101 |
| 10. | System Analyst | 10000 - 325 - 15200 | 1 |
| 11. | Assistant Director / Statistics Lecturer | 8000 - 275 - 13500 | 1 |
| 12. | Programmer (ADS) | 8000 - 275 - 13500 | 4 |
| 13. | Administrative Officer | 8000 - 275 - 13500 | 6 |
| 14. | Commercial Tax Officer/Public Relation Officer | 8000 - 275 - 13500 | 354 |

(contd.)

Table.32 (contd.)

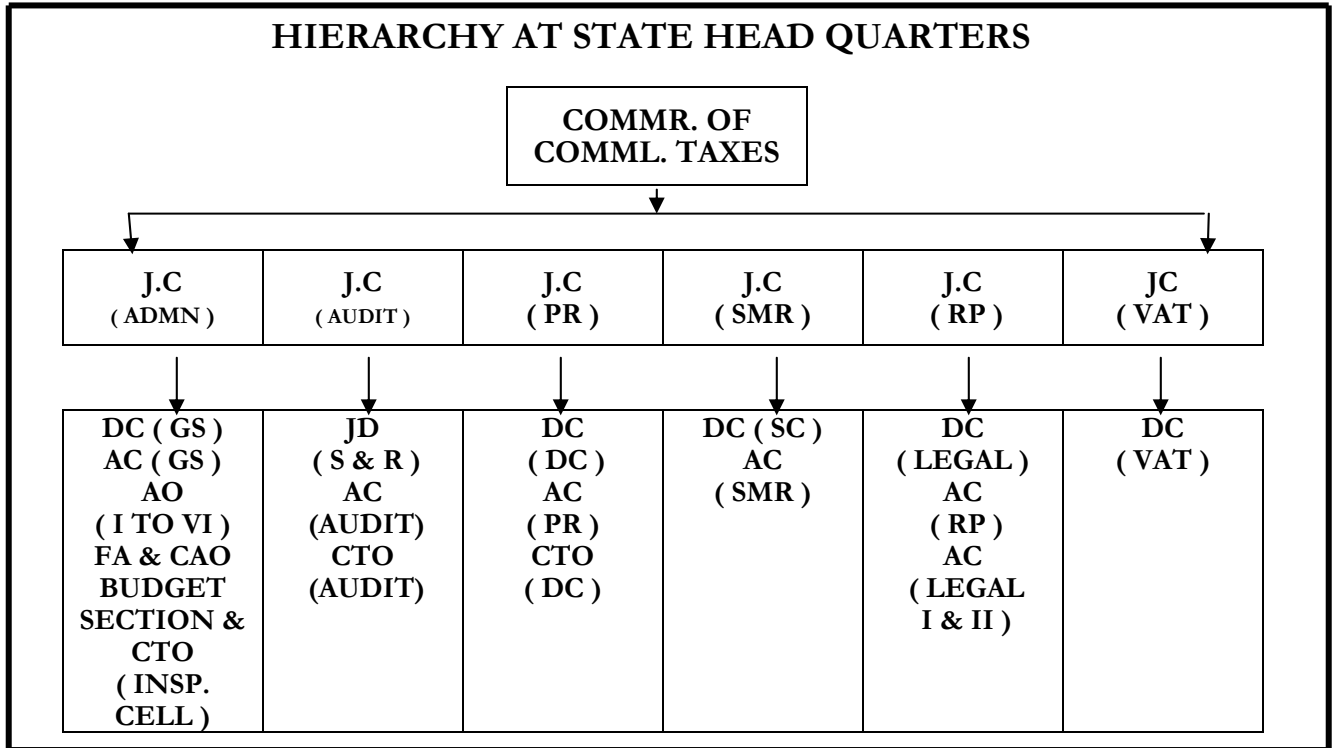
| (1) | (2) | (3) | (4) |
|-----|--|--------------------|------|
| 15. | Deputy Commercial Tax Officer | 6500 - 200 - 10500 | 679 |
| 16. | Deputy Programmer | 6500 - 200 - 10500 | 4 |
| 17. | Statistical Officer | 6500 - 200 - 10500 | 1 |
| 18. | Junior Research Officer | 6500 - 200 - 10500 | 10 |
| 19. | Assistant Commercial Tax Officer | 5500 - 175 - 9000 | 1309 |
| 20. | Statistical Inspector | 5500 - 175 - 9000 | 36 |
| 21. | TNMS /Superintendent | 5700 - 175 - 9000 | 30 |
| 22. | Assistant Programmer | 5500 - 175 - 9000 | 18 |
| 23. | Service Engineer | 5500 - 175 - 9000 | 1 |
| 24. | Stenographer - Grade I | 5300 - 150 - 8300 | 1 |
| 25. | Steno grapher - Grade II | 5000- 150 - 8000 | 7 |
| 26. | Junior Draughtsman | 4500 - 125 - 7000 | 1 |
| 27. | Assistant / Sales Tax Collection Inspector / Gujarathi Assistant / System Assistant | 4000 – 100 - 6000 | 2447 |
| 28. | Stenographer - Grade III | 4000 – 100 - 6000 | 127 |
| 29. | Assistant Statistical Investigator | 4000 – 100 - 6000 | 2 |

(contd.)

Table.32 (contd.)

| (1) | (2) | (3) | (4) |
|--------------|---|------------------------------|--------------|
| 30. | Junior Assistant | 3200 – 85 - 4900 | 1407 |
| 31. | Typist / Junior Assistant cum Typist | 3200 – 85 - 4900 | 652 |
| 32. | Service Assistant | 3050-75-3950-80-4590 | 2 |
| 33. | Driv er | 3200 – 85 - 4900 | 225 |
| 34. | Telephone Operator (Junior Assistant) | 3200 – 85 - 4900 | 1 |
| 35 | Telephone Operator (RC) | 2610-60-3150-65-3540 | 4 |
| 36. | Record Clerk | 2610-60-3150-65-3540 | 675 |
| 37. | Lift Operator | 2610-60-3150-65-3540 | 11 |
| 38. | Office Assistant | 2550 - 55 - 2660 – 60 - 3200 | 2172 |
| 39. | Duffedar | 2550 - 55 - 2660 – 60 - 3200 | 2 |
| 40. | Gardener | 2550 - 55 - 2660 – 60 - 3200 | 1 |
| 41. | Masalchi / Watchman /Watchman cum-Sweeper | 2550 - 55 - 2660 - 60 – 3200 | 89 |
| 42. | Water carrier | 2550 - 55 - 2660 - 60 – 3200 | 1 |
| 43. | Guard | 2550 - 55 - 2660 – 60 – 3200 | 1 |
| TOTAL | | | 10425 |

HIERARCHY AT STATE HEAD QUARTERS



33. OFFICERS OF THE COMMERCIAL TAXES DEPARTMENT IN 2008-09

| Designation | Name of the Officer | Telephone No. | | |
|---|---------------------|---------------|----------------------|----------|
| | | Direct | 28546944 28572652 | 28530550 |
| (1) | (2) | (3) | (4) | (5) |
| <u>HEAD QUARTERS</u> | | | | |
| Commissioner of commercial Taxes | T. Jacob, I.A.S., | 28521744 | 21 | 406 |
| <u>Joint Commissioner Administration (FAC)</u> | | | | |
| Public Relation | S.Murugiah, I.A.S | 28520891 | 22 | 311 |
| Audit | R.Chandrakanthan | 28548097 | 24 | 322 |
| Suo Motu Revision | P.S.Muthuveeru | 28545122 | 28 | 351 |
| Revision Petition | P.Ayyappan | 28544690 | 23 | 277 |
| VAT Cell | M.R.Thangiah | 28415545 | 45 | 268 |
| Chief Executive Officer (TWB) | vacant | 28514251 | - | 312 |
| Deptl. Member, STAT, Chennai | Dr.K.Jeya Athithan | 28441352 | - | - |
| | R.Rajagopal | - | - | - |

(contd.)

Table.33 (contd.)

| (1) | (2) | (3) | (4) | (5) |
|--|-------------------|----------|-----|-----|
| <u>DEPUTY COMMISSIONERS (CT) HEADQUARTERS</u> | | | | |
| Financial Advisor & Chief Accounts Officer | G.Narendrakumar | 28510080 | - | 378 |
| General Service | vacant | 28551864 | 40 | 374 |
| Deputy Director of Statistics | K.Ramakrishnan | - | 31 | 205 |
| Special Cell | K.S.Segar | - | 43 | 228 |
| VAT Cell | A.Sarvar Allam | 28514251 | - | 312 |
| Legal-I | A.Sethuramalingam | 28564920 | 27 | - |
| Legal-II @ Madurai | R.Karunakaran | - | - | - |
| Director,CT Staff Training Institute | Vacant | 28290073 | - | - |
| Computer System | Vacant | 28291082 | - | - |
| State Representative STAT Chennai | R.Rajendran | | | |
| <u>ASSISTANT COMMISSIONERS (CT) : HEAD QUARTERS</u> | | | | |
| Public Relation | J.Raghupathy | - | 33 | - |
| Suo Motu Revision | Vacant | - | 36 | - |
| Legal – Chennai | Vacant | - | 34 | 370 |
| Legal -@ Madurai | Vacant | - | 35 | - |
| Audit Cell | Vacant | - | 37 | 254 |
| Revision Petition | Vacant | - | 38 | - |

(contd.)

Table.33 (contd.)

| (1) | (2) | (3) | (4) | (5) |
|---|-----------------------------------|---------------|-----|----------|
| <u>ADMINISTRATIVE OFFICERS :</u> | | | | |
| General Service - I | P.Raghunandan | - | 30 | - |
| General Service - II | C.Durgabai | - | - | - |
| General Service - III | P.Sagayamari | - | - | - |
| General Service - IV | R. Chandra | - | - | - |
| General Service - V | Vacant | - | - | - |
| General Service - VI | Vacant | - | - | - |
| <u>JOINT COMMISSIONER (CT) TERRITORIAL</u> | | | | |
| Chennai (North) | Sandhya Venugopal Sharma, I.A.S., | 28295551 | | 28294396 |
| <u>DEPUTY COMMISSIONERS (CT) TERRITORIAL</u> | | | | |
| Chennai (South) | S.Jothi Ramalingam | 28292849 | | 28293074 |
| Chennai (East) | B.Gnanasekar | - | | 28293476 |
| Chennai (Central) | M.Mahalingam | 28293847 | | 28293841 |
| Inter State Investigation Cell | R.Vayanaperumal | 28293875 | | - |
| Tiruchy | E.Rathinasamy | 0431-2412047 | | - |
| Vellore | S.Sivakumar | 0416-2225947 | | 2223947 |
| Madurai | Dr.Rajaraman | 0452-25329134 | | 2650134 |
| Tirunelveli | V.Baluchamy | 0462-2561164 | | 2560071 |
| Coimbatore | P.Ekambaram,I.A.S., | 0422-2212849 | | - |
| Salem | G.Subramanian | 0427-2211185 | | 2214932 |

(contd.)

Table.33 (contd.)

| (1) | (2) | (3) | (4) |
|---|--------------------|--------------|---------------|
| <u>DEPUTY COMMISSIONERS (ENFORCEMENT) :</u> | | | |
| Chennai (Enforcement) - I | S.Murugiah,I.A.S., | 28291717 | 28293817 |
| Chennai (Enforcement) - II | Vacant | 28291717 | - |
| Tiruchy Enforcement) | U.Thiagarajan | 0431-2410932 | 2462494 |
| Coimbatore (Enforcement) | Vacant | 0422-2217050 | 2605658 |
| Madurai (Enforcement) | T.Sekar | 0452-2526459 | 0452-2683882 |
| Tirunelveli (Enforcement) | S.Sukumaran | 0462-2560071 | 0462-2330681 |
| Salem (Enforcement) | R.Chandramohan | 0427-2211185 | 2214932 |
| <u>ASSISTANT COMMISSIONER (CT) - TERRITORIAL</u> | | | |
| ZONE - I Chennai (North) | K.Sivakozhudhu | - | 28295695 |
| ZONE - II Chennai (North) | K.Latha | - | 28295153 |
| ZONE - III Chennai (North) | V.Radha | - | 28290349 |
| FTAC - III Chennai (North) | P.Masilamani | - | 28294568 |
| ZONE - VII Chennai (South) | N.Narasimmal | - | 28292778 |
| ZONE - X Chennai (South) | K.Isaivani | - | 28291177 |
| Kancheepuram | K.Kanchana | - | 04112-2237450 |
| FTAC - IV Chennai (South) | K.S.Asraf Ali | - | 28290227 |
| ZONE - V Chennai (East) | P.Narayanan | - | 28293998 |
| ZONE - VI Chennai (East) | S.Natarajan | - | 28291508 |
| ZONE - IX Chennai (East) | S.Razea | - | 28293419 |
| FTAC - I Chennai (East) | Vacant | - | 28294758 |
| ZONE- IV Chennai (Central) | R.K.Medhar Mydeen | - | 28295376 |
| ZONE-VIII Chennai(Central) | S.Kothandaraman | - | 28292536 |

(contd.)

Table.33 (contd.)

| (1) | (2) | (3) | (4) |
|----------------------------------|---------------------|-----|--------------|
| ZONE - XI Chennai (Central) | S.Syed Alimohammed | - | 28294347 |
| FTAC - II Chennai (Central) - I | V.Valarmathi | - | 28293417 |
| FTAC - II Chennai (Central) - II | Vacant | - | 28294866 |
| Tiruchy (Town) | V.Arunachalam | - | 0431-2462569 |
| Karur | K. Kaliamoorthy | - | 04362-235221 |
| Thanjavur | Vacant | - | 04324-274078 |
| Kumbakonam | Vacant | - | 0435-2430518 |
| Pudukkottai | D.Chandrasekaran | - | 04322-221705 |
| Vellore | M.Paulsamy | - | 0416-2220840 |
| Tiruvannamalai | Vacant | - | 04175-223014 |
| Cuddalore | K.Ganesan | - | 04142-231752 |
| Villupuram | R.Arul Dhas | - | 04146-222735 |
| Madurai (East) | Vacant | - | 0452-2629264 |
| Madurai (West) | G.Krishnamoorthy | - | 0452-2529181 |
| Dindigul | Subash Chandra Bose | - | 0451-2424431 |
| Sivagangai | Vacant | - | 04575-240573 |
| Tirunelveli | Vacant | - | 0462-2560295 |
| Nagercoil | K.Desikan | - | 04652-230196 |
| Tuticorin | A. Deivanayagam | - | 0461-2321086 |
| Virudhunagar | Vacant | - | 04562-243778 |
| Sivakasi | D.Vijayamma | - | 04562-224902 |

(contd.)

Table.33 (contd.)

| (1) | (2) | (3) | (4) |
|------------------------------------|-------------------|--------------|---------------|
| Zone - I (Coimbatore) | A. Jeyasingh | - | 0422-2217646 |
| Zone - II (Coimbatore) | C. Palani | - | 0422-2217660 |
| Zone - III (Coimbatore) | K. Munusamy | - | 0422-2215534 |
| FTAC - I (Coimbatore) | C. Sachidhanandam | - | 0422-2214346 |
| FTAC - II (Coimbatore) | D. Sugumaran | - | 0422-2213567 |
| Pollachi | S. Gnanakumar | - | 04259-230985 |
| Tiruppur | M. Marimuthu | - | 0421-2224141 |
| The Nilgiris | Vacant | - | 0423-2443983 |
| Salem | S.M. Saraswathi | - | 0427-2211370 |
| Namakkal | R. Damodharan | - | 04286-220722 |
| Erode | K. Vasantha | - | 0424-2252318 |
| Dharmapuri | S. Kalyanaraman | - | 04342-2230112 |
| Enforcement, Chennai I (North) | Vacant | - | 28293751 |
| Enforcement, Chennai II (South) | R. Thumanivannan | - | 28295603 |
| Enforcement, Chennai II (East) | M.Ravi | - | 28293281 |
| Enforcement, Chennai I (Central) | Vacant | - | 28294076 |
| Enforcement, Trichy | Vacant | - | 0431-2462118 |
| Enforcement, Villupuram | Vacant | - | 04146-223008 |
| Enforcement, Madurai | Vacant | - | 0452-2525320 |
| Enforcement, Tirunelveli | I Anbukumaran | - | 0462-2560624 |
| Enforcement, Coimbatore | P. Arumugam | 0422-2218398 | 0422-2492823 |
| Enforcement, Salem | Vacant | - | 0427-2211170 |

(contd.)

Table.33 (contd.)

| (1) | (2) | (3) | (4) |
|---|-------------------|-----|--------------|
| <u>ADMINISTRATIVE ASSISTANT COMMISSIONERS :</u> | | | |
| Chennai (North) | R. Pachaiyappan | - | 28278396 |
| Chennai (South) | T.Umamaheswari | - | 28276729 |
| Chennai (East) | R.Venkatesan | - | 28229803 |
| Chennai (Central) | P. Veeramuthu | - | 28273841 |
| Tiruchy | R.Dhandapani | - | 0431-2462047 |
| Vellore | Vacant | - | 0416-2223947 |
| Madurai | N.Ramakrishnan | - | 0452-2650134 |
| Tirunelveli | K. Mahalingam | - | 0462-2572064 |
| Coimbatore | G. Gulmohammed | - | 0422-2216303 |
| Salem | G.Samidurai | - | 0427-2210115 |
| <u>COMMERCIAL TAXES STAFF TRAINING INSTITUTE :</u> | | | |
| Senior Lecturer - I | S. Abdul Basheer | - | 28291060 |
| Senior Lecturer - II | T.K.Venkata Raman | - | 28291060 |
| <u>APPELLATE DEPUTY COMMISSIONER :</u> | | | |
| Chennai (Appeals) | N. Somasundram | - | 25366042 |
| Coimbatore (Appeals) | P. Murugaiyan | - | 0422-2210852 |
| <u>APPELLATE ASSISTANT COMMISSIONER :</u> | | | |
| Chennai - I | Vacant | - | 25341212 |
| Chennai - II | K.Gunasekaran | - | 25340389 |

(cond.)

Table.33 (contd.)

| (1) | (2) | (3) | (4) |
|---------------------------|------------------|-----|---------------|
| Chennai - III | M. Parameswaran | - | 25340944 |
| Chennai - IV | P. Devanathan | - | 25342715 |
| Kancheepuram (V) | Vacant | - | 044-27239601 |
| Chennai - VI | S.Gopinathan | - | 25341212 |
| Chennai - VII | Vacant | - | 25340944 |
| Tiruchy | M. Mohan | - | 0431-2465530 |
| Thanjavur | S. Peer Mohammed | - | 04362-236824 |
| Vellore | Vacant | - | 0416-2222023 |
| Cuddalore | S.P. Asokan | - | 04142-2321751 |
| Madurai (North) | R.Devendrapathi | - | 0452-2526465 |
| Madurai (South) | V. Manicakam | - | 0452-2527399 |
| Tirunelveli | P.S. | - | 0462-2560625 |
| Virudhunagar | K. Abdul Razak | - | 04562-243272 |
| Coimbatore (Main) | K.Sundaram | - | 0422-2560625 |
| Coimbatore (Additional) | S.Thangavelu | - | 0422-2216306 |
| Pollachi | Vacant | - | 04529-224405 |
| Salem | K. Sivaraman | - | 0427-2211470 |
| Erode | M. Mani | - | 0424-2212882 |

(contd.)

Table.33 (contd.)

| (1) | (2) | (3) | (4) |
|--|------------------|-----|--------------|
| <u>SALES TAX APPELLATE TRIBUNAL :</u> | | | |
| <u>Additional Bench, Chennai</u> | | | |
| Secretary | R.Rajapal | | |
| Additional Departmental Member | N.Elangovan | | |
| Additional Judicial Member | - | | |
| <u>Additional Bench, Madurai</u> | | | |
| Secretary | S. Murugan | | |
| Additional Departmental Member | - | - | 0452-2650890 |
| Additional Judicial Member | - | - | 0452-2650195 |
| Additional Judicial Member | - | - | 0452-2650195 |
| <u>Additional Bench, Coimbatore.</u> | | | |
| Secretary | K.Palanisamy | - | 0422-2213571 |
| Additional Departmental Member | R. Radhakrishnan | - | 0422-2213571 |
| Additional Judicial Member | -- | - | 0422-2213571 |
| TAMILNADU TAXATION SPECIAL TRIBUNAL | | | |
| Chairman | - | | |
| Departmental Member | | | |
| Second Member | - | | |
| Secretary | R.Rajagopal | | |
| Additional Department Member | - | | |
| Additional Judicial Member | - | | |
| Special Officer-Sales Tax Deputation (TNCSC) | - | | |

Commercial Taxes Department Website: www.tnsalestax.com.

34. COMMERCIAL TAXES DEPARTMENT IN 2008-09 -e-mail Addresses

| Designation | e-mail Address |
|----------------------------------|--|
| COMMISSIONER OF COMMERCIAL TAXES | commissioner@ctdtn.gov |
| ADDL.COMMR(Admn) | Addlcommr_admn@ctdtn.gov |
| JC(ADMIN) | jc_admin@ctdtn.gov |
| ADDL.COMMR (AUDIT) | jc_audit@ctdtn.gov |
| ADDL.COMMR (PR) | jc_pr@ctdtn.gov |
| ADDL.COMMR (RP) | jc_rp@ctdtn.gov |
| ADDL.COMMR (SMR) | jc_smr@ctdtn.gov |
| ADDL.COMMR (VAT) | jc_vat@ctdtn.gov |
| JC (COMPUTER SYSTEM) | dcsystem@ctdtn.gov |
| JC (AUDIT) | dc_drafting@ctdtn.gov |
| JC (LEGAL) | dc_legal@ctdtn.gov |
| JC (LEGAL)(MADURAI) | dclegal_mdu@ctdtn.gov |
| JC (SMR) | dc_smr@ctdtn.gov |
| JC SPECIAL | dc_special@ctdtn.gov |
| JC VAT | dc_vat@ctdtn.gov |
| DRAFTING CELL | drafting_cell@ctdtn.gov |
| FA & CAO | fa_cao@ctdtn.gov |
| JD (STATISTICS) | jd_stat@ctdtn.gov |
| DC GENERAL SERVICES | acgs@ctdtn.gov |
| ACT CELL | act_cell@ctdtn.gov |
| AUDIT CELL | audit_cell@ctdtn.gov |

Table.34 (contd.)

| Designation | e-mail Address |
|------------------------------|--------------------------|
| DC(AUDIT) | ac_audit@ctdtn.gov |
| DC(PR) | ac_pr @ctdtn.gov |
| DC(RP) | ac_rp@ctdtn.gov |
| DC(LEGAL-1) | ac_legal1@ctdtn.gov |
| DC(LEGAL-2) | ac_legal2@ctdtn.gov |
| DC(SMR) | ac_smr@ctdtn.gov |
| Administrative Officer – I | ao_I@ctdtn.gov |
| Administrative Officer – II | ao_II@ctdtn.gov |
| Administrative Officer – III | ao_III@ctdtn.gov |
| Administrative Officer – IV | ao_IV@ctdtn.gov |
| All Group Id: | |
| APPELLATEDR | appellatedr@ctdtn.gov |
| DCENFORCEMENT | acebfiorcement@ctdtn.gov |
| JCENFORCEMENT | dcenforcement@ctdtn.gov |
| GROUPS | groups@ctdtn.gov |
| CHECKPOSTS | checkposts@ctdtn.gov |
| DC TERRITORIAL | acterritorial@ctdtn.gov |
| JC TERRITORIAL | dcterritorial@ctdtn.gov |
| DC Chepauk | AC_chepauk@ctdtn.gov |
| AO | AO@ctdtn.gov |
| AC TERRITORIAL | cto@ctdtn.gov |
| AP'S | ap@ctdtn.gov |

| Table.34 (contd.) | |
|---------------------------|------------------------------|
| Designation | e-mail Address |
| DP'S | dp's@ctdtn.gov |
| PROGM'S | Propg's@ctdtn.gov |
| CTSECRETARY | ctsecretary@ctdtn.gov |
| DC | ac@ctdtn.gov |
| JC | dc@ctdtn.gov |
| Addl. Commr. | jc@ctdtn.gov |
| COMTAXDEPTTN | comtaxdepttn@ctdtn.gov |
| SYSTEM ASSISTANTS_TRICHYS | SystemAssts@ctdtn.gov |
| APPELLATE | |
| DR @ DC (APPEALS) CHENNAI | dr_dc_che@ctdtn.gov |
| DR @AAC COIMBATORE (MAIN) | dr_aac_cbem@ctdtn.gov |
| DR @AAC COIMBATORE(ADDL) | dr_aac_cbea@ctdtn.gov |
| DR @AAC CUDDALORE | dr_aac_cdl@ctdtn.gov |
| DR @AAC ERODE | dr_aac_erd@ctdtn.gov |
| DR @AAC I CHENNAI | dr_aac1@ctdtn.gov |
| DR @AAC II CHENNAI | dr_aac2@ctdtn.gov |
| DR @AAC III CHENNAI | dr_aac3@ctdtn.gov |
| DR @AAC IV CHENNAI | Dr_aac4@ctdtn.gov |
| DR @AAC MADURAI (NORTH) | <u>dr_aac_mdun@ctdtn.gov</u> |
| DR @AAC MADURAI (SOUTH) | dr_aac_mdus@ctdtn.gov |
| DR @AAC POLLACHI | dr_aac_pol@ctdtn.gov |

| Table.34 (contd.) | |
|-------------------------------------|---------------------------------|
| Designation | e-mail Address |
| DR @AAC SALEM | dr_aac_slm@ctdtn.gov |
| DR @AAC THANJAVUR | dr_aac_tnj@ctdtn.gov |
| DR @AAC TIRUNELVELI | dr_aac_tnl@ctdtn.gov |
| DR @AAC TRICHY | dr_aac_try@ctdtn.gov |
| DR @AAC V CHENNAI | dr_aac5@ctdtn.gov |
| DR @AAC VELLORE | dr_aac_vlr@ctdtn.gov |
| DR @AAC VI CHENNAI | dr_aac6.tnct@ctdtn.gov |
| DR @AAC VII CHENNAI | dr_aac7.tnct@ctdtn.gov |
| DR @AAC VIRUDHUNAGAR | dr_aac_vrn@ctdtn.gov |
| DR @DC (APPEALS) COIMBATORE | dr_dc_cbe@ctdtn.gov |
| SGP TAXES | sgp_taxes@ctdtn.gov |
| ADDL.S.R.STAT(AB),CHENNAI | asr_che@ctdtn.gov |
| ADDL.S.R.STAT(AB),COIMBATORE | asr_cbe@ctdtn.gov |
| ADDL.S.R.STAT(AB),MADURAI | asr_mdu@ctdtn.gov |
| S.R. CHENNAI | sr_stat@ctdtn.gov |
| ENFORCEMENT | |
| DEPUTY COMMISSIONERS | |
| JC (E) CHENNAI II | edc_chennai2@ctdtn.gov |
| JC (E) COIMBATORE | edc_coimbatore@ctdtn.gov |
| JC (E) MADURAI | edc_madurai@ctdtn.gov |
| JC (E) SALEM | edc_salem@ctdtn.gov |

| Table.34 (contd.) | |
|------------------------|---------------------------|
| Designation | e-mail Address |
| JC (E) TIRUNELVELI | edc_tirunelveli@ctdtn.gov |
| JC (E) TRICHY | edc_trichy@ctdtn.gov |
| JC ISIC | edc_isic@ctdtn.gov |
| JC(E) CHENNAI | ejc_chennai1@ctdtn.gov |
| DC (E) CHENNAI CENTRAL | eac_checentral@ctdtn.gov |
| DC (E) CHENNAI EAST | eac_cheeast@ctdtn.gov |
| DC (E) CHENNAI NORTH | eac_chenorth@ctdtn.gov |
| DC (E) CHENNAI SOUTH | eac_chesouth@ctdtn.gov |
| DC (E) COIMBATORE | eac_coimbatore@ctdtn.gov |
| DC (E) MADURAI | eac_madurai@ctdtn.gov |
| DC (E) SALEM | eac_salem@ctdtn.gov |
| DC (E) TIRUNELVELI | eac_tirunelveli@ctdtn.gov |
| DC (E) TRICHY | eac_trichy@ctdtn.gov |
| DC (E) VILLUPURAM | eac_villupuram@ctdtn.gov |
| DC (E) CUDDALORE | eac_cuddalore@ctdtn.gov |
| DC (E) DINDIGUL | eac_dindigul@ctdtn.gov |
| DC (E) ERODE | eac_erode@ctdtn.gov |
| DC (E) HOSUR | eac_hosur@ctdtn.gov |
| DC (E) ISIC | eac_isic@ctdtn.gov |
| DC (E) KARUR | eac_kumbakonam@ctdtn.gov |
| DC (E) KUMBAKONAM | eac_karur@ctdtn.gov |

| Table.34 (contd.) | |
|------------------------------|-----------------------------------|
| Designation | e-mail Address |
| DC (E) NAGERCOIL | eac_nagercoil@ctdtn.gov |
| DC (E) NAMAKKAL | eac_namakkal@ctdtn.gov |
| DC (E) POLLACHI | eac_pollachi@ctdtn.gov |
| DC (E) THANJAVUR | eac_thanjavur@ctdtn.gov |
| DC (E) TUTICORIN | eac_tuticorin@ctdtn.gov |
| DC (E) VELLORE | eac_vellore@ctdtn.gov |
| DC (E) VIRUDHUNAGAR | eac_virudunagar@ctdtn.gov |
| GROUP | |
| GROUP CHENNAI CENTRAL | group_checentral@ctdtn.gov |
| GROUP CHENNAI EAST | group_cheieast@ctdtn.gov |
| GROUP CHENNAI I | group_chennai1@ctdtn.gov |
| GROUP CHENNAI II | group_chennai2@ctdtn.gov |
| GROUP CHENNAI NORTH | group_chenorth@ctdtn.gov |
| GROUP CHENNAI SOUTH | group_chesouth@ctdtn.gov |
| GROUP COIMBATORE | group_coimbatore@ctdtn.gov |
| GROUP CUDDALORE | group_cuddalore@ctdtn.gov |
| GROUP DINDIGUL | group_dindigul@ctdtn.gov |
| GROUP ERODE | group_erode@ctdtn.gov |
| GROUP HOSUR | group_hosur@ctdtn.gov |
| GROUP ISIC | group_isic@ctdtn.gov |
| GROUP KARUR | group_karur@ctdtn.gov |

| Table.34 (contd.) | |
|---------------------------|------------------------------------|
| Designation | e-mail Address |
| GROUP KUMBAKONAM | group_kumbakonam@ctdtn.gov |
| GROUP MADURAI | group_madurai@ctdtn.gov |
| GROUP NAGERCOIL | group_nagercoil@ctdtn.gov |
| GROUP NAMAKKAL | group_namakkal@ctdtn.gov |
| GROUP POLLACHI | group_pollachi@ctdtn.gov |
| GROUP SALEM | group_salem@ctdtn.gov |
| GROUP THANJAVUR | group_thanjavur@ctdtn.gov |
| GROUP TIRUNELVELI | group_tirunelveli@ctdtn.gov |
| GROUP TRICHY | group_trichy@ctdtn.gov |
| GROUP TUTICORIN | group_tuticorin@ctdtn.gov |
| GROUP VELLORE | group_vellore@ctdtn.gov |
| GROUP VILLUPURAM | group_villupuram@ctdtn.gov |
| GROUP VIRUDHUNAGAR | group_virudhungr@ctdtn.gov |
| CHECKPOSTS | |
| BANNARI | bannari@ctdtn.gov |
| BODIMEDU | bodi@ctdtn.gov |
| GOPALAPURAM | gopalapuram@ctdtn.gov |
| GUDALUR | gudalur@ctdtn.gov |
| HOSUR IN | hosur_in@ctdtn.gov |
| HOSUR OUT | hosur_out@ctdtn.gov |
| KALIAKKAVILAI | kaliakkavilai@ctdtn.gov |

Table.34 (contd.)

| Designation | e-mail Address |
|------------------|--------------------------|
| KANDAMANGALAM | kandamangalam@ctdtn.gov |
| KATPADI | katpadi@ctdtn.gov |
| KAVALKINARU | kavalkinaru@ctdtn.gov |
| KG CHAVADI IN | kgchavadi_in@ctdtn.gov |
| KG CHAVADI OUT | kgchavadi_out@ctdtn.gov |
| KOTTAKUPPAM | kottakuppam@ctdtn.gov |
| LOWER CAMP | lower_camp@ctdtn.gov |
| MEENAKSHIPURAM | meenakshipuram@ctdtn.gov |
| MELAVANJOOR | melavanjoor@ctdtn.gov |
| PATTANUR | pattanur@ctdtn.gov |
| PENNAIYAR BRIDGE | pennaiyar@ctdtn.gov |
| PICHANUR | pichanur@ctdtn.gov |
| PULIYARAI | puliyarai@ctdtn.gov |
| PUZHAI IN | puzhai_in@ctdtn.gov |
| PUZHAI OUT | puzhai_out@ctdtn.gov |
| RANIPET-IN | ranipet_in@ctdtn.gov |
| RANIPET-OUT | ranipet_out@ctdtn.gov |
| THARANGAMPADI | tharangampadi@ctdtn.gov |
| THOPPUR-IN | thoppur_in@ctdtn.gov |
| THOPPUR-OUT | thoppur_out@ctdtn.gov |
| TIRUTHANI | tiruthani@ctdtn.gov |
| UTHUKOTTAI | uthukottai@ctdtn.gov |

| Table.34 (contd.) | |
|-----------------------------|------------------------------|
| Designation | e-mail Address |
| TERRITORIAL | |
| JC(T)(CENTRAL) | tdc_chennaicentral@ctdtn.gov |
| JC(T)(EAST) | tdc_chennaieast@ctdtn.gov |
| JC(T)(NORTH) | tdc_chennainorth@ctdtn.gov |
| JC(T)(SOUTH) | tdc_chennaisouth@ctdtn.gov |
| JC(T)(COIMBATORE) | tdc_coimbatore@ctdtn.gov |
| JC(T)(MDURAI) | tdc_madurai@ctdtn.gov |
| JC(T)(SALEM) | tdc_salem@ctdtn.gov |
| JC(T)(TIRUNELVEI) | tdc_tirunelveli@ctdtn.gov |
| JC(T)(TRICHY) | tdc_trichy@ctdtn.gov |
| JC(T)(VELLORE) | tdc_vellore@ctdtn.gov |
| DEPUTY COMMISSIONERS | |
| DC(T)CAC-I(CENTRAL) | tac_cac1chennai@ctdtn.gov |
| DC(T)CAC-I COIMBATORE | tac_cac1coimbatore@ctdtn.gov |
| DC(T)CAC-II CHENNAI | tac_cac2chennai@ctdtn.gov |
| DC(T)CAC-II COIMBATORE | tac_cac2coimbatore@ctdtn.gov |
| DC(T)CAC-III CHENNAI | tac_cac3chennai@ctdtn.gov |
| DC(T)CAC-IV CHENNAI | tac_cac4chennai@ctdtn.gov |
| DC(T)CHENGLEPUT | tac_chengleput@ctdtn.gov |
| DC(T)COIMBATORE I | tac_coimbatore1@ctdtn.gov |
| DC(T)COIMBATORE II | tac_coimbatore2@ctdtn.gov |

| Table.34 (contd.) | |
|------------------------|---------------------------|
| Designation | e-mail Address |
| DC(T)COIMBATORE III | tac_coimbatore3@ctdtn.gov |
| DC(T)CUDDALORE | tac_cuddalore@ctdtn.gov |
| DC(T)DHARMAPURI | tac_dharmapuri@ctdtn.gov |
| DC(T)DINDIGUL | tac_dindigul@ctdtn.gov |
| DC(T)ERODE | tac_erode@ctdtn.gov |
| DC(T)KARUR | tac_karur@ctdtn.gov |
| DC(T)KUMBAKONAM | tac_kumbakonam@ctdtn.gov |
| DC(T)MADURAI EAST | tac_maduraieast@ctdtn.gov |
| DC(T)MADURAI WEST | tac_maduraiwest@ctdtn.gov |
| DC(T)NAGERCOIL | tac_nagercoil@ctdtn.gov |
| DC (T) NAMAKKAL | tac_namakkal@ctdtn.gov |
| DC (T) POLLACHI | tac_pollachi@ctdtn.gov |
| DC (T) PUDUKOTTAI | tac_pudukottai@ctdtn.gov |
| DC (T) SALEM | tac_salem@ctdtn.gov |
| DC (T) SIVAGANGAI | tac_sivagangai@ctdtn.gov |
| DC (T) SIVAKASI | tac_sivakasi@ctdtn.gov |
| DC (T) THANJAVUR | tac_thanjavur@ctdtn.gov |
| DC (T) THIRUVANNAMALAI | tac_tvmalai@ctdtn.gov |
| DC (T) TIRUNELVELI | tac_tirunelveli@ctdtn.gov |
| DC (T) TIRUPPUR | tac_tiruppur@ctdtn.gov |
| DC (T) TRICHY | tac_trichy@ctdtn.gov |
| DC (T) TUTICORIN | tac_tuticorin@ctdtn.gov |

| Table.34 (contd.) | |
|---------------------------------|---------------------------------|
| Designation | e-mail Address |
| DC (T) UTHAGAMANDALAM | tac_ooty@ctdtn.gov |
| DC (T) VELLORE | tac_vellore@ctdtn.gov |
| DC (T) VILLUPURAM | tac_villupuram@ctdtn.gov |
| DC (T) VIRUDHUNAGAR | tac_virudhungr@ctdtn.gov |
| DC (T) CHENNAI ZONE I | tac_zone1@ctdtn.gov |
| DC (T) CHENNAI ZONE II | tac_zone2@ctdtn.gov |
| DC (T) CHENNAI ZONE III | tac_zone3@ctdtn.gov |
| DC (T) CHENNAI ZONE IV | tac_zone4@ctdtn.gov |
| DC (T) CHENNAI ZONE V | tac_zone5@ctdtn.gov |
| DC (T) CHENNAI ZONE VI | tac_zone6@ctdtn.gov |
| DC (T) CHENNAI ZONE VII | tac_zone7@ctdtn.gov |
| DC (T) CHENNAI ZONE VIII | tac_zone8@ctdtn.gov |
| DC (T) CHENNAI ZONE X | tac_zone10@ctdtn.gov |
| DC (T) CHENNAI ZONE XI | tac_zone11@ctdtn.gov |
| ASSESSMENT CIRCLES | |
| ADYAR I | adyar1@ctdtn.gov |
| ADYAR II | adyar2@ctdtn.gov |
| ALANDUR | alandur@ctdtn.gov |
| ALWARPET | alwarpet@ctdtn.gov |
| AMBATTUR | ambattur@ctdtn.gov |
| AMBUR | ambur@ctdtn.gov |
| AMINJIKARAI | aminjikai@ctdtn.gov |

| Table.34 (contd.) | |
|-------------------|--------------------------|
| Designation | e-mail Address |
| ANNASALAI I | annasalai1@ctdtn.gov |
| ANNASALAI II | annasalai2@ctdtn.gov |
| ANNASALAI III | annasalai3@ctdtn.gov |
| ANNATHANAPATTY | annathanapatty@ctdtn.gov |
| ARAKKONAM | arakkonam@ctdtn.gov |
| ARANTHANGI | aranthangi@ctdtn.gov |
| ARNI | arni@ctdtn.gov |
| ARUPPUKOTTAI | aruppucottai@ctdtn.gov |
| ASHOK NAGAR | ashoknagar@ctdtn.gov |
| ATTUR RURAL | atturrural@ctdtn.gov |
| ATTUR TOWN | atturtown.tnct@nic.in |
| AVADI | avadi.tnct@nic.in |
| AVANASHI | avanashi@ctdtn.gov |
| AYANAVARAM | ayanavaram@ctdtn.gov |
| BAZAAR STREET | bazaarstreet@ctdtn.gov |
| BODINAYAKANUR | bodinayakanur@ctdtn.gov |
| CHENGALPATTU | chengalpattu@ctdtn.gov |
| CHEPAUK | chepauk@ctdtn.gov |
| CHIDAMBARAM I | chidambaram1@ctdtn.gov |
| CHIDAMBARAM II | chidambaram2@ctdtn.gov |
| DEVAKOTTAI | devakottai@ctdtn.gov |
| DINDIGUL I | dindigul1@ctdtn.gov |

| Table.34 (contd.) | |
|---------------------|--------------------------|
| Designation | e-mail Address |
| DINDIGUL II | dindigul2@ctdtn.gov |
| DINDIGUL III | dindigul3@ctdtn.gov |
| DINDIGUL IV | dindigul4@ctdtn.gov |
| DINDIGUL RURAL | dindigulrural@ctdtn.gov |
| DINDIGUL V | dindigul5@ctdtn.gov |
| DR NANJAPPA ROAD | drnanjapparoad@ctdtn.gov |
| EGMORE I | egmore1@ctdtn.gov |
| EGMORE II | egmore2@ctdtn.gov |
| ETTAYAPURAM | ettayapuram@ctdtn.gov |
| FTAC - II - CHENNAI | fac2chennai@ctdtn.gov |
| FTAC - IV - CHENNAI | fac4chennai@ctdtn.gov |
| GANAPATHY | ganapathy@ctdtn.gov |
| GANDHI MARKET | gandhimarket@ctdtn.gov |
| GINGEE | gingee@ctdtn.gov |
| GUDIYATHAM EAST | gudiyathameast@ctdtn.gov |
| GUDIYATHAM WEST | gudiyathamwest@ctdtn.gov |
| GUINDY | guindy@ctdtn.gov |
| HARUR | harur@ctdtn.gov |
| HOSUR NORTH | hosurnorth@ctdtn.gov |
| HOSUR SOUTH | hosursouth@ctdtn.gov |
| ICE HOUSE | icehouse@ctdtn.gov |
| JAYAMKONDAM | jayamkondam@ctdtn.gov |

| Table.34 (contd.) | |
|----------------------------|-------------------------------|
| Designation | e-mail Address |
| KALLAKURICHI | kallakurichi@ctdtn.gov |
| KANCHEEPURAM NORTH | kancheepuram@ctdtn.gov |
| KANCHEEPURAM SOUTH | kancheepuram@ctdtn.gov |
| KARAIKUDI | karaikudi@ctdtn.gov |
| KARUR EAST | karureast@ctdtn.gov |
| KARUR NORTH | karurnorth@ctdtn.gov |
| KARUR WEST | karurwest@ctdtn.gov |
| KILPAUK | kilpauk@ctdtn.gov |
| KODAIKANAL | kodaikanal@ctdtn.gov |
| KORATTUR | korattur@ctdtn.gov |
| KOYAMBEDU | koyambedu@ctdtn.gov |
| KRISHNAGIRI | krishnagiri@ctdtn.gov |
| KULITHALAI | kulithalai@ctdtn.gov |
| KUMBAKONAM - I | kumbakonam1@ctdtn.gov |
| KUMBAKONAM - IV | kumbakonam4@ctdtn.gov |
| KUMBAKONAM II | kumbakonam2@ctdtn.gov |
| KUMBAKONAM III | kumbakonam3@ctdtn.gov |
| LALGUDI | lalgudi@ctdtn.gov |
| LUZ | luz@ctdtn.gov |
| MADURAI RURAL SOUTH | madurairural@ctdtn.gov |
| MADURANTAGAM | madurantagam@ctdtn.gov |
| MAHAL | mahal@ctdtn.gov |

| Table.34 (contd.) | |
|---------------------|-----------------------------|
| Designation | e-mail Address |
| MAILADUTHURAI - II | mailaduthurai2@ctdtn.gov |
| MAILAM CHANDAI - I | mailamchandai1@ctdtn.gov |
| MAILAM CHANDAI - II | mailamchandai2@ctdtn.gov |
| MANDAVELI | mandaveli@ctdtn.gov |
| METTUPALAYAM RD | mettupalayamrd@ctdtn.gov |
| METTUPALAYAM TALUK | mettupalayam_tk. @ctdtn.gov |
| MUDUKULATHUR | mudukulathur@ctdtn.gov |
| MYLAPORE | mylapore@ctdtn.gov |
| NAMAKKAL TOWN | namakkaltown@ctdtn.gov |
| NANDANAM | nandanam@ctdtn.gov |
| NANGUNERI | nanguneri@ctdtn.gov |
| NETHAJI ROAD | nethajiroad_s@ctdtn.gov |
| NILAKOTTAI | nilakottai@ctdtn.gov |
| NUNGAMBAKKAM | nungambakkam@ctdtn.gov |
| OMALUR | omalur@ctdtn.gov |
| OORAIYUR | ooraiyur@ctdtn.gov |
| OPPANAKKARA STREET | oppanakkarast@ctdtn.gov |
| PALACODE | palacode@ctdtn.gov |
| PALAKKARAI - I | palakkarai1@ctdtn.gov |
| PALAKKARAI - II | palakkarai2@ctdtn.gov |
| PALANI - I | palani1@ctdtn.gov |
| PALANI - II | palani2 @ctdtn.gov |

| Table.34 (contd.) | |
|------------------------------|---------------------------------|
| Designation | e-mail Address |
| PANRUTI RURAL | panrutirural@ctdtn.gov |
| PANRUTI TOWN | panrutitown@ctdtn.gov |
| PAPANASAM | papanasam@ctdtn.gov |
| PARAMAKUDI | paramakudi@ctdtn.gov |
| PATTUKOTTAI - I | pattukottai1@ctdtn.gov |
| PATTUKOTTAI - II | pattukottai2@ctdtn.gov |
| PEDDUNAICKENPET NORTH | pnpet-n@ctdtn.gov |
| PEDDUNAICKENPET SOUTH | pnpet-s@ctdtn.gov |
| PEELAMEDU SOUTH | peelamedusouth@ctdtn.gov |
| PERAMBUR I | perambur1@ctdtn.gov |
| PERAMBUR II | perambur2@ctdtn.gov |
| PERIAKULAM | periakulam@ctdtn.gov |
| PODANUR | podanur@ctdtn.gov |
| POLLACHI EAST | pollachieast@ctdtn.gov |
| POLUR | polur@ctdtn.gov |
| PONNERI | ponneri@ctdtn.gov |
| PORUR | porur@ctdtn.gov |
| PUDUKOTTAI - I | pudukottai1@ctdtn.gov |
| PUDUKOTTAI - II | pudukottai2@ctdtn.gov |
| PURASAWAKKAM | purasawakkam@ctdtn.gov |
| R S PURAM (EAST) | rspurameast@ctdtn.gov |
| RAM NAGAR | ramnagar@ctdtn.gov |

Table.34 (contd.)

| Designation | e-mail Address |
|---------------------|---------------------------|
| RAMANATHAPURAM | ramanathapuram@ctdtn.gov |
| RASIPURAM | rasipuram@ctdtn.gov |
| ROCKFORT | rockfort@ctdtn.gov |
| ROYAPETTAH I | royapettah1@ctdtn.gov |
| ROYAPETTAH II | royapettah2@ctdtn.gov |
| ROYAPURAM | royapuram@ctdtn.gov |
| SAIDAPET | saidapet@ctdtn.gov |
| SALIGRAMAM | saligramam@ctdtn.gov |
| SINGANALLUR | singanallur@ctdtn.gov |
| SINGARATHOPE | singarathope@ctdtn.gov |
| SIRGALI | sirgali@ctdtn.gov |
| SIVAGANGAI | sivagangai@ctdtn.gov |
| SRIPERUMBUDUR | sriperumbudur@ctdtn.gov |
| SRIRANGAM | srirangam@ctdtn.gov |
| TAMBARAM I | tambaram1@ctdtn.gov |
| TAMBARAM II | tambaram2@ctdtn.gov |
| THANJAVUR - II | thanjavur2. @ctdtn.gov |
| THENI I | theni1@ctdtn.gov |
| THENI II(ANDIPATTI) | theni2@ctdtn.gov |
| THIRUMANGALAM | thirumangalam@ctdtn.gov |
| THIRUPARANKUNDRAM | tiruparakundram@ctdtn.gov |
| THIRUTHURAIPOONDI | tiruturaipoondi@ctdtn.gov |

| Table.34 (contd.) | |
|-----------------------|---------------------------|
| Designation | e-mail Address |
| TINDIVANAM | tindivanam@ctdtn.gov |
| TIRUCHENGODU NAGAR | tiruchengod_ngr@ctdtn.gov |
| TIRUCHENGODU RURAL | tiruchengod_rrl@ctdtn.gov |
| TIRUKOILUR | tirukoilur@ctdtn.gov |
| TIRUPATHUR | tirupathur@ctdtn.gov |
| TIRUPPUR (NORTH) | tirupurnorth@ctdtn.gov |
| TIRUPPUR (SOUTH) | tirupursouth@ctdtn.gov |
| TIRUPPUR CENTRAL - II | tirupurcentral2@ctdtn.gov |
| TIRUPPUR KONGU NAGAR | tirupurkongngr@ctdtn.gov |
| TIRUPPUR RURAL | tiruppurrural@ctdtn.gov |
| TIRUTTANI | tiruttani@ctdtn.gov |
| TIRUVELLORE | tiruvellore@ctdtn.gov |
| TIRUVERUMBUR | tiruverumbur. @ctdtn.gov |
| TIRUVOTTIYUR | tiruvottiyur@ctdtn.gov |
| TNAGAR EAST | tnagareast@ctdtn.gov |
| TNAGAR NORTH | tnagarnorth@ctdtn.gov |
| TNAGAR SOUTH | tnagarsouth@ctdtn.gov |
| UDUMALPET (SOUTH) | udumalpetsouth@ctdtn.gov |
| UDUMALPET NORTH | udumalpetnorth@ctdtn.gov |
| UTHAGAI NORTH | uthagainorth@ctdtn.gov |
| UTHAMAPALAYAM | uthamapalayam@ctdtn.gov |
| VADAPALANI I | vadapalani1@ctdtn.gov |

| Table.34 (contd.) | |
|--------------------------|---------------------------------|
| Designation | e-mail Address |
| VADAPALANI II | vadapalani2@ctdtn.gov |
| VALLALAR NAGAR | vallalarnagar@ctdtn.gov |
| VALLUVARKOTTAM | valluvarkottam@ctdtn.gov |
| VALPARAI | valparai@ctdtn.gov |
| VANDEVASI | vandavasi@ctdtn.gov |
| VANIYAMBADI | vaniyambadi@ctdtn.gov |
| VELACHERRY | velacherry@ctdtn.gov |
| VELANDIPALAYAM | velandipalayam@ctdtn.gov |
| VELLORE NORTH | vellorenorth@ctdtn.gov |
| VELLORE RURAL | vellorerural@ctdtn.gov |
| VELLORE SOUTH | velloresouth@ctdtn.gov |
| VILLUPURAM I | villupuram1@ctdtn.gov |
| VILLUPURAM II | villupuram2. @ctdtn.gov |
| VIRUDHACHALAM | virudhachalam@ctdtn.gov |
| WASHERMENPET I | washermenpet1@ctdtn.gov |
| WASHERMENPET II | washermenpet2@ctdtn.gov |
| WEST VELI STREET | westvelistreet@ctdtn.gov |
| TRAINING | |
| DIRECTOR, CTSTI | director_tc@ctdtn.gov |

| Table.34 (contd.) | |
|--------------------------------|----------------------------------|
| Designation | e-mail Address |
| PROGRAMMERS | |
| PROGRAMMER(SOFTWARE) | prg-software@ctdtn.gov |
| PROGRAMMER(MAINTENANCE) | prg-maintenance@ctdtn.gov |
| PROGRAMMER(NETWORK) | prg-network@ctdtn.gov |
| PROGRAMMER(GENERAL) | prg-general@ctdtn.gov |
| AP CHENNAI CENTRAL | apchnc@ctdtn.gov |
| AP CHENNAI EAST | apchne@ctdtn.gov |
| AP CHENNAI NORTH | apchnn@ctdtn.gov |
| AP CHENNAI SOUTH | apchns@ctdtn.gov |
| AP CHEPAUK | apchepauk@ctdtn.gov |
| AP(MAINTENANCE) | apmaintenance@ctdtn.gov |
| AP(GENERAL) | apgeneral@ctdtn.gov |
| AP(SOFTWARE) | apsoftware@ctdtn.gov |
| AP(NETWORK) | apnetwork@ctdtn.gov |
| AP COIMBATORE | apcbe@ctdtn.gov |
| AP COIMBATORE TRAINING | aptcbe@ctdtn.gov |
| AP MADURAI | apmdu@ctdtn.gov |
| AP MADURAI TRAINING | aptmdu@ctdtn.gov |
| AP SALEM | apslm@ctdtn.gov |
| AP TIRUNELVELI | aptvl@ctdtn.gov |
| AP TRICHY | aptry@ctdtn.gov |
| AP VELLORE | apvlr@ctdtn.gov |